



 **CONFETTI**

Ceramica
VOGUE

Ceramica
VOGUE

TILES FOR ARCHITECTURE

CONFETTI

Confetti é la nuova collezione di ceramiche in grés smaltato disegnata dallo studio Marcante-Testa (UdA) per Ceramica Vogue. Un progetto caratterizzato da patterns di ispirazione grafica evocativi di un passato prossimo capace di custodire gli aspetti più intimi delle persone e della loro memoria.

Immaginato per la casa e per quegli interni extra residenziali come locali di ristorazione e alberghi che richiamano la dimensione domestica, in quanto luogo di espressione per eccellenza di quei lati indispensabili del carattere umano quali l'umorismo, la leggerezza e la capacità di non prendersi mai troppo sul serio.

La collezione Confetti prevede un unico formato 25x25 cm rettificato, spessore 10 mm, con quattro decori suggeriti nei nomi dall'architettura di quattro città italiane : Milano, Venezia, Roma e Torino.

I micro patterns, declinati in 6 varianti di colori più 8 tinte piene in abbinamento, rendono la collezione Confetti un nuovo classico, per rivestimento e pavimento, disegnato e prodotto in Italia in continuità con la filosofia di Ceramica Vogue.

Confetti is the new collection of glazed stoneware tiles designed by the Marcante-Testa (UdA) firm for Ceramica Vogue. This project is characterised by patterns of graphic inspiration evocative of a near past that can protect the most intimate aspects of people and their memories.

The collection is designed for the home and for non-residential interiors such as restaurants and hotels, which bring to mind the dimension of home because they are the best expression of essential traits of the human character, such as humour, lightness and the ability to not take oneself too seriously.

The Confetti collection comes in one format (25x25 cm, rectified, 10 mm thickness) with four types of decorations suggested by the names of the architecture in four Italian cities: Milano, Venezia, Roma and Torino.

The micro patterns, available in 6 colours with an additional 8 matching solid colours, make the Confetti collection a new classic for tiling floors and walls, designed and produced in Italy coherently with the philosophy of Ceramica Vogue.



STUDIO MARCANTE - TESTA

Nel 2014 Andrea Marcante (co-fondatore nel 1992 dello studio di architettura UdA) crea con Adelaide Testa lo studio MARCANTE – TESTA, una realtà progettuale indirizzata alla ricerca sull'architettura degli interni, sul design e alla consulenza aziendale nel settore dei materiali e dell'arredamento. I loro progetti vogliono essere al tempo stesso seri e divertenti, rustici e cosmopoliti, democratici e raffinati, pratici ed eleganti, mascholini e delicati: se certi interni ci emozionano è perché sono esemplificazioni di una possibile scelta tra aspetti conflittuali del nostro carattere, della legittima aspirazione a trasformare le nostre preoccupanti contraddizioni in qualcosa di bello.

Dal novembre 2016 sono i nuovi direttori artistici di Ceramica Vogue con l'intento di valorizzarne la sua vocazione architettonica e farne a tutti gli effetti un prodotto per l'interior design. Un preciso percorso condiviso con l'azienda che sta, da una parte, attualizzando i caratteri distintivi del brand, che sono il colore e i formati, e dall'altra introducendo un'originale connotazione stilistica attraverso nuove collezioni come "Graph" e "Confetti".

In 2014 Andrea Marcante, co-founder of UdA architecture firm in 1992, set up with Adelaide Testa MARCANTE-TESTA, a research oriented firm focusing on architecture, design and company consulting in the field of materials and furniture.

Their projects aim to be both serious and funny, rustic and cosmopolitan, democratic and refined, practical and elegant, manly and delicate: if certain interiors excite us, it is because they are examples of possible choices between conflicting aspects of our personality, of the legitimate aspiration to transform our own disturbing contradictions into something beautiful.

From November 2016 they are the new artistic directors of Ceramica Vogue, with the aim of enhancing its architectural vocation and making it a specific product for interior design. A precise path shared with the company, which is both updating the distinctive features of the brand, colors and sizes, and introducing an original stylistic connotation through new collections such as "Graph" and "Confetti".









Rivestimento/Wall:
MI 230 MB 25x25x1 cm

Giunto/Joint
MAPEI 130 Jasmine









Rivestimento/Wall:
RM 233 B 25x25x1 cm
PR 007 0,3x270x1 cm

Giunto/Joint
MAPEI 170 Crocus Blue









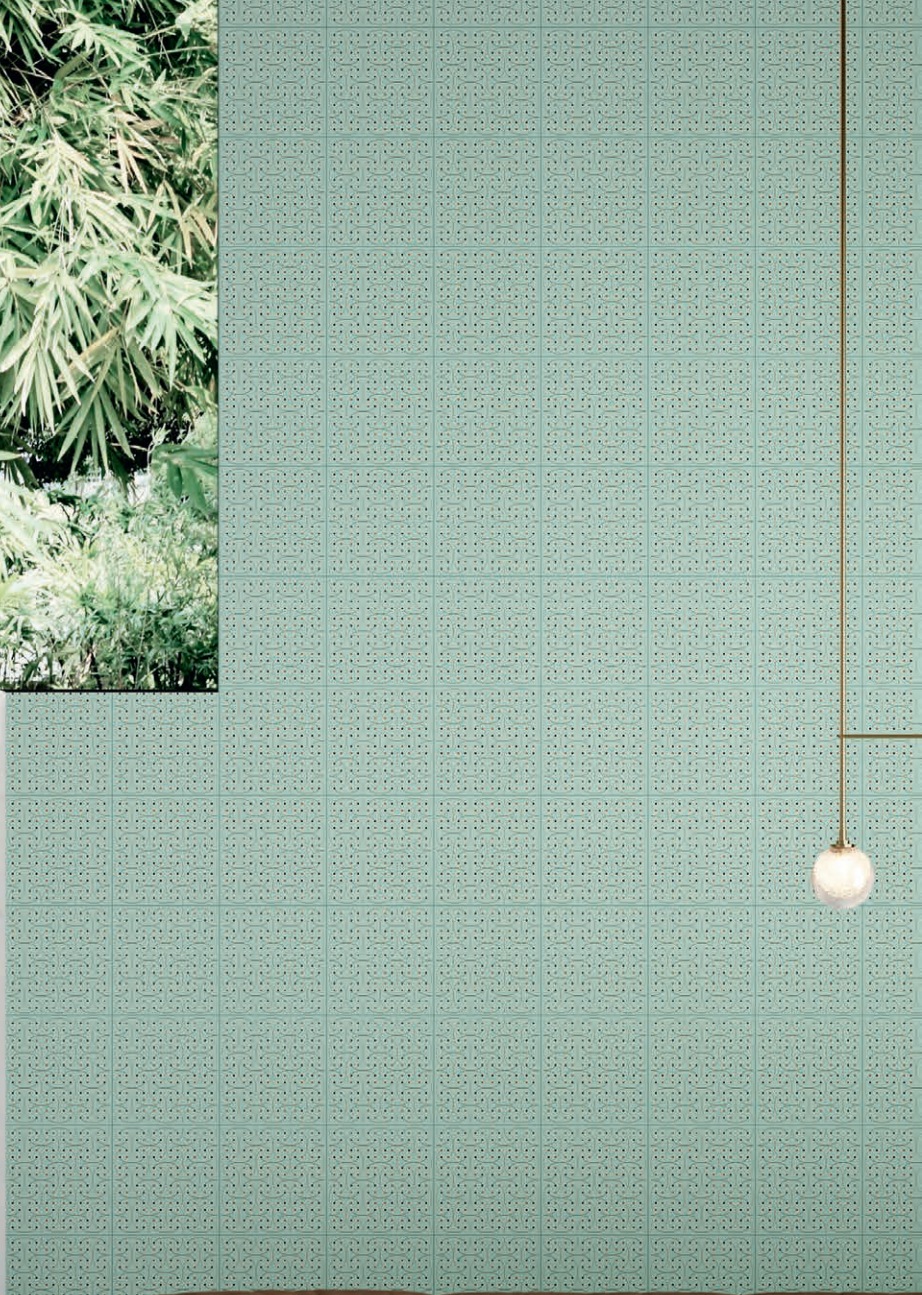
Pavimento/Floor:
TO 203 OM 25x25x1 cm

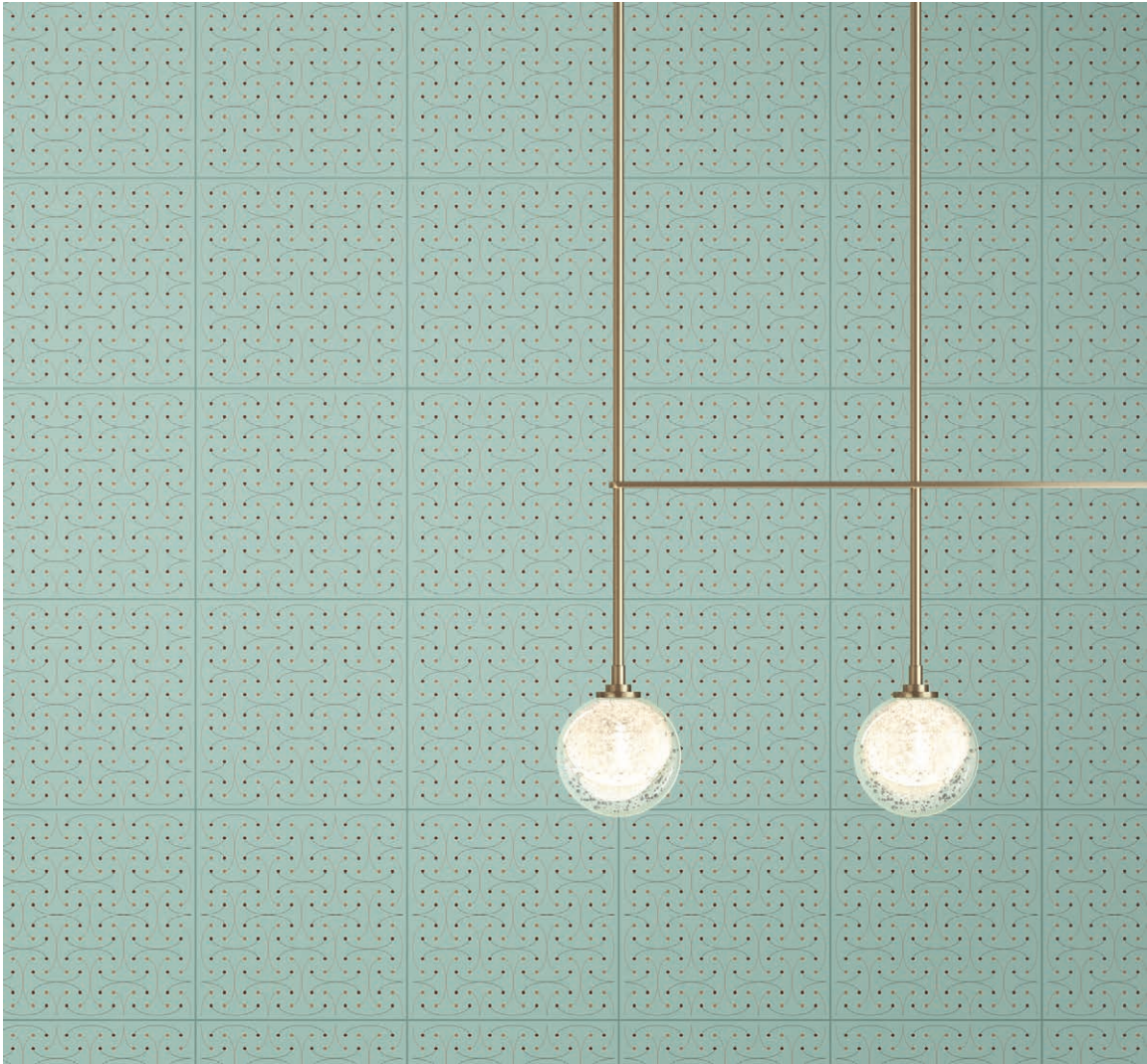
Rivestimento/Wall:
TO 203 OM 25x25x1 cm

Giunto/Joint
MAPEI 100 White









Rivestimento/Wall:
VE 232 OM 25x25x1 cm

Giunto/Joint
MAPEI 115 River Grey









Rivestimento/Wall:
TO 233 MO 25x25x1 cm

Giunto/Joint
MAPEI 170 Crocus Blue









Pavimento/Floor:
RM 201 M 25x25x1 cm

Rivestimento/Wall:
RM 201 M 25x25x1 cm

Giunto/Joint
MAPEI 115 River Grey







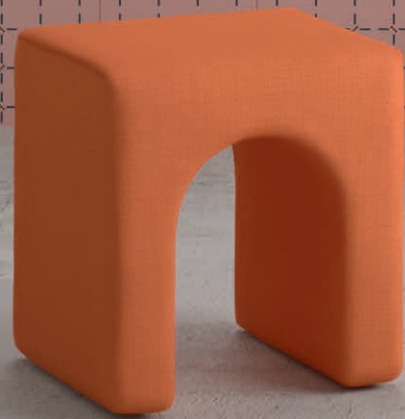
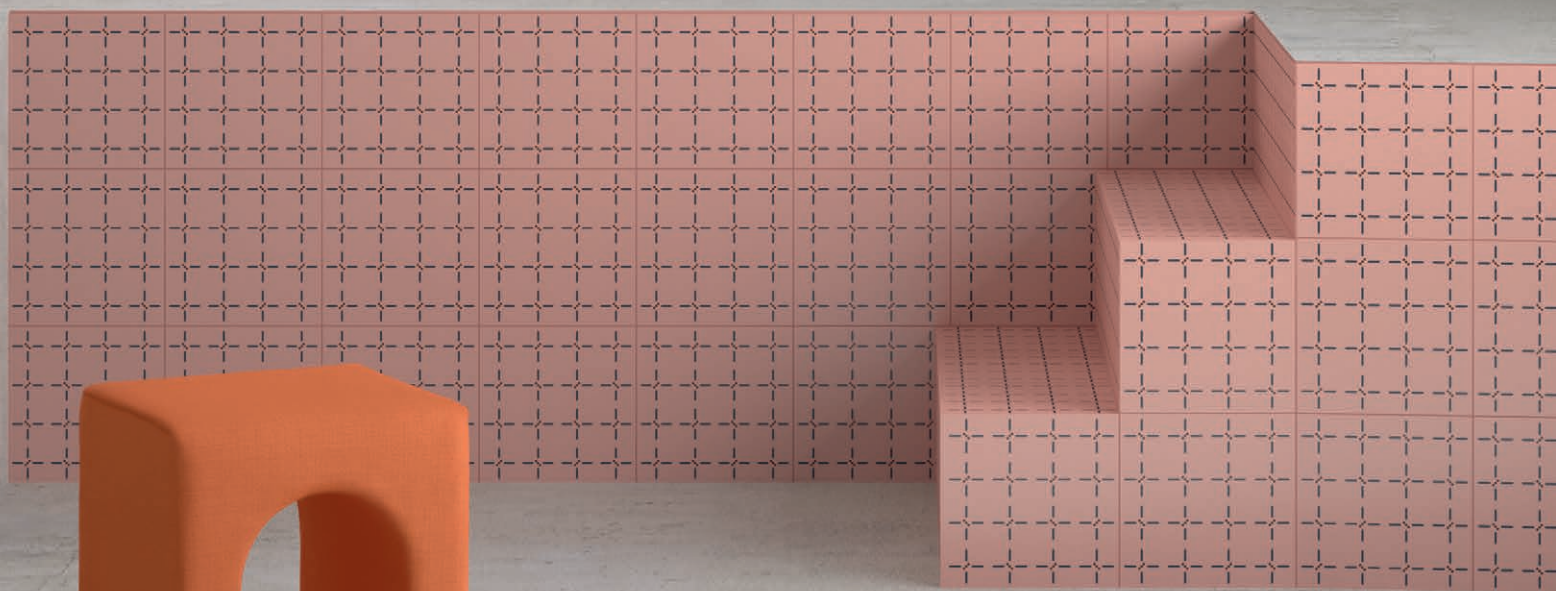
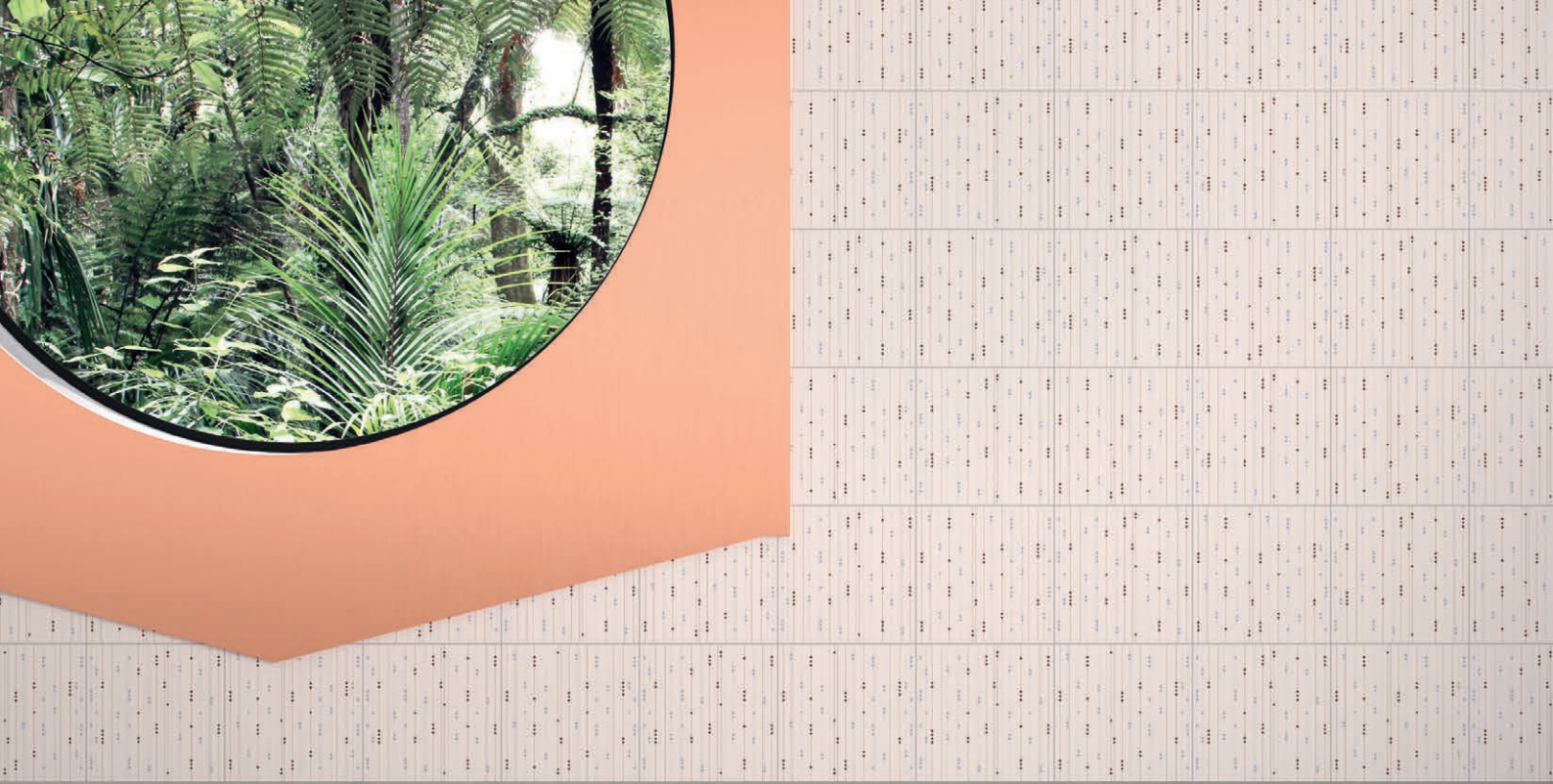


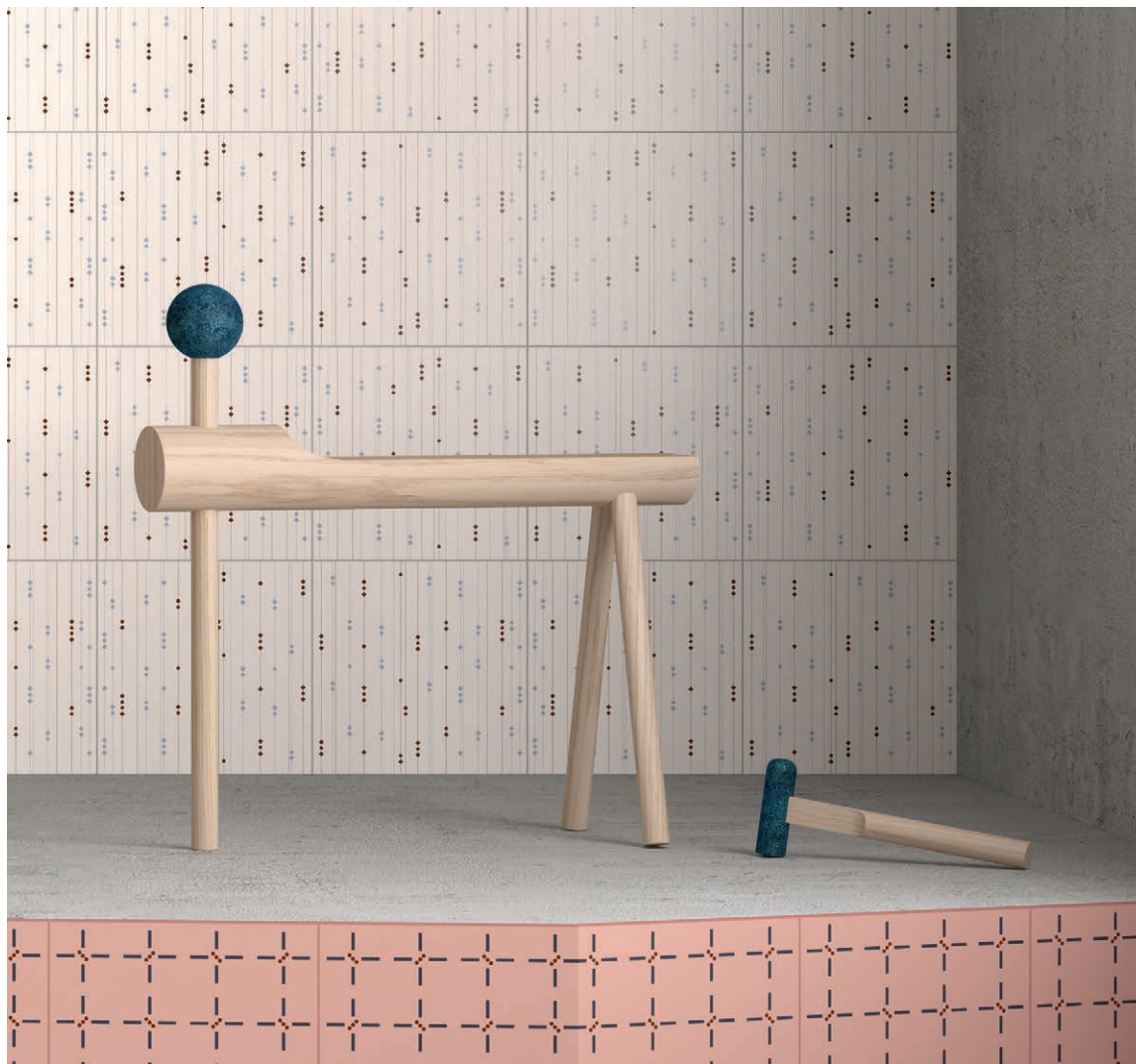
Rivestimento/Wall:
VE 213 AB 25x25x1 cm

Giunto/Joint
MAPEI 137 Caribbean





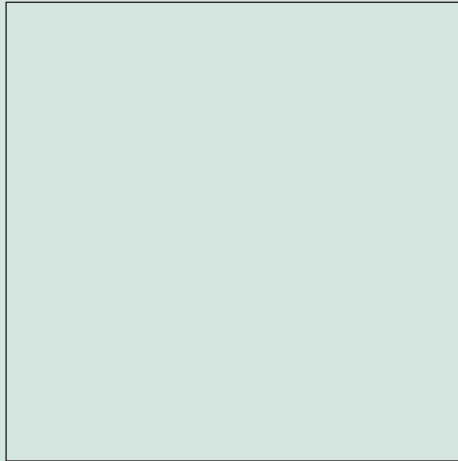




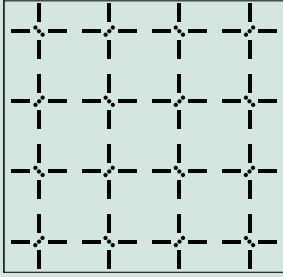
Rivestimento/Wall:
MI 203 MB 25x25x1 cm
TO 231 BM 25x25x1 cm

Giunto/Joint
MAPEI 100 White
MAPEI 132 Beige 2000

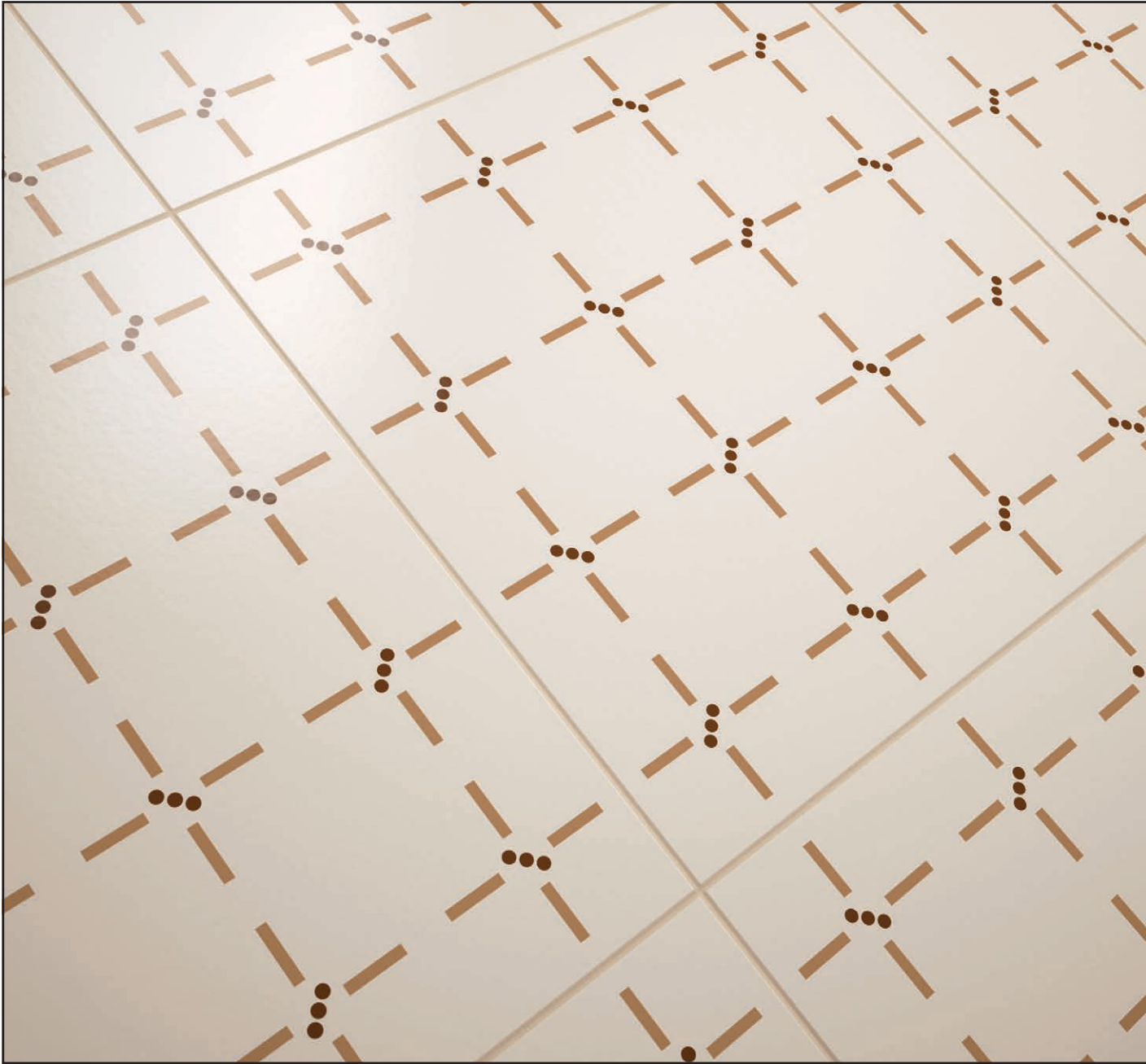
25x25x1 cm
10"x10" x²⁵/₆₄"



Rettificato - Rectified



CONFETTI
TORINO

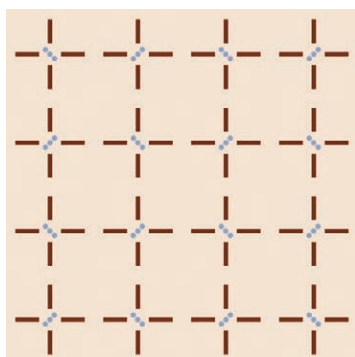


CONFETTI

TORINO

R9 / DCOF>0,42

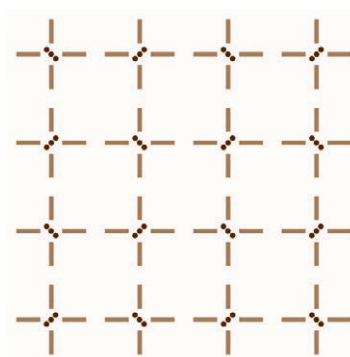
COLORI - COLORS



TO 213 MA

PEI IV

25x25x1 cm - 10"x10" x²⁵/₆₄"



TO 203 OM

PEI IV

25x25x1 cm - 10"x10" x²⁵/₆₄"

GIUNTI - JOINTS SUGGESTION

MAPEI 137 Caribbean

MAPEI 142 Brown

MAPEI 100 White

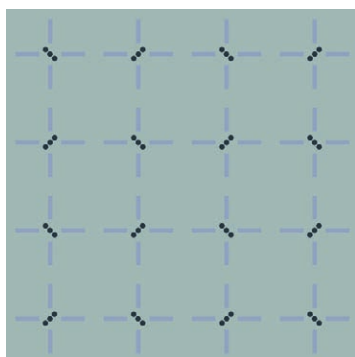
MAPEI 142 Brown

CONFETTI

TORINO

R9 / DCOF>0,42

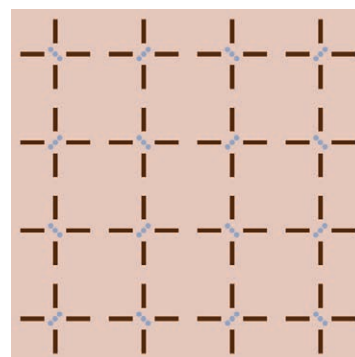
COLORI - COLORS



TO 232 AB

PEI IV

25x25x1 cm - 10"x10" x²⁵/₆₄"



TO 230 MA

PEI IV

25x25x1 cm - 10"x10" x²⁵/₆₄"

GIUNTI - JOINTS SUGGESTION



MAPEI 115 River Grey



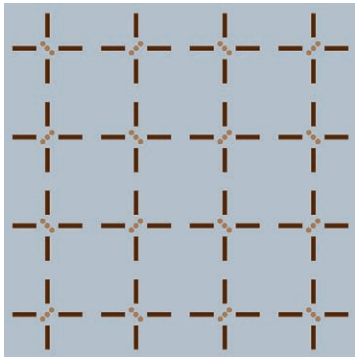
MAPEI 142 Brown



MAPEI 130 Jasmine



MAPEI 132 Beige 2000



TO 233 MO PEI IV

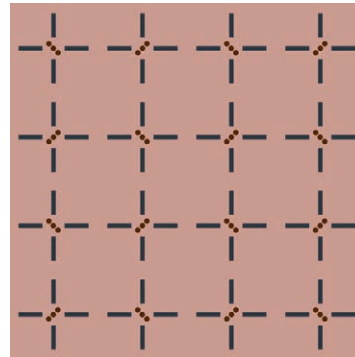
25x25x1 cm - 10"x10" x²⁵/₆₄"



MAPEI 170 Crocus Blue



MAPEI 142 Brown

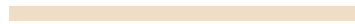


TO 231 BM PEI IV

25x25x1 cm - 10"x10" x²⁵/₆₄"

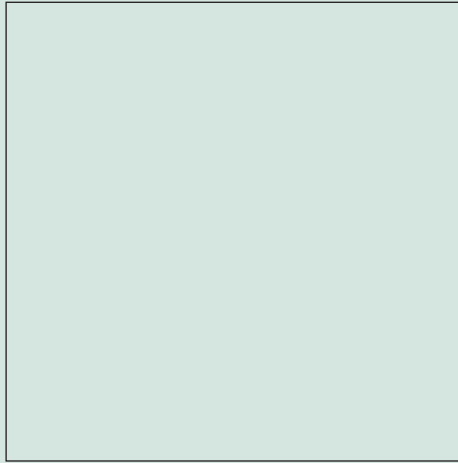


MAPEI 132 Beige 2000

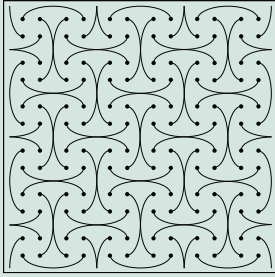


MAPEI 130 Jasmine

25x25x1 cm
10"x10" x²⁵/₆₄"



Rettificato - Rectified



CONFETTI
VENEZIA

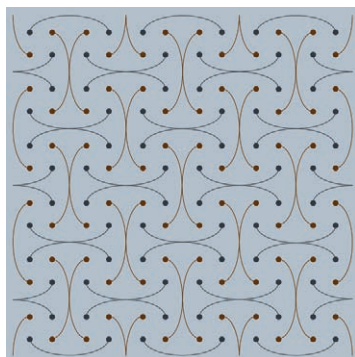


CONFETTI

VENEZIA

R9 / DCOF>0,42

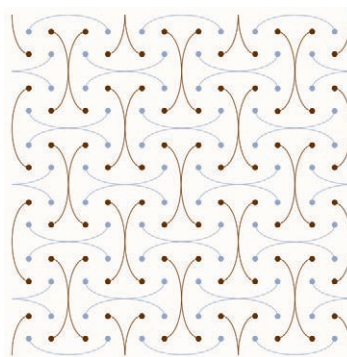
COLORI - COLORS



VE 233 MB

PEI IV

25x25x1 cm - 10"x10" x²⁵/₆₄"



VE 203 MA

PEI IV

25x25x1 cm - 10"x10" x²⁵/₆₄"

GIUNTI - JOINTS SUGGESTION

MAPEI 170 Crocus Blue

MAPEI 142 Brown

MAPEI 100 White

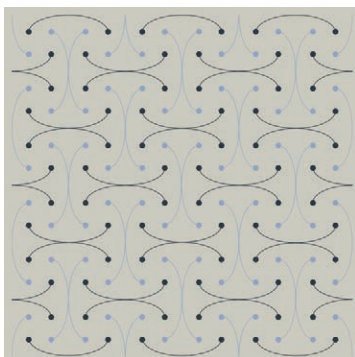
MAPEI 170 Crocus Blue

CONFETTI

VENEZIA

R9 / DCOF>0,42

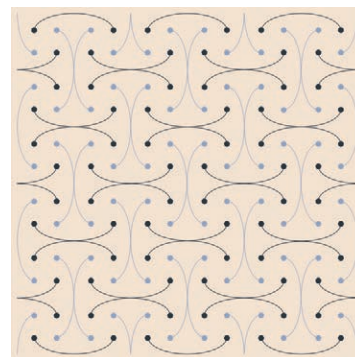
COLORI - COLORS



VE 209 AB

PEI IV

25x25x1 cm - 10"x10" x²⁵/₆₄"



VE 213 AB

PEI IV

25x25x1 cm - 10"x10" x²⁵/₆₄"

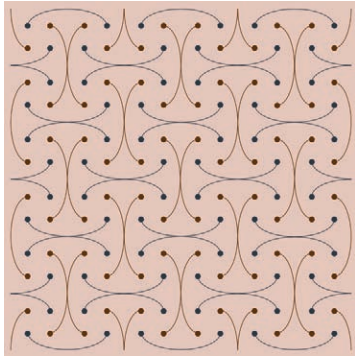
GIUNTI - JOINTS SUGGESTION

MAPEI 137 Caribbean

MAPEI 170 Crocus Blue

MAPEI 137 Caribbean

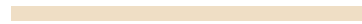
MAPEI 142 Brown



VE 230 MB

PEI IV

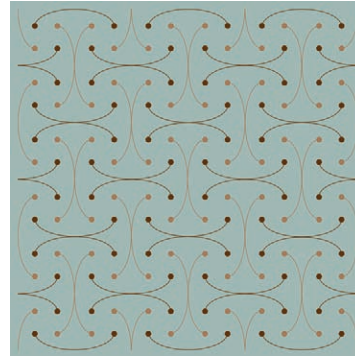
25x25x1 cm - 10"x10" x²⁵/₆₄"



MAPEI 130 Jasmine



MAPEI 132 Beige 2000



VE 232 OM

PEI IV

25x25x1 cm - 10"x10" x²⁵/₆₄"

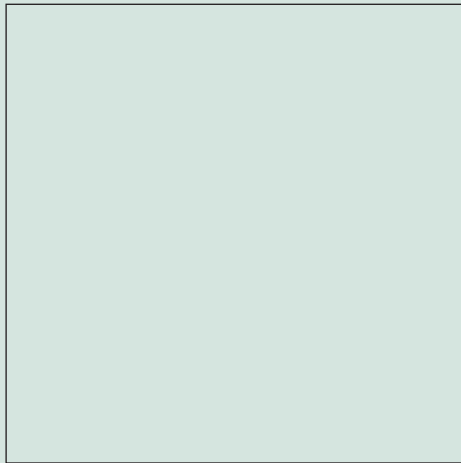


MAPEI 115 River Grey

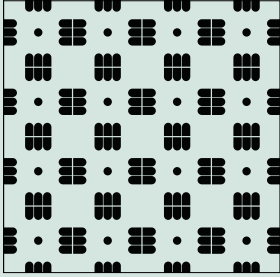


MAPEI 142 Brown

25x25x1 cm
10"x10" x²⁵/₆₄"



Rettificato - Rectified

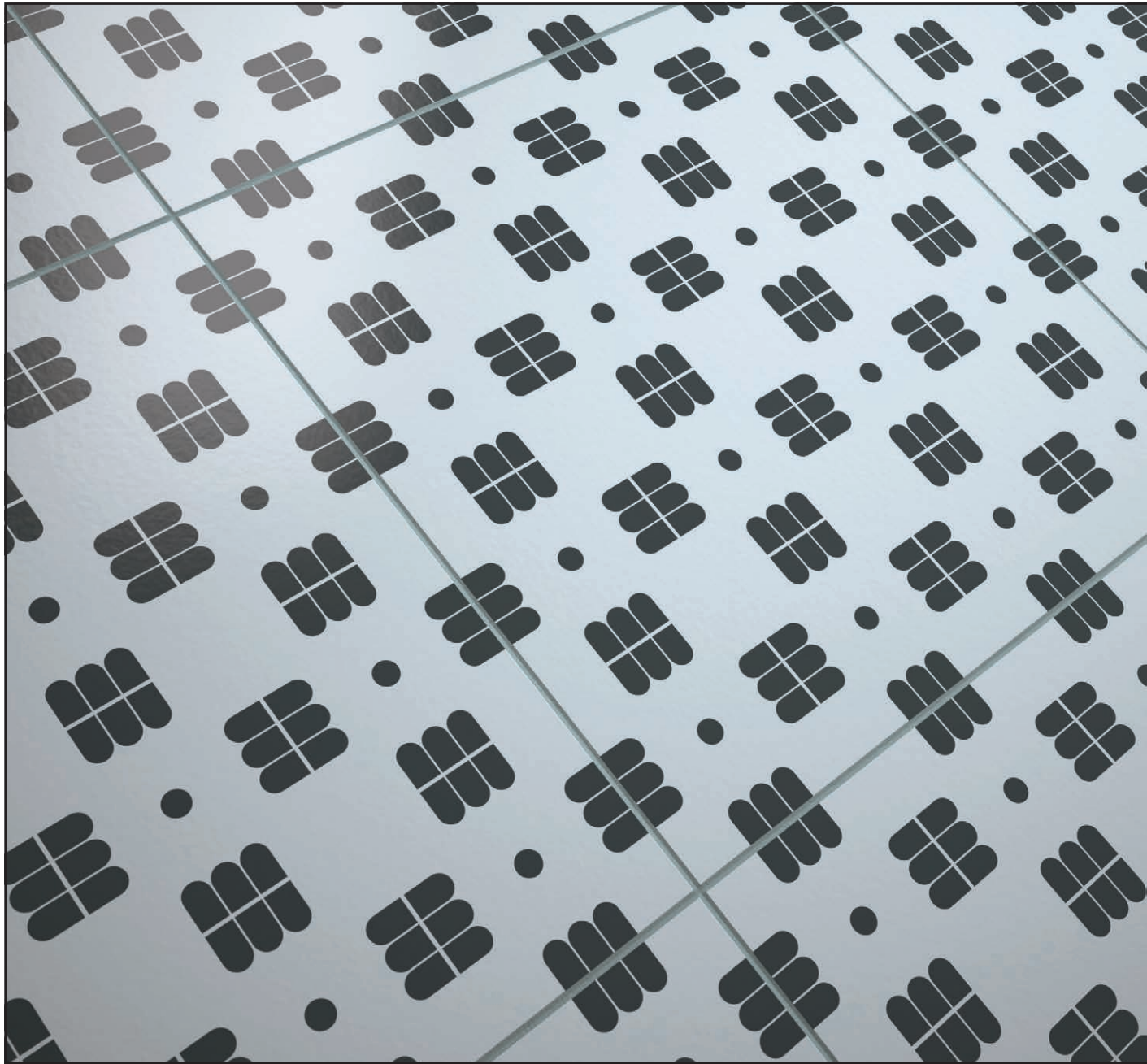


CONFETTI

ROMA

Per la particolare tipologia del prodotto non possiamo garantire il perfetto allineamento dei decori.
L'effetto estetico dell'insieme risulta comunque gradevole

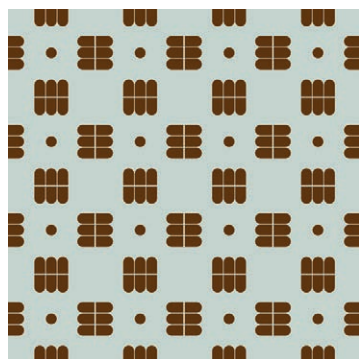
Given the type of product, we cannot guarantee absolute decoration alignment.
In any case, on completing installation, the overall effect is pleasing to the eye.



CONFETTI

ROMA
R9 / DCOF>0,42

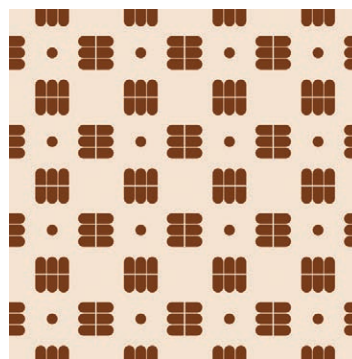
COLORI - COLORS



RM 201 M

PEI IV

25x25x1 cm - 10"x10" x²⁵/₆₄"



RM 213 M

PEI IV

25x25x1 cm - 10"x10" x²⁵/₆₄"

GIUNTI - JOINTS SUGGESTION

MAPEI 115 River Grey

MAPEI 142 Brown

MAPEI 137 Caribbean

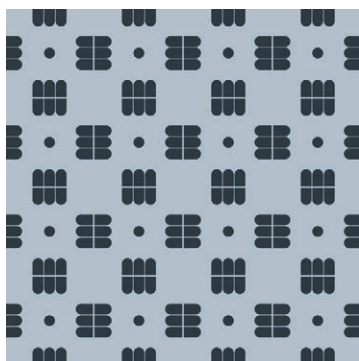
MAPEI 142 Brown

CONFETTI

ROMA

R9 / DCOF>0,42

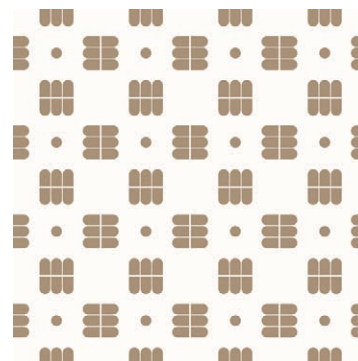
COLORI - COLORS



RM 233 B

PEI IV

25x25x1 cm - 10"x10" x²⁵/₆₄"



RM 203 O

PEI IV

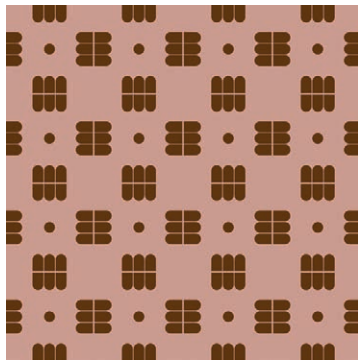
25x25x1 cm - 10"x10" x²⁵/₆₄"

GIUNTI - JOINTS SUGGESTION

MAPEI 170 Crocus Blue

MAPEI 100 White

MAPEI 142 Brown



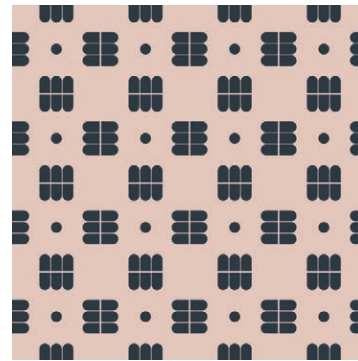
RM 231 M

PEI IV

25x25x1 cm - 10"x10" x²⁵/₆₄"

MAPEI 132 Beige 2000

MAPEI 130 Jasmine



RM 230 B

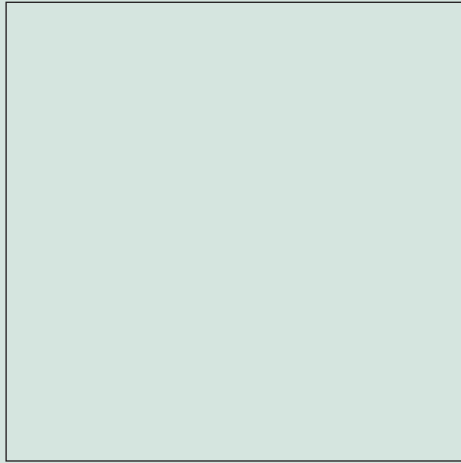
PEI IV

25x25x1 cm - 10"x10" x²⁵/₆₄"

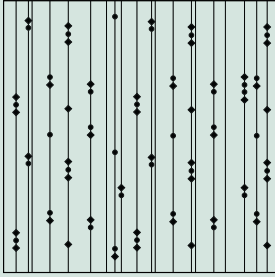
MAPEI 130 Jasmine

MAPEI 132 Beige 2000

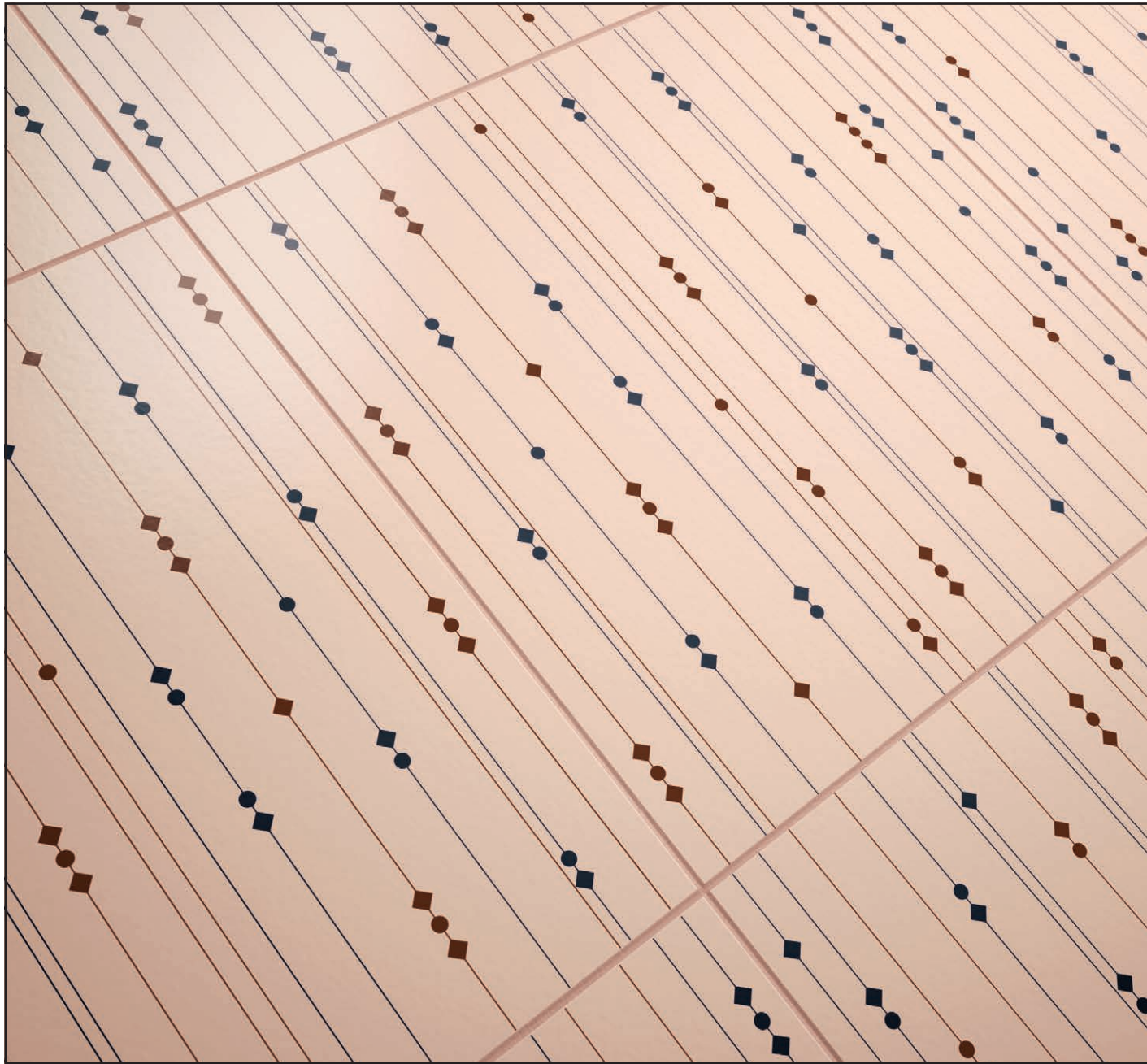
25x25x1 cm
10"x10" x²⁵/₆₄"



Rettificato - Rectified



CONFETTI
MILANO

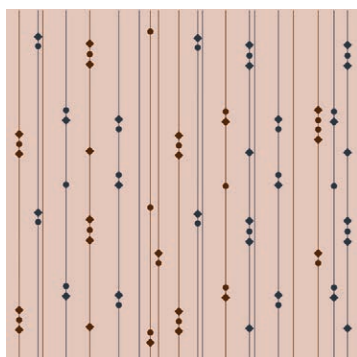


CONFETTI

MILANO

R9 / DCOF>0,42

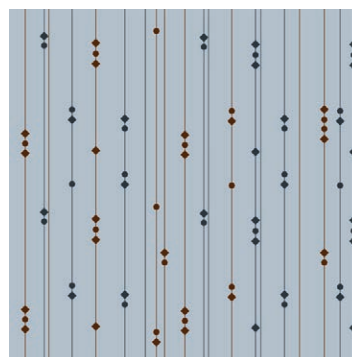
COLORI - COLORS



MI 230 MB

PEI IV

25x25x1 cm - 10"x10" x²⁵/₆₄"



MI 233 MB

PEI IV

25x25x1 cm - 10"x10" x²⁵/₆₄"

GIUNTI - JOINTS SUGGESTION



MAPEI 130 Jasmine



MAPEI 132 Beige 2000



MAPEI 170 Crocus Blue



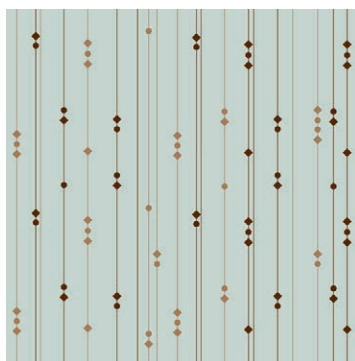
MAPEI 142 Brown

CONFETTI

MILANO

R9 / DCOF>0,42

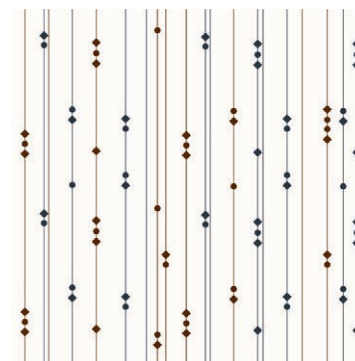
COLORI - COLORS



MI 201 OM

PEI IV

25x25x1 cm - 10"x10" x²⁵/₆₄"



MI 203 MB

PEI IV

25x25x1 cm - 10"x10" x²⁵/₆₄"

GIUNTI - JOINTS SUGGESTION



MAPEI 115 River Grey

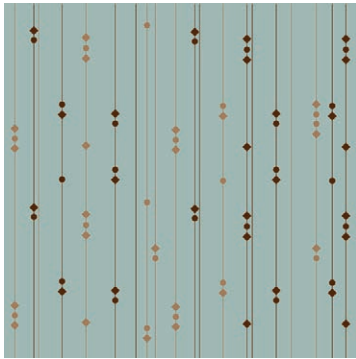


MAPEI 142 Brown

MAPEI 100 White



MAPEI 170 Crocus Blue



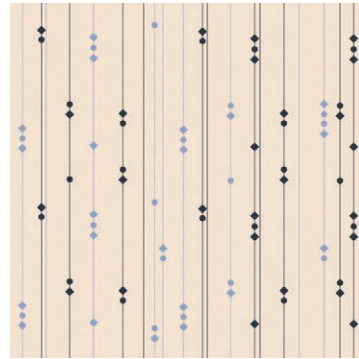
MI 232 OM

PEI IV

25x25x1 cm - 10"x10" x²⁵/₆₄"

MAPEI 115 River Grey

MAPEI 142 Brown



MI 213 AB

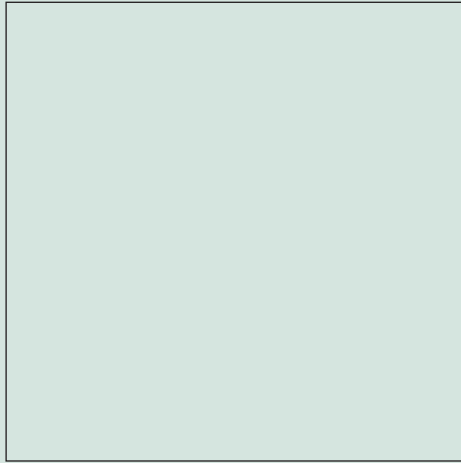
PEI IV

25x25x1 cm - 10"x10" x²⁵/₆₄"

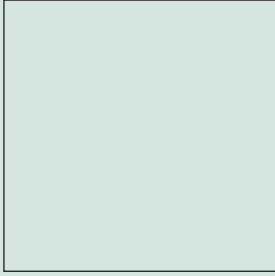
MAPEI 137 Caribbean

MAPEI 142 Brown

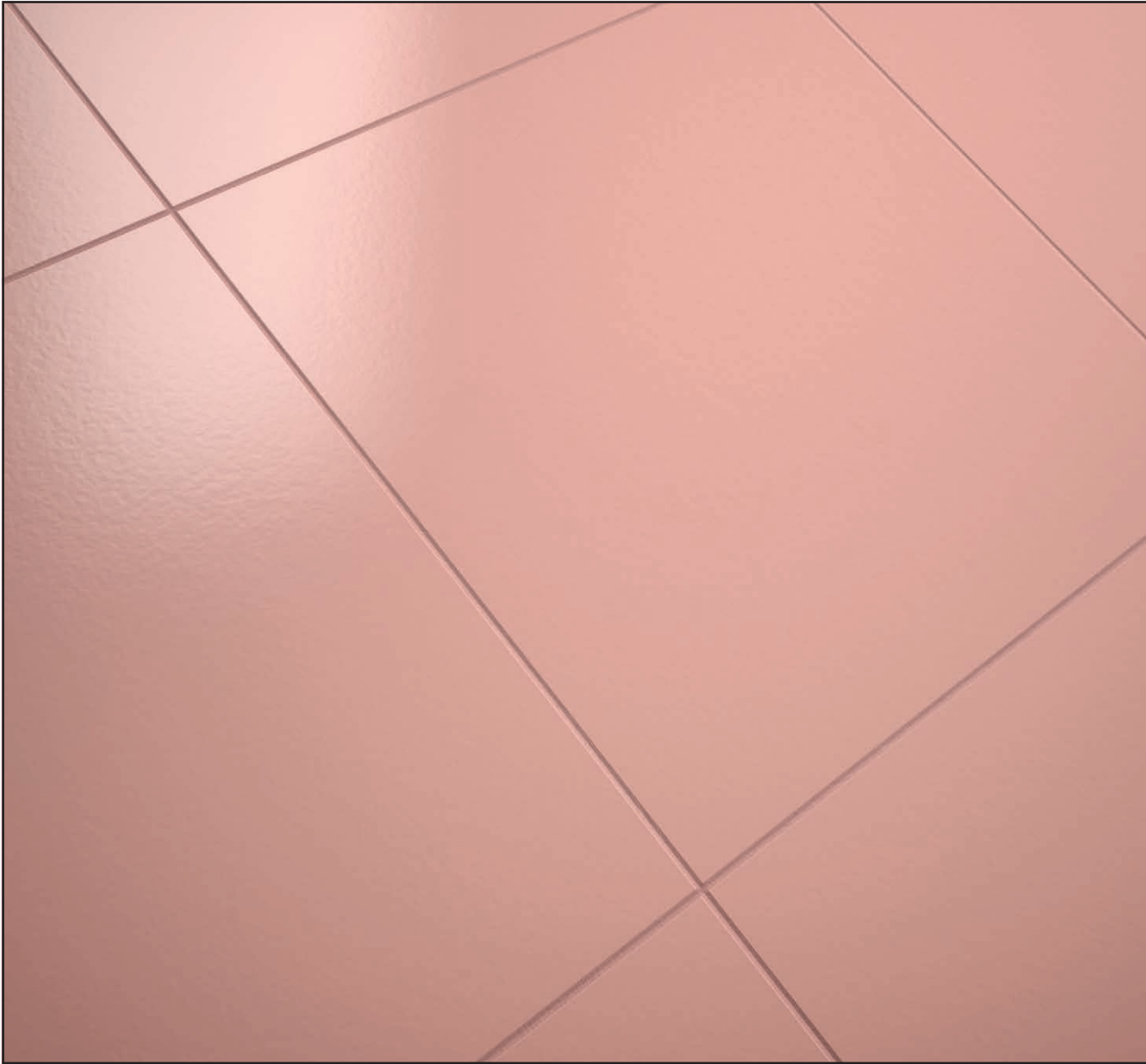
25x25x1 cm
10"x10" x²⁵/₆₄"



Rettificato - Rectified



CONFETTI
FONDI

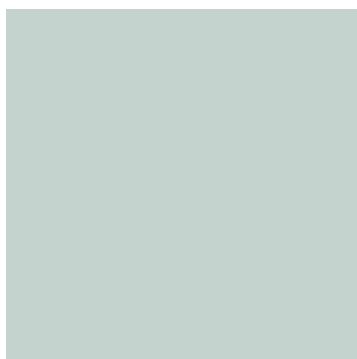


CONFETTI

FONDI

R9 / DCOF>0,42

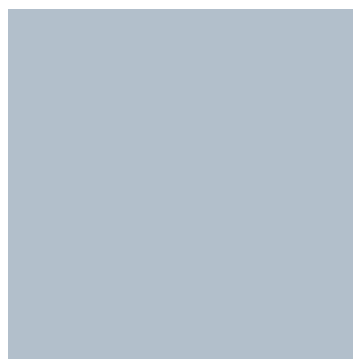
COLORI - COLORS



FG 201

PEI IV

25x25x1 cm - 10"x10" x²⁵/₆₄"



FG 233

PEI IV

25x25x1 cm - 10"x10" x²⁵/₆₄"

GIUNTI - JOINTS SUGGESTION



MAPEI 115 River Grey



MAPEI 170 Crocus Blue

CONFETTI

FONDI

R9 / DCOF>0,42

COLORI - COLORS



FG 232

PEI IV

25x25x1 cm - 10"x10" x²⁵/₆₄"



FG 231

PEI IV

25x25x1 cm - 10"x10" x²⁵/₆₄"

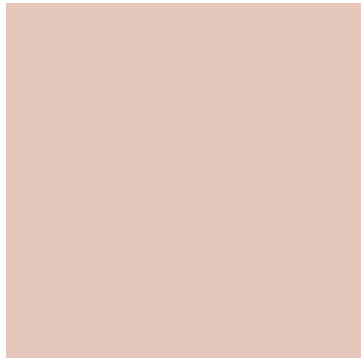
GIUNTI - JOINTS SUGGESTION



MAPEI 115 River Grey



MAPEI 132 Beige 2000



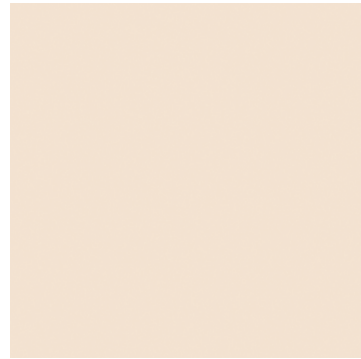
FG 230

PEI IV

25x25x1 cm - 10"x10" x²⁵/₆₄"



MAPEI 130 Jasmine



FG 213

PEI IV

25x25x1 cm - 10"x10" x²⁵/₆₄"



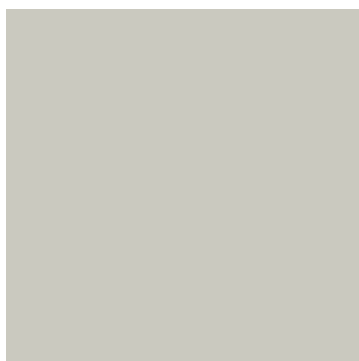
MAPEI 137 Caribbean

CONFETTI

FONDI

R9 / DCOF>0,42

COLORI - COLORS



FG 209

PEI IV

25x25x1 cm - 10"x10" x²⁵/₆₄"



FG 203

PEI IV

25x25x1 cm - 10"x10" x²⁵/₆₄"

GIUNTI - JOINTS SUGGESTION

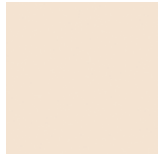


MAPEI 137 Caribbean

MAPEI 100 White



FG 203



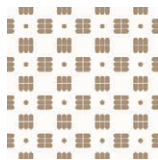
FG 213



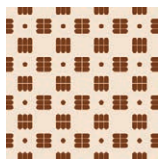
FG 233



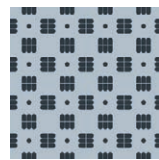
FG 232



RM 203 O



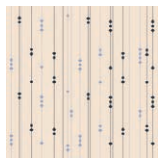
RM 213 M



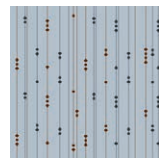
RM 233 B



MI 203 MB



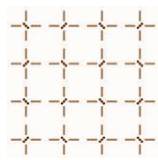
MI 213 AB



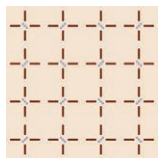
MI 233 MB



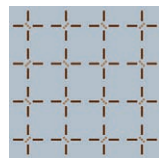
MI 232 OM



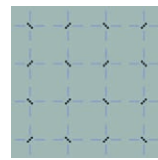
TO 203 OM



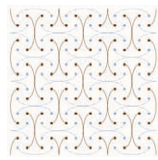
TO 213 MA



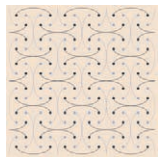
TO 233 MO



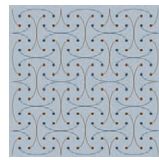
TO 232 AB



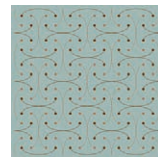
VE 203 MA



VE 213 AB



VE 233 MB



VE 232 OM

TABELLA SINOTTICA

SYNOPTIC TABLE



FG 201



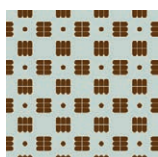
FG 209



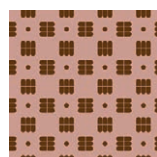
FG 231



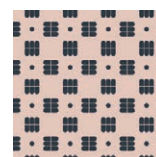
FG 230



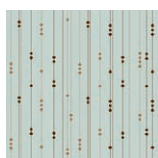
RM 201 M



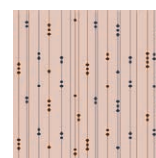
RM 231 M



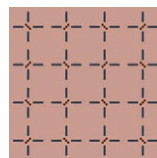
RM 230 B



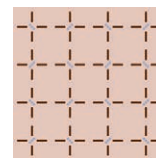
MI 201 OM



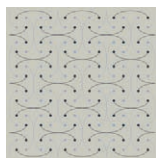
MI 230 MB



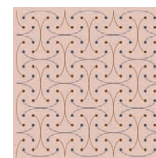
TO 231 BM



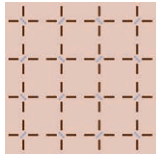
TO 230 MA



VE 209 AB



VE 230 MB



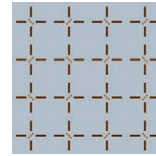
TO 230 MA



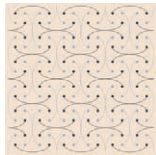
FG 233



MI 203 MB



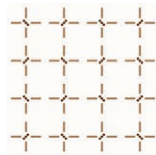
TO 233 MO



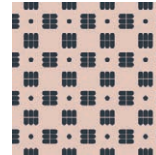
VE 213 AB



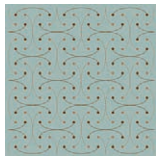
FG 232



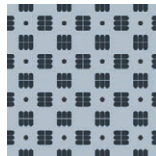
TO 203 OM



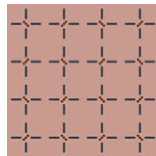
RM 230 B



VE 232 OM



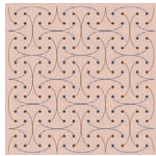
RM 233 B



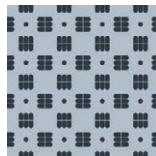
TO 231 BM



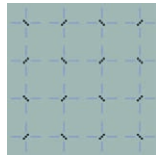
FG 230



VE 230 MB



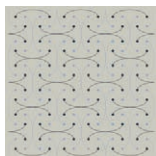
RM 233 B



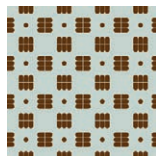
TO 232 AB



FG 209



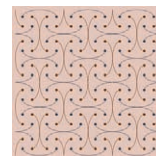
VE 209 AB



RM 201 M



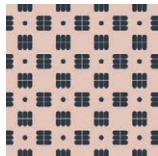
FG 233



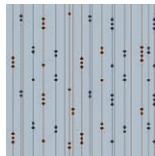
VE 230 MB

ACCOSTAMENTI CROMATICI

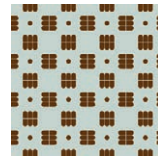
SUGGESTION FOR TILE COMBINATION



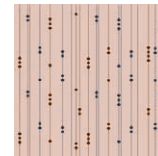
RM 230 B



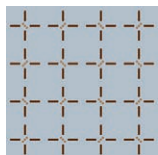
MI 233 MB



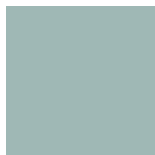
RM 201 M



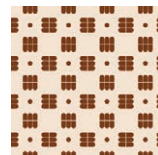
MI 230 MB



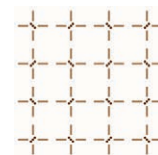
TO 233 MO



FG 232



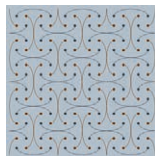
RM 213 M



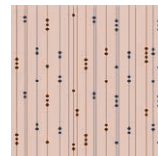
TO 203 OM



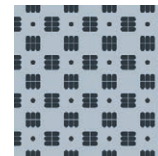
FG 230



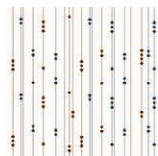
VE 233 MB



MI 230 MB



RM 233 B



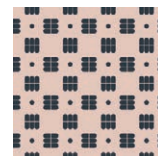
MI 203 MB



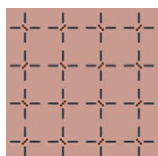
FG 213



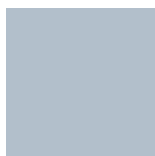
MI 201 OM



RM 230 B



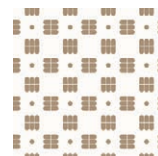
TO 231 BM



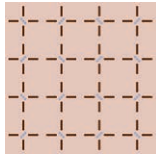
FG 233



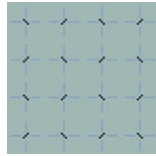
MI 232 OM



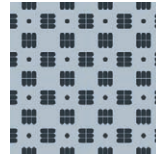
RM 203 O



TO 230 MA



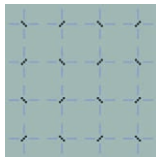
TO 232 AB



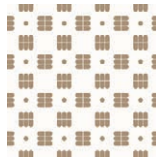
RM 233 B



FG 209



TO 232 AB



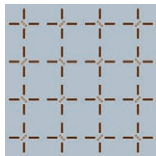
RM 203 O



MI 203 MB



FG 230



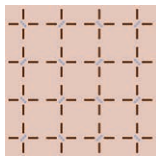
TO 233 MO



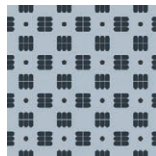
FG 230



FG 232



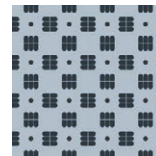
TO 230 MA



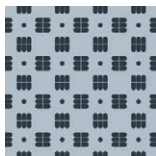
RM 233 B



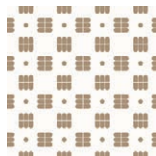
FG 232



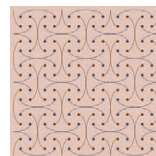
RM 233 B



RM 233 B



RM 203 O



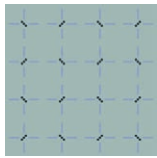
VE 230 MB



FG 209

ACCOSTAMENTI CROMATICI

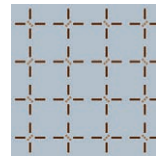
SUGGESTION FOR TILE COMBINATION



TO 232 AB



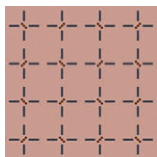
FG 230



TO 233 MO



FG 232



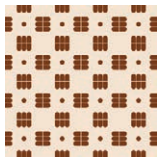
TO 231 BM



FG 201



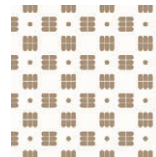
FG 209



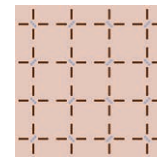
RM 213 M



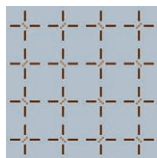
FG 230



RM 203 O



TO 230 MA



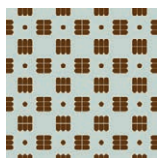
TO 233 MO



FG 209



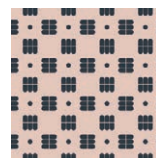
FG 230



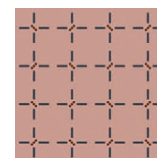
RM 201 M



FG 233



RM 230 B



TO 231 BM

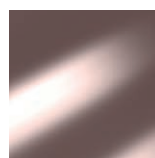
Colori / Colours



006
verniciato bianco
white painted



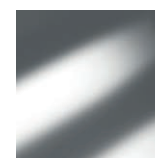
007
verniciato nero
black painted



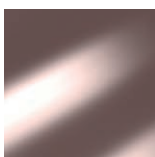
004
brillantato rame
polished copper



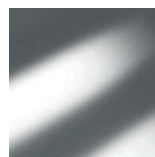
008
brillantato oro
polished gold



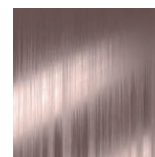
009
brillantato cromo
polished titanium



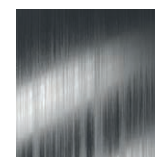
004
brillantato rame
polished copper



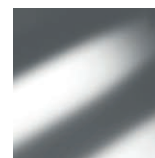
009
brillantato cromo
polished titanium



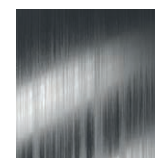
003
satinato rame
brushed copper



010
satinato argento
silver satin



009
brillantato cromo
polished titanium

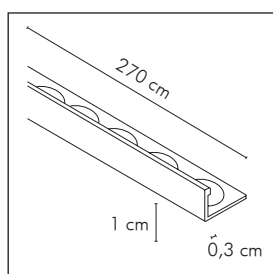


010
satinato argento
silver satin

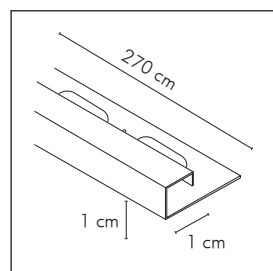
PROFILI PROFILES

Profili in alluminio brillantato / Profiles in glossy aluminium

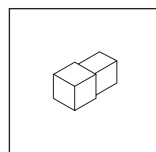
Formati / Sizes



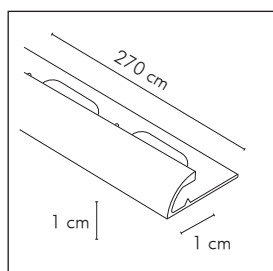
PR
(1x270x1 cm /
 $25/64'' \times 106 \frac{5}{16}'' \times 25/64''$)
profilo/profile



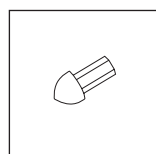
SP
(1x270x1 cm /
 $25/64'' \times 106 \frac{5}{16}'' \times 25/64''$)
profilo/profile



SP/A
(1x1 cm / $25/64'' \times 25/64''$)
terminale/end



SP C
(1x270x1 cm /
 $25/64'' \times 106 \frac{5}{16}'' \times 25/64''$)
profilo/profile



SP C/A
(1x1 cm / $25/64'' \times 25/64''$)
terminale/end











Voci di capitolato / Tender specifications

Piastrelle di ceramica pressate a secco con basso assorbimento di acqua ($0,5\% < E_b \leq 3\%$) Gruppo B1b - M - GL EN 14411:2012 appendice H.
 Glazed ceramic tiles, dry pressed with low water absorption ($0,5\% < E_b \leq 3\%$) Group B1b - M - GL EN 14411:2012 H appendix.

Dimensioni e qualità della superficie / Dimensions and surface quality

formato nominale nominal shape	dimensione di fabbricazione actual size		metodo di prova test methods	requisiti requirements	risultati Vogue Vogue results		
25x25 cm (10"x10")	lati sides	249x249 mm	EN ISO 10545-2	lati sides	$\pm 0,6\%$	lati sides	$\pm 0,3\%$
	spessore thickness	10 mm		spessore thickness	$\pm 5\%$	spessore thickness	$\pm 4\%$
Rettilineità dei lati (superficie di esercizio) Straightness of sides (working surface)			EN ISO 10545-2	$\pm 0,5\%$	$\pm 0,4\%$		
Ortogonalità Squareness			EN ISO 10545-2	$\pm 0,5\%$	$\pm 0,4\%$		
Planarità della superficie Flatness			EN ISO 10545-2	$\pm 0,5\%$	$\pm 0,4\%$		
Qualità della superficie Surface quality			EN ISO 10545-2	min. 95%	min. 95%		




Proprietà fisiche / Physical properties

prova test			metodo di prova test methods	requisiti requirements	risultati Vogue Vogue results
 Massa d'acqua assorbita (%) Water absorption (%)			EN ISO 10545-3	$0,5\% < E_b \leq 3,0\%$	1,5 %
 Resistenza di rottura Tensile strength	spessore thickness $\geq 7,5$ mm		EN ISO 10545-4	1.100 N min.	> 1.700 N
 Modulo di rottura Modulus of rupture			EN ISO 10545-4	30 N/mm ² min.	> 40 N/mm ²
 P.E.I. Resistenza all'abrasione (P.E.I.) Abrasion resistance (P.E.I.)			EN ISO 10545-7	riportare la classe di abrasione quote the abrasion class	vedi pagina prodotto refer to product page
 Coefficiente di dilatazione termica lineare Coefficient of linear thermal expansion			EN ISO 10545-8	metodo di prova disponibile test method available	$< 6,9 \times 10^{-6}/^{\circ}\text{C}$
 Resistenza agli sbalzi termici Thermal shock resistance			EN ISO 10545-9	metodo di prova disponibile test method available	garantita guaranteed
 Resistenza al cavillo Crazing resistance			EN ISO 10545-11	richiesta required	garantita guaranteed
 Resistenza al gelo Frost resistance			EN ISO 10545-12	metodo di prova disponibile test method available	garantita guaranteed
 Dilatazione dovuta all'umidità Expansion to humidity			EN ISO 10545-10	metodo di prova disponibile test method available	< 0,04%
 Resistenza all'urto Impact resistance			EN ISO 10545-5	metodo di prova disponibile test method available	> 0,6 (vedi appendice P catalogo generale) (see P appendix general catalogue)






SCHEDE TECNICHE

TECHNICAL CHARTS



Proprietà antiscivolo / *Non-slip properties* (escluso - *except* GP 015 - GP 020 - GP 025)

prova test	metodo di prova test methods	requisiti requirements	risultati Vogue Vogue results
 determinazione proprietà antiscivolo: Determination of the anti-slip characteristics:	DIN 51130 grado scivolosità non-skid characteristics	R9 aderenza normale normal adhesion $6^\circ \leq \alpha \leq 10^\circ$ R10 aderenza media medium adhesion $10^\circ \leq \alpha \leq 19^\circ$ R11 aderenza elevata high adhesion $19^\circ \leq \alpha \leq 27^\circ$ $\alpha =$ angolo di inclinazione inclination angle	R9
 Pendulum test UK	BS 7976-2:2002	metodo di prova disponibile - test method available	dry >36 wet -
 DCOF – Dynamic Coefficient of Friction (Wet Areas Only)	ANSI A 137.1.:2012		> 0,42

Proprietà chimiche / *Chemical properties*

prova test	metodo di prova test methods	requisiti requirements	risultati Vogue Vogue results
 Resistenza alle macchie Stain resistance	EN ISO 10545-14	classe 3 min.	3 min. (vedi appendice P catalogo generale) (see P appendix general catalogue)
 Resistenza ai prodotti chimici d'uso domestico ed agli additivi per piscina Resistance to chemical products for housekeeping and to the additives used in swimming-pools	EN ISO 10545-13	GB min.	GB min.
 Resistenza ad acidi e basi a bassa concentrazione Resistance to acids and bases at low concentrations	EN ISO 10545-13	indicata dal produttore indicated by the producer	GLB min.
 Resistenza ad acidi e basi ad alta concentrazione Resistance to acids and bases at high concentrations	EN ISO 10545-13	metodo di prova disponibile test method available	GHB min.
 Pb Cd Cessione di piombo e cadmio Lead and cadmium losses	EN ISO 10545-15	metodo di prova disponibile test method available	disponibile a richiesta available if required

Altre prove / *Other tests*

prova test	metodo di prova test methods	requisiti requirements	risultati Vogue Vogue results
 Resistenza dei colori alla luce Colour resistance to light	DIN 51094	non previsto not foreseen	garantita guaranteed
 Reazione al fuoco Reaction to the fire	senza prova without test	decisione 96/603/CE decision 96/603/CE	classe A1

Giunto e componibilità dei formati / *Modularity and laying*

Per ottenere un corretto risultato di posa il materiale deve essere posato con un giunto non inferiore a 2 mm (UNI 11493:2013).
To obtain a correct laying result the material should be laid with joints of no less than 2 mm (UNI 11493:2013).



www.ceramicavogue.it

made in italy

ART DIRECTION: MARCANTE - TESTA

HOUSE OF TILES for Ceramica Vogue:

Progetto architettonico: Marcante - Testa

Immagini : Terzo Piano

Styling : Elisabetta Bongiorno

Stampa: IGP Industrie Grafiche Pacini

Ufficio stampa: info@sabrinagiacchetti.it

Marzo 2019

Ceramica VOGUE
è un marchio di

altaeco

GRUPPO INDUSTRIALE



Socio Ordinario
del GBC Italia



Ceramics of Italy

Ceramica VOGUE
Via Papa Giovanni XIII, 100 - Loc. Vergnasco
13882 Cerrione (BI) ITALIA
T. +39.015.672.1
Fax +39.015.671.626 (Italia)
Fax +39.015.671.352 (Export)
info@cervogue.com

