

THE NEW
CLASSICS



Reverence
for the past
informs the
present.



ESTB. 1978

WATERWORKS



In classic design, time becomes irrelevant. The past melds with the present
in a celebration of enduring elegance and technical mastery.

The ultimate in refinement, these collections showcase the exquisite materials
and quality craftsmanship of Waterworks. Their beauty is defined by clean
proportions, precise execution and the values of the artisans who have shaped
our designs and our company for more than four decades.

These are collections to enhance a bath
and enchant its owner.

TABLE OF CONTENTS

FITTINGS	04	THE MUST-HAVES	100
Boulevard	06	Lighting	102
Foro	12	Knobs, Pulls & Hinges	104
Aero	18	Bars, Shelves & Hooks	106
Etoile	24	Mirrors	109
Julia	30	Bath Furniture	109
		Bath Furnishings	110
MOSAICS, SLABS & STONE	34	LET US HELP	112
The World of Mosaics	36	Service & Support	112
Parramore	38	Contact Us	113
Behind the Design: Parramore Custom Mosaics	50		
MasterPiece	54		
Luminaire	64		
Slabs	76		
Keystone	78		
FIXTURES	94		
Washstands	96		
Sinks	97		
Bathtubs	99		



SECTION 01

FITTINGS

BOULEVARD | FORO | AERO | ETOILE | JULIA

These signature collections embody our legacy of design exploration and time-honored craftsmanship.

Whether projecting formal architectural polish or traditional European elegance, each design is engineered to endure—a feat of unforgettable artistry and proven technology.





BOULEVARD

Inspired by selections of 1930s silver serving pieces, Boulevard projects sophistication through its strong silhouette, lavish scale and crisp, elegant decoration.

Boulevard Tub Filler with Handshower and Cross Handles in Nickel, Keystone Custom Fabricated Slab with Straight Edge in Nero Marquina Polished, Classic Rectangular Bathtub



ABOVE: Boulevard Lever Handle Thermostatic with Cross Handle Shutoff Trim in Unlacquered Brass, Boulevard Volume Control Valve Trim with Cross Handle in Unlacquered Brass, Boulevard Handshower on Hook with Metal Handle in Unlacquered Brass, Keystone Field Tile 12" x 12" x 3/8" in White Onyx Polished

RIGHT: Boulevard Faucet with Crystal Lever Handles in Nickel, MasterPiece Shaker Weave Grande Mosaic in Empress Green Polished and Calacatta Polished, Boulevard Glass Round Two Leg Washstand in Nickel with Keystone Boulevard Single Fabricated Slab 32" x 24" x 2" with Eased Edge in Calacatta Honed, Opus Metal Rectangular Stationary Mirror in Nickel, Addair Single Sconce, Pierre Container and Round Soap Dish



BOULEVARD



Low Profile Three Hole Deck Mounted Lavatory Faucet with Metal Cross Handles
BDLS01



Volume Control Valve Trim with Metal Cross Handle*
BDVC47



Low Profile Three Hole Deck Mounted Lavatory Faucet with Metal Lever Handles
BDLS02



Volume Control Valve Trim with Metal Lever Handle*
BDVC48



Low Profile Three Hole Deck Mounted Lavatory Faucet with Crystal Lever Handles
BDLS03



Volume Control Valve Trim with Crystal Lever Handle*
BDVC49



Metal Lever Thermostatic with Metal Cross Handle Shutoff Trim*
BDTH58



Handshower on Hook with Metal Handle
BDHS25



3 1/2" Shower Head, Arm and Flange
BDSH71

BOULEVARD



Low Profile Concealed Tub Filler with Handshower and Metal Cross Handles
BDTF87



Single Robe Hook
BDRH28



Low Profile Concealed Tub Filler with Handshower and Metal Lever Handles
BDTF88



Wall Mounted Three Piece Paper Holder
BDPH19



Low Profile Concealed Tub Filler with Handshower and Crystal Lever Handles
BDTF89



24" Single Metal Towel Bar
BDTB01



Wall Mounted Tub Spout
BDTS82



24" Single Crystal Towel Bar
BDTB03



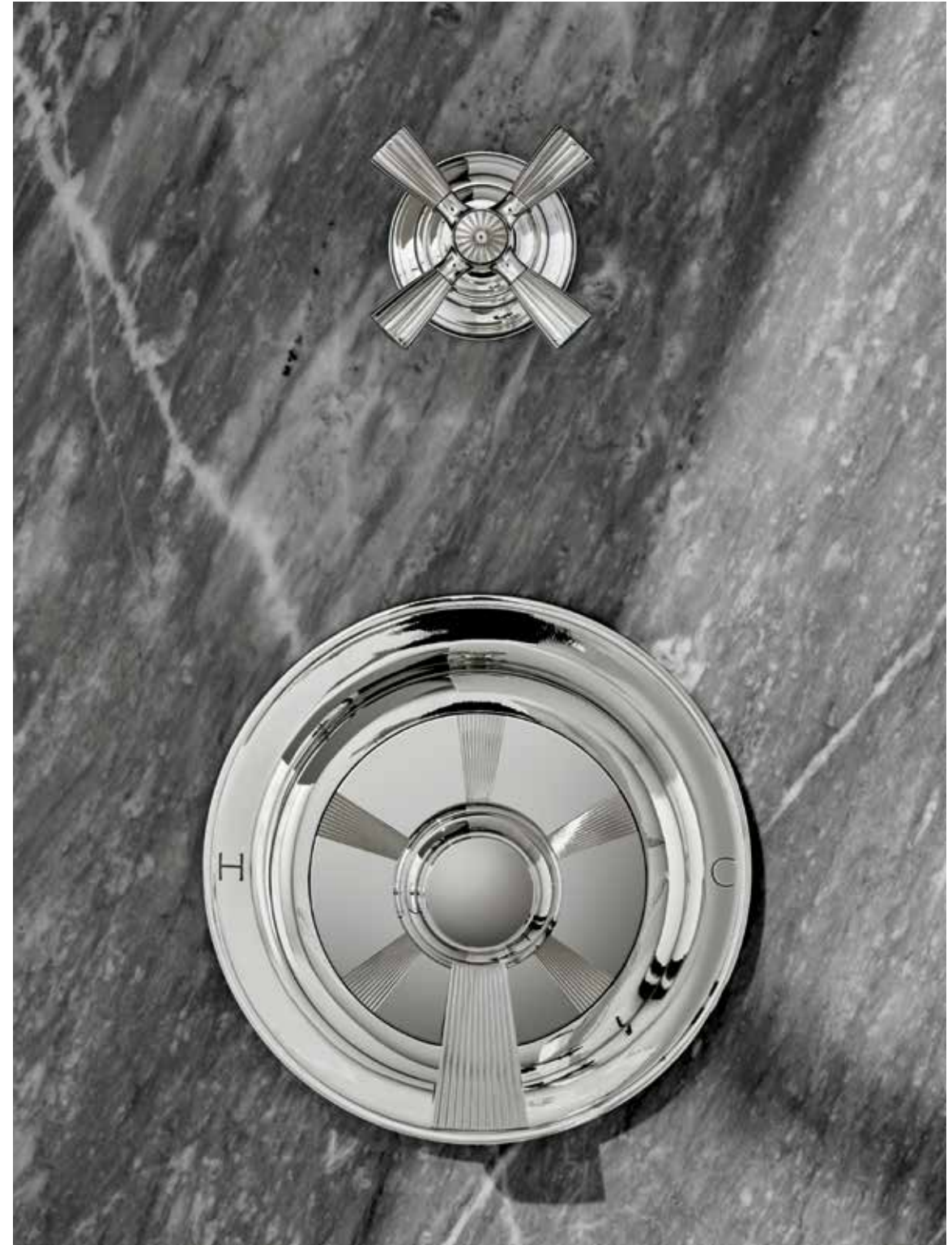
Single Tier Shelf
BDSF24

FORO

With an unexpected play of historical references—from Georgian neoclassical profiles to finely etched vintage silver—Foro creates a striking formal statement through its strong sense of scale. The product of a collaboration with Thomas O'Brien, this elegant style carries the echo of something familiar yet feels distinctly of the moment.



Foro Faucet with Cross Handles in Nickel, Architectonics Handmade Field Tile 3" x 6" in Pewter Matte Solid, Lucerne Metal Two Leg Single Washstand in Nickel with 4 3/4" Built Up Straight Edge Carrara Honed Slab and Backsplash, Asscher Soap Dish, Canter Large Container, Engine Turned Pewter Soap Dispenser



LEFT: Foro Faucet with Lever Handles in Unlacquered Brass, MasterPiece Twill Stripe Petite Mosaic in Athens Gray Polished and Whitewood Polished, Opus Metal Round Single Two Leg Washstand in Unlacquered Brass with Keystone Opus Single Fabricated Slab 36" x 21 1/4" x 2" with Eased Edge in Imperial Danby Polished, Foro 24" Towel Bar, Luster Toothbrush Holder, Marseille Hand Towel and Wash Towel, Pierre Soap Dispenser

ABOVE: Foro Volume Control Valve Trim with Cross Handle in Nickel, Foro Thermostatic Control Valve with Lever Handle in Nickel, Keystone Field Tile 24" x 36" in Bardiglio Dark Polished



Low Profile Three Hole Deck Mounted Lavatory Faucet with Metal Cross Handles
FRLS01



Volume Control Valve Trim with Metal Cross Handle*
FRVC01



Low Profile Three Hole Deck Mounted Lavatory Faucet with Metal Lever Handles
FRLS10



Volume Control Valve Trim with Metal Lever Handle*
FRVC10



Gooseneck Three Hole Deck Mounted Lavatory Faucet with Metal Cross Handles
FRLS20



Two Way Diverter Valve for Thermostatic with Metal Cross Handle*
FR2T01



Gooseneck Three Hole Deck Mounted Lavatory Faucet with Metal Lever Handles
FRLS30



Two Way Diverter Valve for Thermostatic with Metal Lever Handle*
FR2T10



Three Hole Wall Mounted Lavatory Faucet with Metal Cross Handles*
FRLS60



Three Way Diverter Valve for Thermostatic with Metal Cross Handle*
FR3T01



Three Hole Wall Mounted Lavatory Faucet with Metal Lever Handles*
FRLS70



Three Way Diverter Valve for Thermostatic with Metal Lever Handle*
FR3T10



Thermostatic Control Valve Trim with Metal Lever Handle*
FRTH01



Handshower on Hook with Metal Handle
FRHS01



Ceiling Mounted Shower Arm and Flange
FRSH03

Ceiling Mounted 10" Shower Rose, Arm and Flange
FRSH30



Floor Mounted Exposed Tub Filler with Metal Handshower and Cross Handles
FRXT60



Wall Mounted Shower Arm and Flange
FRSH02



Floor Mounted Exposed Tub Filler with Metal Handshower and Lever Handles
FRXT70



Wall Mounted 6" Shower Rose, Arm and Flange
FRSH10



Wall Mounted Tub Spout
FRTS01



Deck Mounted Exposed Tub Filler with Metal Handshower and Cross Handles
FRXT40



Single Robe Hook
FRRH01



Deck Mounted Exposed Tub Filler with Metal Handshower and Lever Handles
FRXT50



Wall Mounted Three Piece Paper Holder
FRPH01



Wall Mounted Exposed Tub Filler with Metal Handshower and Cross Handles
FRXT20



6" Wall Mounted Towel Ring
FRTB01



Wall Mounted Exposed Tub Filler with Metal Handshower and Lever Handles
FRXT30



24" Single Metal Towel Bar
FRTB24



Aero Tub Filler with Handshower and Lever Handles in Unlacquered Brass, Keystone Fabricated Slabs, Field Tile 24" x 36", "A" Rail 1 3/4" x 12" and Standard Base 5" x 12" in Venato Polished, Luminaire Crosshatch Mosaic in Carrara Polished, Empire Freestanding Rectangular Bathtub

AERO

Two decades after its introduction, Waterworks first collaboration with Thomas O'Brien stands strong. Inspired by the stepped and gadrooned details of 19th-century telescopes, Aero combines gentle, refined lines with both contemporary and traditional touches.

A true original,
reinterpreted
to reflect modern
sensibilities.



Aero Faucet with Cross Handles in Sovereign, Keystone Custom Fabricated Slab with Straight Edge and Backsplash with Cove Edge in Statuary Polished, Normandy Copper Sink in Nickel, Belden Custom Vanity in Antique Walnut with Mesh Doors, Aero Pulls, Andrian Soap Dish, Pierre Container



Low Profile Three Hole Deck Mounted Lavatory Faucet with Metal Cross Handles
AELS01



Two Way Diverter Valve Trim for Thermostatic with Metal Cross Handle*
AE2T01



Low Profile Three Hole Deck Mounted Lavatory Faucet with Metal Lever Handles
AELS02



Two Way Diverter Valve Trim for Thermostatic with Metal Lever Handle*
AE2T10



Gooseneck Three Hole Deck Mounted Lavatory Faucet with Metal Cross Handles
AELS40



Three Way Diverter Valve Trim for Thermostatic with Metal Cross Handle*
AE3T01



Gooseneck Three Hole Deck Mounted Lavatory Faucet with Metal Lever Handles
AELS50



Three Way Diverter Valve Trim for Thermostatic with Metal Lever Handle*
AE3T10



Volume Control Valve Trim with Metal Cross Handle*
AEVC57



Handshower on Hook with Metal Handle
AEHS25



Volume Control Valve Trim with Metal Lever Handle*
AEVC59



2 3/4" Shower Head, Arm and Flange
AESH72



Thermostatic Control Valve Trim with Metal Lever Handle*
AETH58



Wall Mounted 5" Shower Head, Arm and Flange
AESH10



Low Profile Concealed Tub Filler with Handshower and Metal Cross Handles
AETF88



Wall Mounted Tub Spout
AETS82



Low Profile Concealed Tub Filler with Handshower and Metal Lever Handles
AETF89



One Hole Bidet Fitting with Cross Handles
AEBF10



Deck Mounted Exposed Tub Filler with Handshower and Metal Cross Handles
AEXT40



Single Robe Hook
AERH01



Deck Mounted Exposed Tub Filler with Handshower and Metal Lever Handles
AEXT50



Double Robe Hook
AERH02



Wall Mounted Exposed Tub Filler with Handshower and Metal Cross Handles
AEXT20



Wall Mounted Three Piece Paper Holder
AEPH01



Wall Mounted Exposed Tub Filler with Handshower and Metal Lever Handles
AEXT30



Wall Mounted Towel Ring
AETB04



Floor Mounted Exposed Tub Filler with Handshower and Metal Cross Handles
AEXT60



24" Single Metal Towel Bar
AETB24

ETOILE

The definition of time-honored European style. Etoile's cultural pedigree is evident in its design, a sophisticated choreography of gracious curves with rich classical appeal.



Etoile Tub Filler with Handshower and Cross Handles in Nickel, Parramore Anne Mosaic in Kay's Green Polished, Angora Tumbled and Afyon White Tumbled, Keystone Custom Fabricated Slab with Beveled Edge in Calacatta Polished, Candide Freestanding Oval Cast Iron Bathtub



Uniquely versatile,
Etoile brings
European polish to
elegant spaces.

Etoile Faucet (Curved Spout) with Cross Handles in Unlacquered Brass, Keystone Field Tile 6" x 12" in Agatha Polished, Keystone Custom Fabricated Slab and Backsplash with Ogee Edge in Agatha Polished



Low Profile Three Hole Deck Mounted Lavatory Faucet with Metal Cross Handles
ETLS42



Low Profile Three Hole Deck Mounted Lavatory Faucet with Metal Lever Handles
ETLS43



Low Profile Three Hole Deck Mounted Lavatory Faucet (Flared Spout) with Lever Handles
ETLS50



Gooseneck Three Hole Deck Mounted Lavatory Faucet with Metal Cross Handles
ETLS61



Gooseneck Three Hole Deck Mounted Lavatory Faucet with Metal Lever Handles
ETLS62



Low Profile Two Hole Wall Mounted Lavatory Faucet (Straight Spout) with Cross Handles*
ETLS66



Low Profile Two Hole Wall Mounted Lavatory Faucet (Curved Spout) with Cross Handles*
ETLS69



Etoile Thermostatic Control Valve Trim with Metal Cross Handle*
ETTH26



Volume Control Valve Trim White Porcelain Hot Indice with Cross Handle*
ETVC71



Volume Control Valve Trim White Porcelain Blank Indice with Cross Handle*
ETVC70



Ceiling Mounted 8" Shower Rose, Arm and Flange
ETSH17



Ceiling Mounted 12 1/2" Shower Rose and Arm
ETSH27



Wall Mounted 4 1/2" Shower Rose, Arm and Flange
ETSH85



Wall Mounted 8" Shower Rose, Arm and Flange
ETSH19

Handshower on Hook with White Porcelain Handle
ETHS37



Exposed Thermostatic System with 4 1/2" Shower Rose and White Porcelain Lever Handle
ETXS53



Exposed Thermostatic System with 4 1/2" Shower Rose, Handshower and White Porcelain Lever Handle
ETXS54



Exposed Thermostatic System with 8" Shower Rose, Handshower and White Porcelain Lever Handle
ETXS58



Exposed Tub Filler with Handshower and Cross Handles
ETXT60



Wall Mounted Tub Spout
ETTS62



One Hole Bidet Fitting with Cross Handles
ETBF30



Single Robe Hook
ETRH19

Double Robe Hook
ETRH63



Wall Mounted Swing Arm Paper Holder
ETPH37



Wall Mounted Covered Paper Holder
ETPH47



24" Single Glass Towel Bar
ETTB01



25 1/4" Metal Hotel Rack
ETHR01



Single Tier Shelf
ETSF24



Wall Mounted Rectangular Shower Caddy
ETSC01



28" Freestanding Metal Towel Rack
ETTB93



Julia Faucet in Nickel, Architectonics Handmade Decorative Field Tile Pin Welt 6" x 7" in Icedwater Glossy Crackle, Belle Epoque Two Leg Single Console, Modern Recessed Wood Medicine Cabinet (Painted), Cavea Soap Dish

JULIA

Our unique spin on 1920s French country style. Julia's sculptural detailing and vintage references—like a graceful, high-profile spout—feel undeniably relevant while remaining rooted in the past.



Deck Mounted Marquee Lavatory Faucet with Metal Cross Handles
JULS01



Deck Mounted Marquee Lavatory Faucet with Metal Lever Handles
JULS10



Low Profile Three Hole Deck Mounted Lavatory Faucet with Metal Cross Handles
JULS77



High Profile Three Hole Deck Mounted Lavatory Faucet with Metal Cross Handles
JULS18



High Profile Three Hole Deck Mounted Lavatory Faucet with Metal Lever Handles
JULS20



High Profile Three Hole Deck Mounted Lavatory Faucet with White Porcelain Lever Handles
JULS21



High Profile Three Hole Wall Mounted Lavatory Faucet with Metal Cross Handles*
JULS39



High Profile Three Hole Wall Mounted Lavatory Faucet with Metal Lever Handles*
JULS40



High Profile Three Hole Wall Mounted Lavatory Faucet with White Porcelain Lever Handles*
JULS41



High Profile One Hole Deck Mounted Lavatory Faucet with Metal Lever Handles
JULS09



Volume Control Valve Trim with Metal Cross Handle*
JUVC34



Volume Control Valve Trim with Metal Lever Handle*
JUVC50



Volume Control Valve Trim with White Porcelain Lever Handle*
JUVC51



Thermostatic Control Valve Trim with Metal Cross Handle*
JUTH59



Thermostatic Control Valve Trim with Metal Lever Handle*
JUTH60

Thermostatic Control Valve Trim with White Porcelain Lever Handle*
JUTH61



Pressure Balance Control Valve Trim with White Porcelain Lever Handle*
JUPB32

Pressure Balance Control Valve Trim with Metal Lever Handle*
JUPB31



Pressure Balance with Diverter Trim with Metal Lever Handle*
JUPB41

Pressure Balance with Diverter Trim with White Porcelain Lever Handle*
JUPB42



Handshower on Hook with Metal Handle
JUHS11



Handshower on Hook with White Porcelain Handle
JUHS12



Handshower on Bar with Metal Handle
JUHS01



Handshower on Bar with White Porcelain Handle
JUHS02



High Profile Concealed Tub Filler with Metal Handshower and Metal Cross Handles
JUTF19



High Profile Concealed Tub Filler with Metal Handshower and Metal Lever Handles
JUTF20



High Profile Concealed Tub Filler with Metal Handshower and White Porcelain Lever Handles
JUTF21



Exposed Tub Filler with Handshower and Metal Lever Diverter
JUXT02



Exposed Tub Filler with Handshower and White Porcelain Lever Diverter
JUXT01



Julia Wall Mounted Tub Spout
JUTS17

SECTION 02

MOSAICS, SLABS & STONE

PARRAMORE | MASTERPIECE | LUMINAIRE | KEYSTONE

A cut above. Beautiful, elegant and distinctive, our unparalleled mosaics and stone surfaces set an essential foundation for the classical bath.



THE WORLD OF MOSAICS

Discover our discerning edit of mosaic patterns, crafted from the world's finest stone. We've curated these collections to allow for endless customization options that suit any design project.

PARRAMORE

Artisanal, custom mosaic design and fabrication at its best.

PAGE 38



MASTERPIECE

Timeless parquet inspired styles, set in stone.

PAGE 54



LUMINAIRE

Essential geometries and weaves with limitless applications.

PAGE 64





PARRAMORE

Following centuries-old tradition, our Parramore stone mosaics stand out for their unique beauty and superior craftsmanship. In these thoroughly bespoke designs, skillfully executed from hand-cut tesserae or waterjet techniques, the possibilities are limitless. Personalize any of the classic styles in our archives or bring in your own design concept: whether it's a hand-drawn sketch, a fabric remnant or a wallpaper swatch, we will bring it to life as a stunning, one-of-a-kind environment.

Parramore Cabochon Mosaic in Afyon White Polished, Plumeria Polished, Cashmere Honed and Bardiglio Polished, Candide Freestanding Oval Cast Iron Bathtub

PARRAMORE



Key Inlay
PMMOKI



Pinwale
PMMOPW



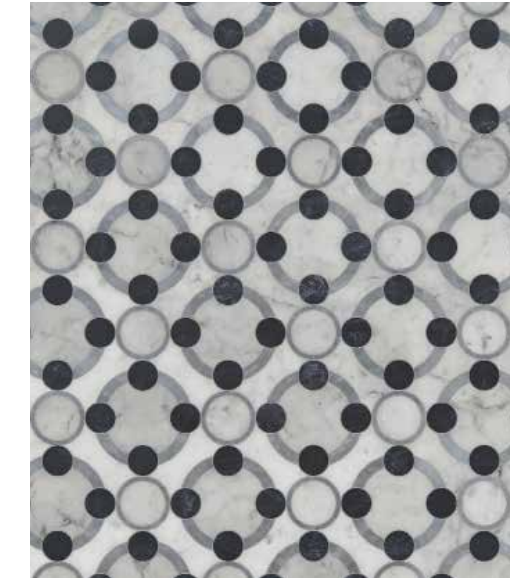
Ikat
PMMOIK



Geowave
PMMOGE



Xander
PMMOXA



Temple
PMMOTM



Quilt Block
PMMOQB



Origami
PMMOOR



Stack
PMMOSS



Dimitri
PMMODM



Clara
PMMOCL



Fortuna
PMMOFO



Andromeda
PMMOAM



Baby Blocks
PMMOBB



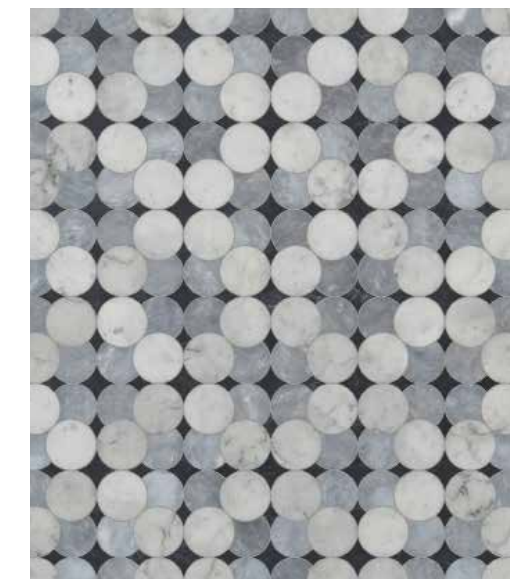
Baby Blocks Grande
PMMOBG



Twine
PMMOTI



Scallop
PMMOSL



Constance
PMMOCO

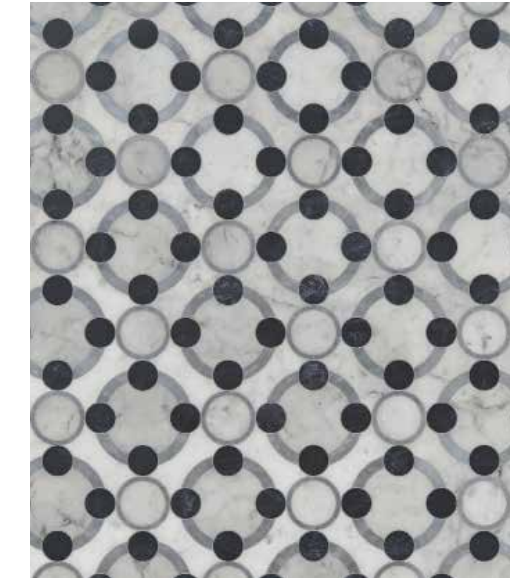
PARRAMORE



Geowave
PMMOGE



Xander
PMMOXA



Temple
PMMOTM



Quilt Block
PMMOQB



Origami
PMMOOR



Stack
PMMOSS



Dimitri
PMMODM



Clara
PMMOCL



Fortuna
PMMOFO



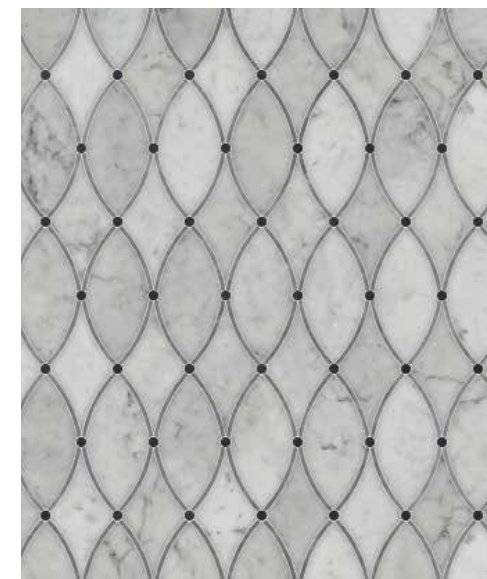
Andromeda
PMMOAM



Baby Blocks
PMMOBB



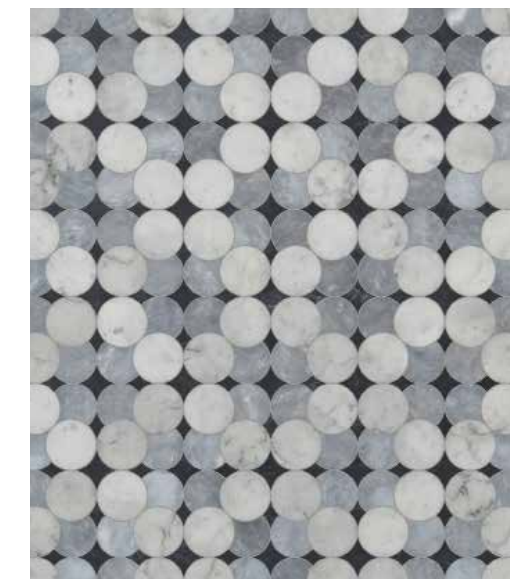
Baby Blocks Grande
PMMOBG



Twine
PMMOTI



Scallop
PMMOSL



Constance
PMMOCO

PARRAMORE



Lyra
PMMOLY



Lara
PMMOLR



Colorforms
PMMOCF



Galahad
PMMOGA



Palladin
PMMOPA



Delphi
PMMODP



Theda
PMMOTH



Lotus Lattice
PMMOLL



Blossom
PMMOBO



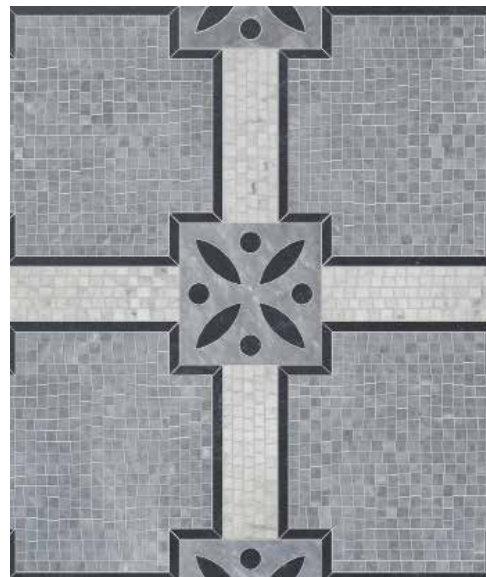
Ogee Vine
PMMOOG



Solid with Tesserae Beatrice
PMMOB1



Tesserae Beatrice
PMMOB2



Lysander
PMMOLS



Demeter
PMMODT



Eisbeth
PMMOEL



Athena
PMMOAT



Flora
PMMOFA



Marguerite
PMMOMA

PARRAMORE

PARRAMORE



Europa
PMMOER



Anne
PMMOAA



Oval Overlay
PMMOOV



Alastair
PMMOAL



Clio
PMMOCE



Cabochon
PMMOCB



Rolland
PMMORO



Gentian
PMMOGN



Tri-Petal
PMMOTP



Parramore Clio Mosaic in Argent Blue Honed, Carrara Tumbled and Palomar Honed,
Universal Shower Drain

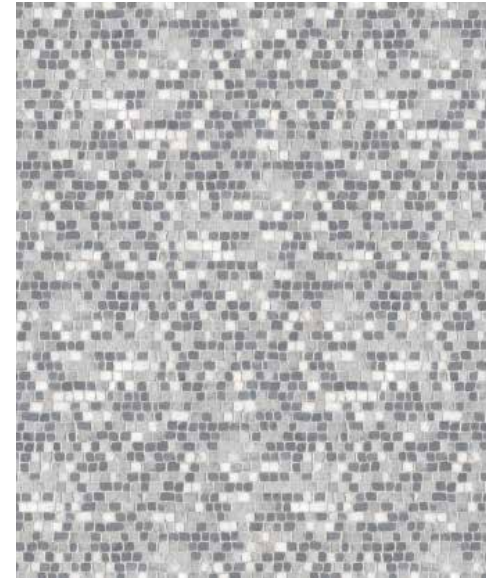
PARRAMORE



Drift
PMMODR



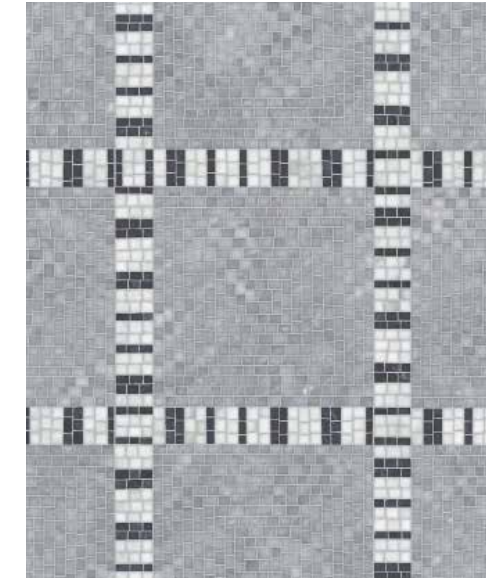
Birch
PMMOBI



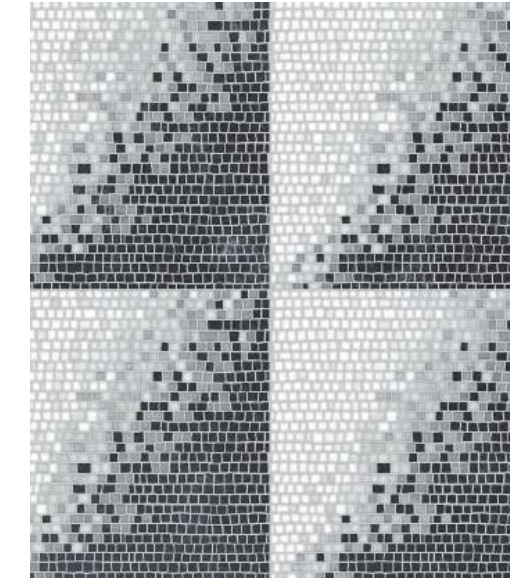
Charlemagne
PMMOCG



Femi
PMMOFM



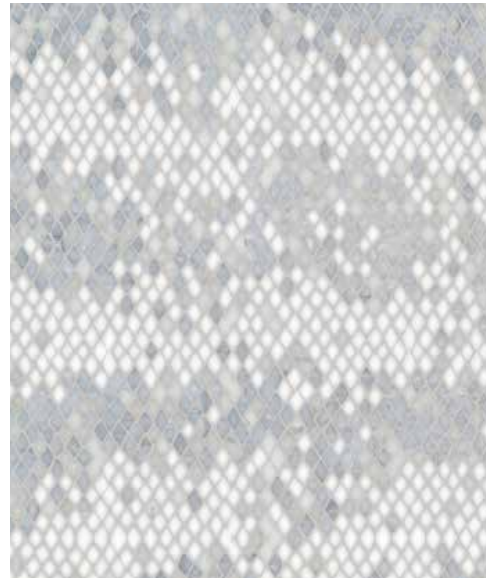
Zanzibar
PMMOZA



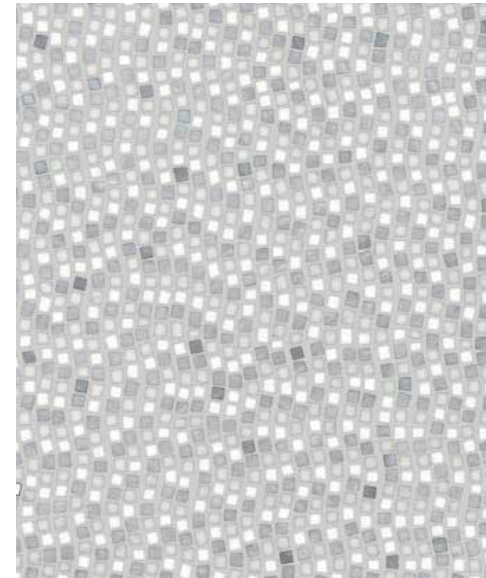
Eclipse
PMMOEC



Abrash
PMMOAR



Rhomic Allover
PMMOR1



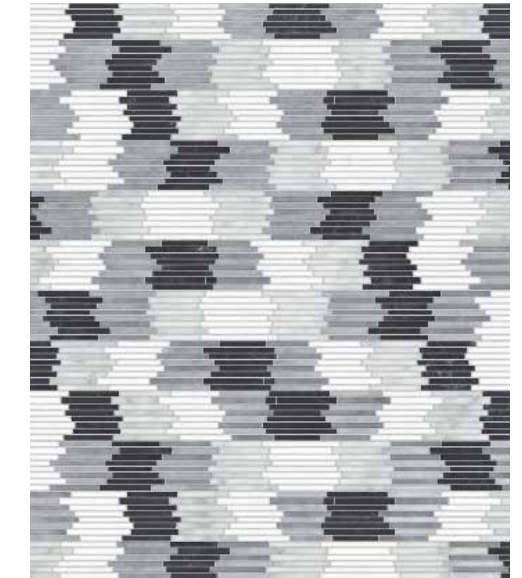
River Run
PMMORV



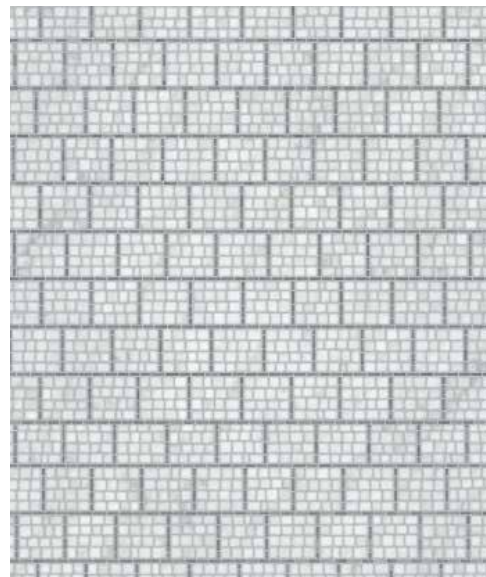
Holden
PMMOHO



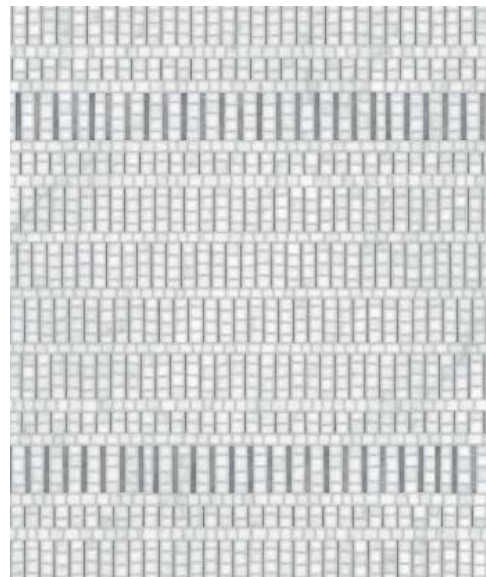
Eero
PMMOEE



Tanner
PMMOTA



Landry
PMMOLA



Morris
PMMOMR



Beni
PMMOBE



.5cm Tatami
PMMOT5



.5cm Tatami Blocks Diagonal
PMMOT2



Simply Sticks
PMMOSK

PARRAMORE

mosaics, slabs & stone

IMPERIAL DANBY

TRAVERTINE WHITE

BLUE MACAUBA

RENAISSANCE BRONZE

ROJO ALICANTE

CREMA MARFIL

JURA BEIGE

ROSA PORTOGALLO

CHINESE BLACK

GRAYSTOKE

RED TRAVERTINE

JURA GREY

BLUE BAHIA

BARDIGLIO DARK

HEAVENLY CREAM

BOTTICINO

CASHMERE

JURA GREEN

CALACATTA GOLD

CHARTREUSE

DRIFTWOOD

VERDE LUNA

ALBA CHIARA

PALOMAR

EMPERADOR DARK

LAVIGNE

THASSOS

EMPERADOR LIGHT

CALACATTA TIA

LAVENDER MIST

TRAVERTINE NOCE

GIALLO REALE

CHINESE PURPLE

WHITEWOOD

SNOW WHITE

GASCOGNE BLUE

PAPERWHITE

THASSOS SELECT

AEGEAN BROWN

SOCORRO GREY

KAY'S GREEN

ANGORA

LAGOS GOLD

CLOUD NINE

BRECCIA ONICIATA

SAINT LAURENT

RED LAKE

TOPAZ ONYX

CALACATTA RADIANCE

ARROWROOT

AFYON WHITE

DESERT PINK

BLUE MACAUBA SELECT

CELESTE

CREMA VALENCIA

SAINT RICHARD

SPRING GREEN

NERO MARQUINA

ALLURE

SAINT VINCENT

VERDE ALPI

BIANCO ANTICO

LETTUCE MING

CAVERN

IVORY CREAM

HONEY ONYX

HORIZON

BARDIGLIO LIGHT

STATUARIETTO

CARRARA

WHITE DOLOMITE

MONTEVIDEO

JERUSALEM GOLD

MING GREEN

ARGENT BLUE

THE PARRAMORE COLOR PALETTE

Photos are representative in color. Please request samples, natural variation can occur.

PARRAMORE CUSTOM MOSAICS

BEHIND THE DESIGN

Artful craft creates endless possibilities.

We offer the finest hand-cut tesserae or waterjet mosaics, made from stones of immaculate color and quality. A testament to our passion for artisanship, Parramore designs are created using techniques that are steeped in tradition and history—satisfying the custom wishes of our discerning clients while rendering works of inimitable character and beauty.

Bespoke Design

Choose from our vast portfolio or create your own original concept. Our design team will help you translate your vision into a timeless, truly personalized work of art.



Design Experience

Our world-class experts will guide you through the process. We'll present you with drawings or renderings, samples and the specific lot photos that we'll use to create your one-of-a-kind mosaic. Provide us with the dimensions and template of your space and we'll tailor the design to fit.

Unrivaled Material Assortment

Our uncompromising selection process ensures that we offer only the best-of-the-best stones, meticulously handpicked from the world's finest quarries for their exquisite color, movement, strength and rarity.



Fabrication Techniques

Each tesserae in our Parramore mosaic designs can be individually hand-clipped or perfectly cut by waterjet—a merging of artisanal techniques and modern-day technology.



Endless Options

Customize your mosaic by choosing from a full spectrum of stones as well as metal and glass accents. Then select your finish: polished, honed or—for a softer, old-world effect—tumbled.



Artful Applications

Stone mosaics have unmatched power to transform a space. Use a fading field of pale shades to bring depth and sophistication to a bath; stone parquet flooring to establish an elegant rhythm in a foyer or hallway; or a monogrammed border to truly personalize your shower.



Hand-Assembled

Pieced together by hand, these truly custom mosaics embody character and personality. Each tesserae is carefully arranged to achieve a balanced composition through colorway and shape.

MASTERPIECE

Referencing classic parquet designs, MasterPiece captures the beauty of stone with an unexpected interplay of its veining and shadings. Each pattern can be scaled up or down to suit your needs; natural variations in the stone add an artful, sophisticated feel.



MasterPiece Shaker Weave Grande Mosaic in Empress Green Polished and Calacatta Polished,
Easton Rectangular Stool in Nickel

MASTERPIECE



Shaker Weave Petite
MPMOSP



Shaker Weave Grande
MPMOSG



Square Cut Petite
MPMOQP



Kerf Block Grande
MPMOKG



Lattice Hex Petite
MPMOHP



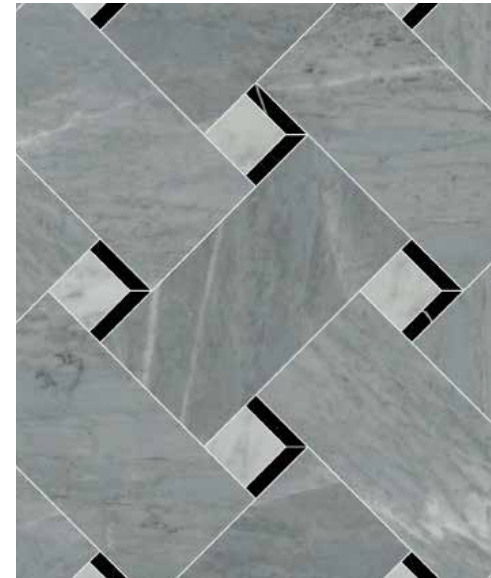
Lattice Hex Grande
MPMOHG



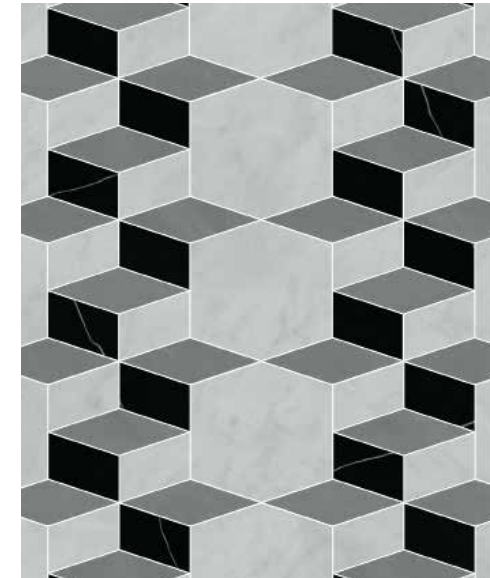
Square Cut Grande
MPMOQG



Lattice Weave Petite
MPMOLP



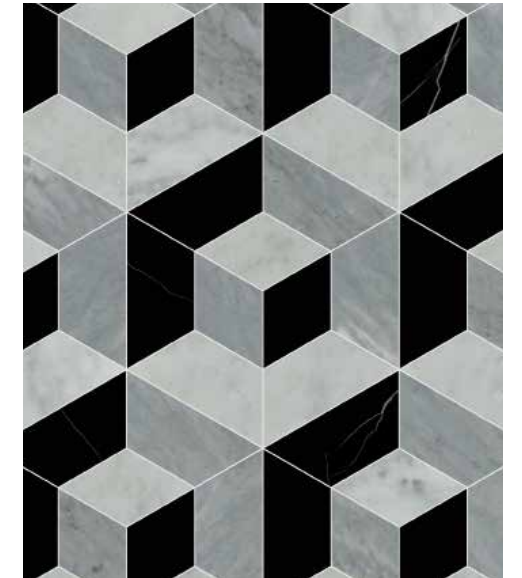
Lattice Weave Grande
MPMOLG



Diamond Block Petite
MPMODP



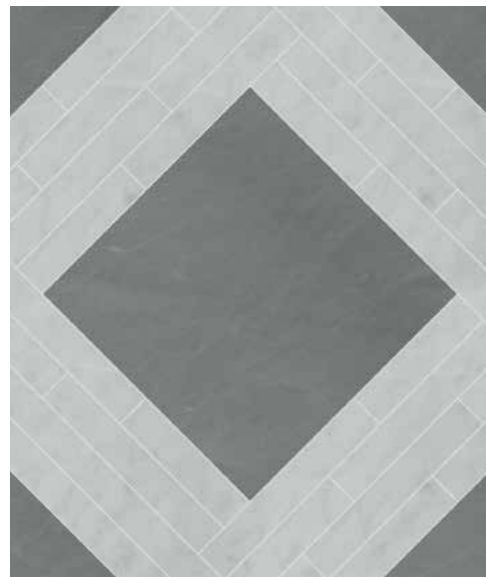
Diamond Block Grande
MPMODG



Cornered Block Petite
MPMOCP



Papyrus Petite
MPMOPP



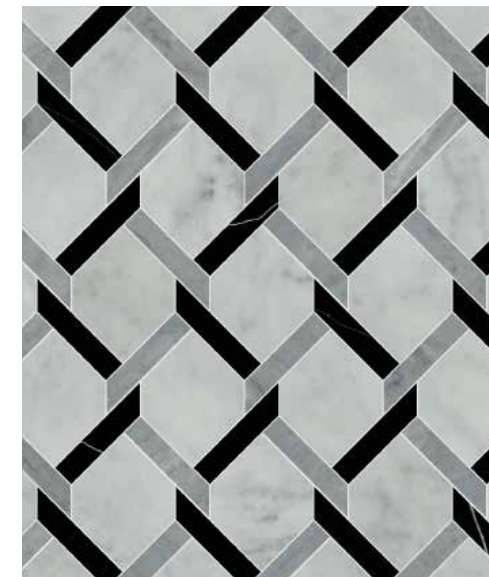
Papyrus Grande
MPMOPG



Kerf Block Petite
MPMOKP



Cornered Block Grande
MPMOCG



Ribbon Weave Petite
MPMORP



Ribbon Weave Grande
MPMORG

MASTERPIECE



Shaker Weave Petite
MPMOSP



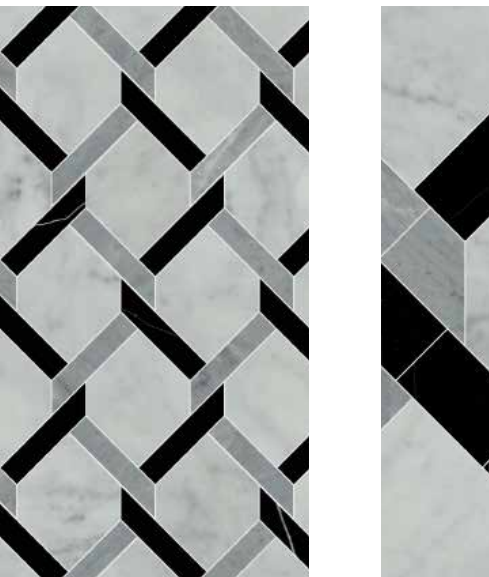
Shaker Weave Grande
MPMOSG



Square Cut Petite
MPMOQP



Square Cut Grande
MPMOQG



Lattice Hex Petite
MPMOHP

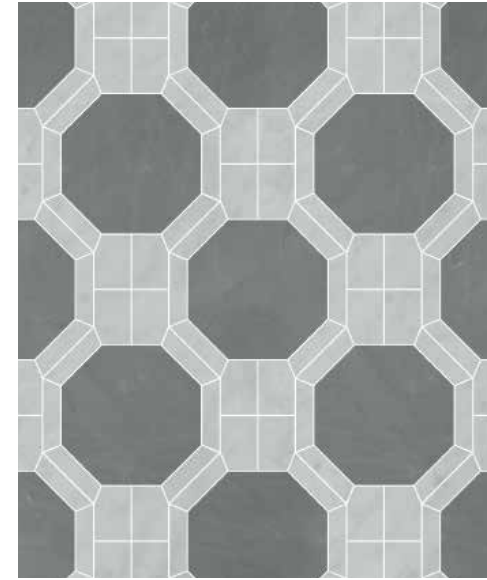


Lattice Hex Grande
MPMOHG

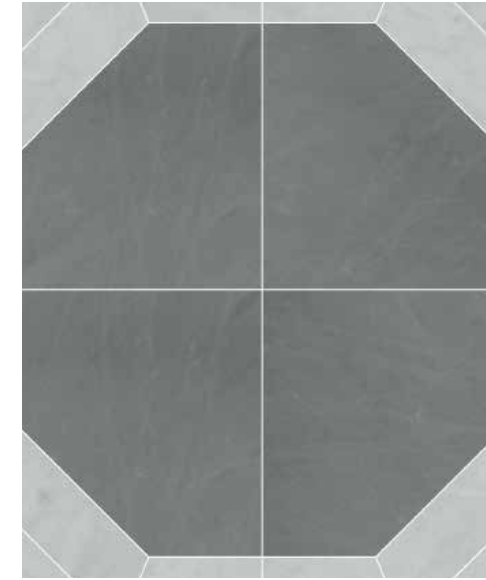


MasterPiece Kerf Block Grande Mosaic in Imperial Danby Polished and Saint Laurent Polished, Estrela Bath Towel, Gotham Bath Towel

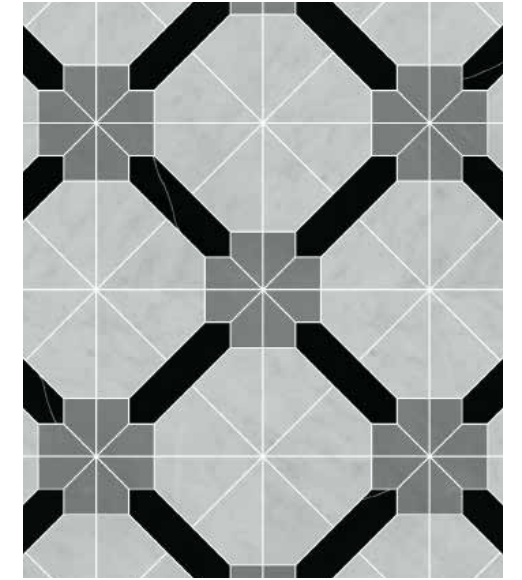
MASTERPIECE



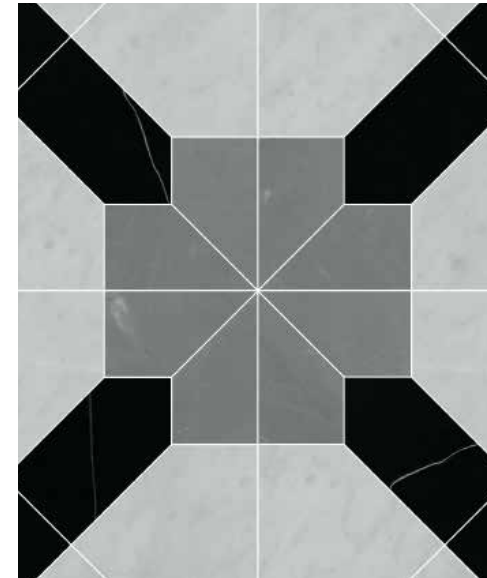
Octagon Weave Petite
MPMOOP



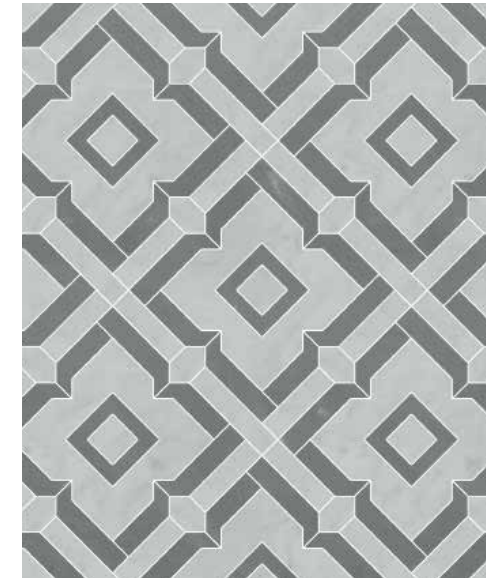
Octagon Weave Grande
MPMOOG



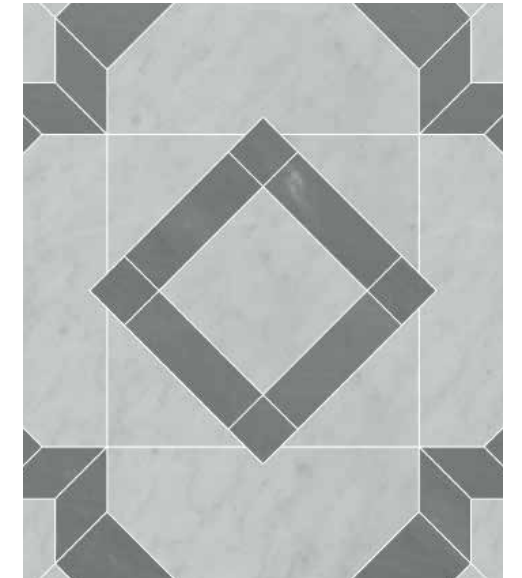
Inlay Petite
MPMONP



Inlay Grande
MPMONG



Fretwork Petite
MPMOFP



Fretwork Grande
MPMOFG



Parquet Petite
MPMOUP



Parquet Grande
MPMOUG



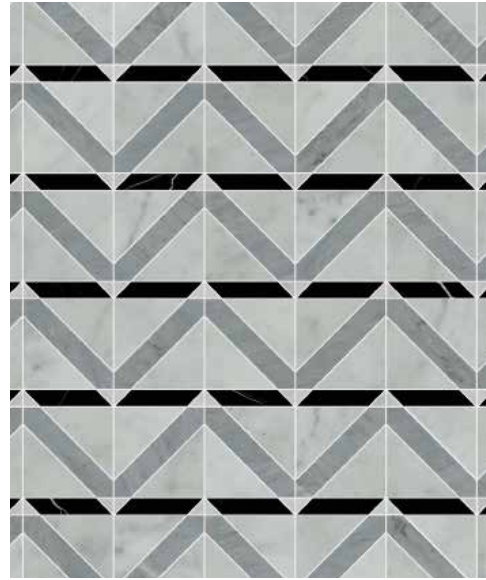
Woven Bands Petite
MPMOWP

Photos are representative in color and shown as a 20" x 24" area. Please request samples, natural variation can occur.

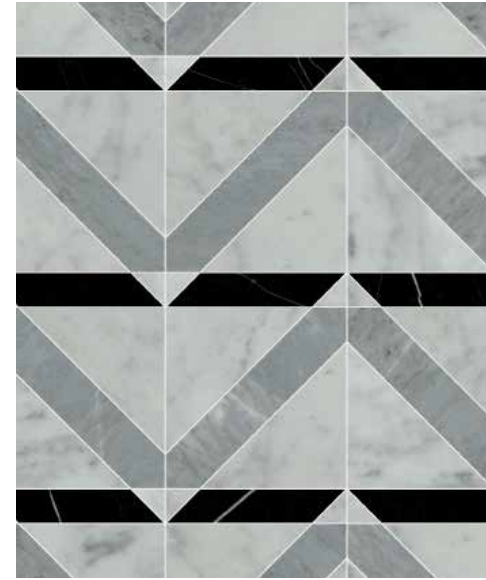
MASTERPIECE



Woven Bands Grande
MPMOWG



Triangle Street Petite
MPMOIP



Triangle Street Grande
MPMOIG



Bar Graphic Petite
MPMOBP



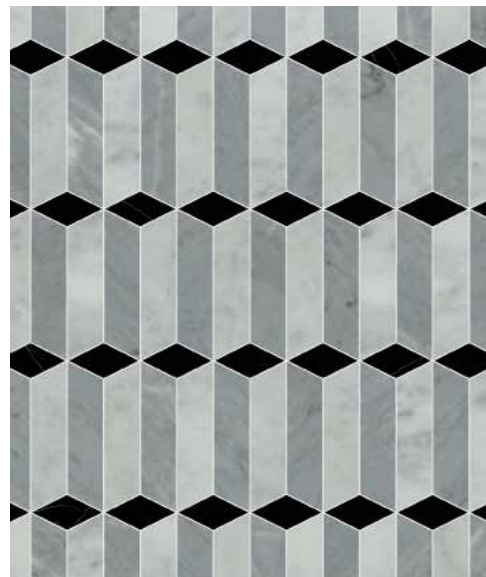
Bar Graphic Grande
MPMOBG



Twill Stripe Petite
MPMOTP



Twill Stripe Grande
MPMOTG



Ascend Petite
MPMOAP



Ascend Grande
MPMOAG



MasterPiece Lattice Hex Petite Mosaic in Ming Green Polished



THE
 MASTERPIECE
 COLOR PALETTE

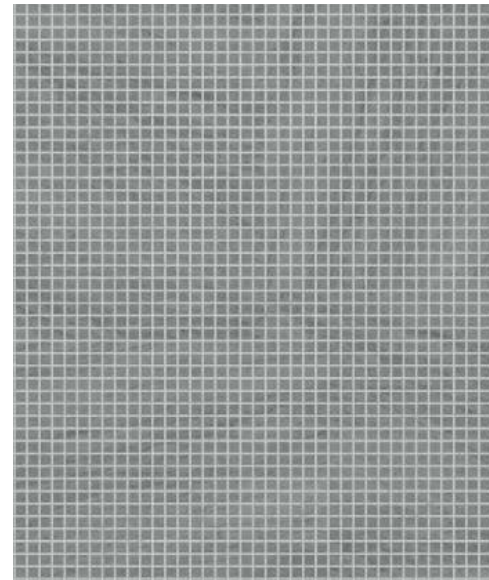


LUMINAIRE

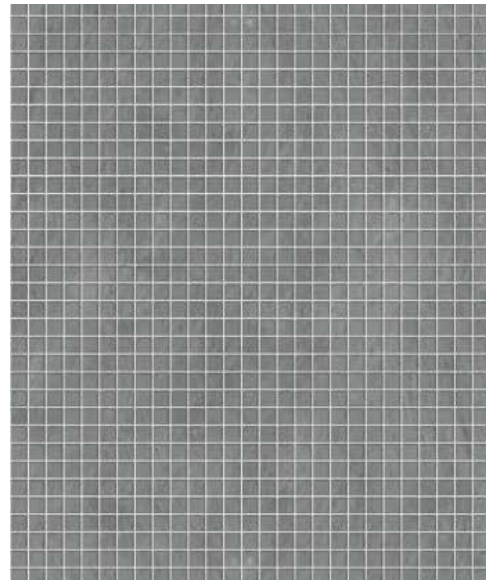
Precisely cut, these hand-assembled mosaics come in a wide range of styles and color blends, creating graphic shapes and repeating patterns that transform walls and floors. The breadth of the assortment invites confident design decisions, making it easy to add interest to any environment.

Luminaire Square Mosaic in Aurora Polished, Carrara Polished and Bardiglio Polished,
Pelham Metal Four Leg Single Washstand in Nickel

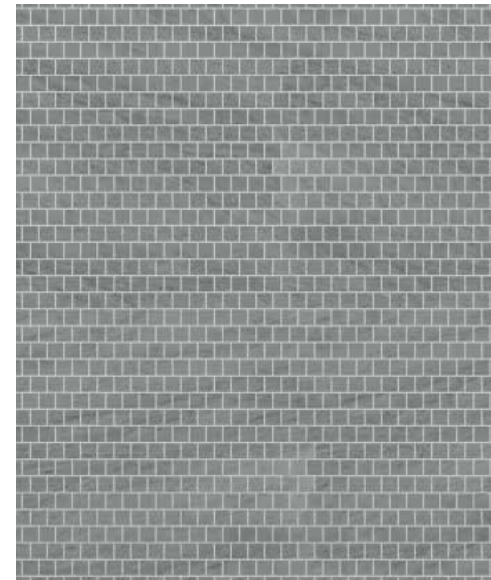
LUMINAIRE



1cm Stacked
LMMS01



1.5cm Stacked
LMMS15



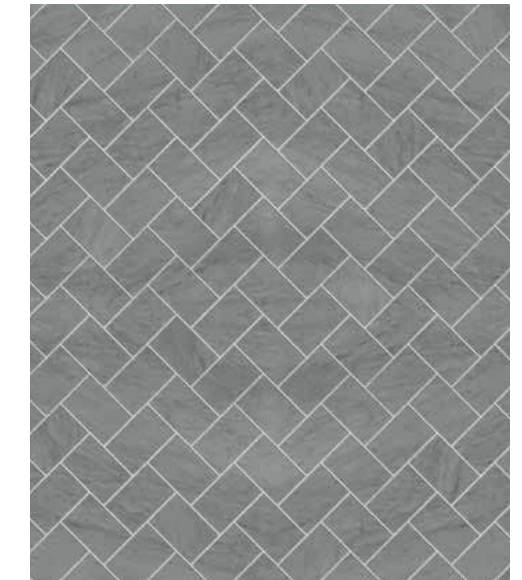
1.5cm Staggered
LMSM15



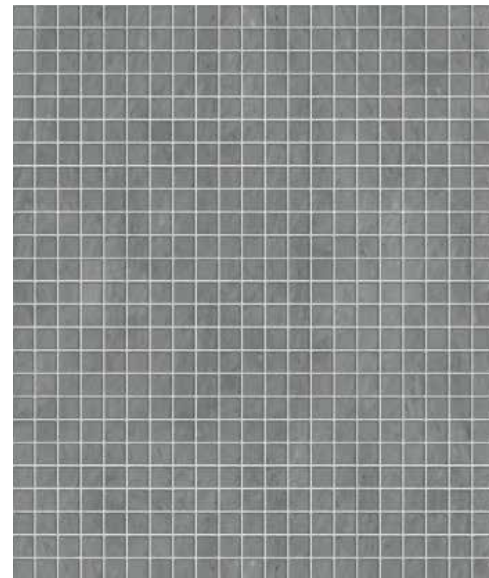
4cm x 6cm Staggered
LMSM46



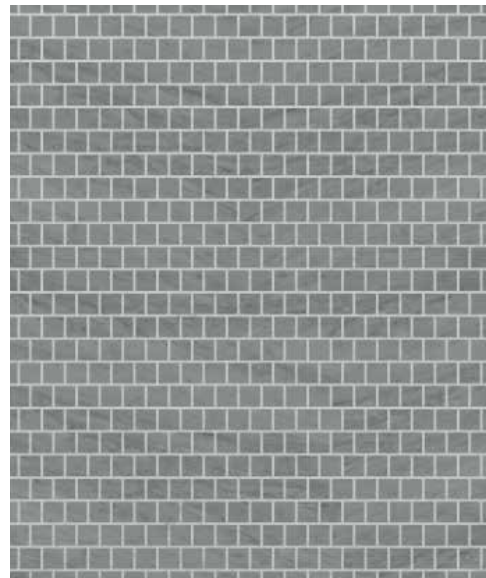
2cm x 4cm Herringbone
LMMOH2



4cm x 6cm Herringbone
LMMOH4



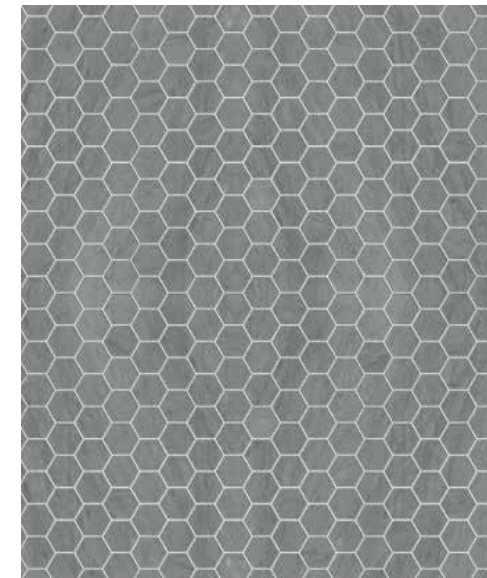
2cm Stacked
LMMS02



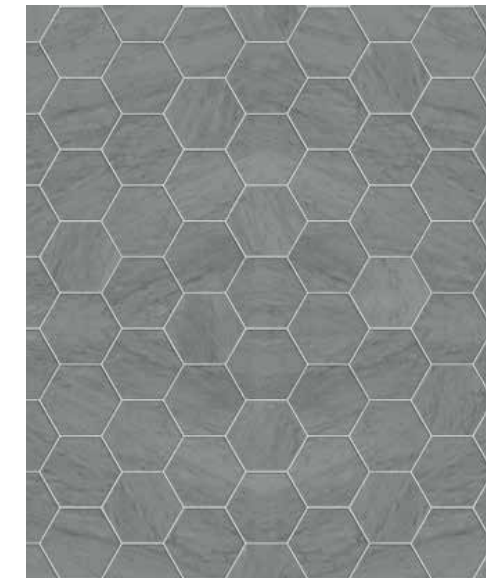
2cm Staggered
LMSM02



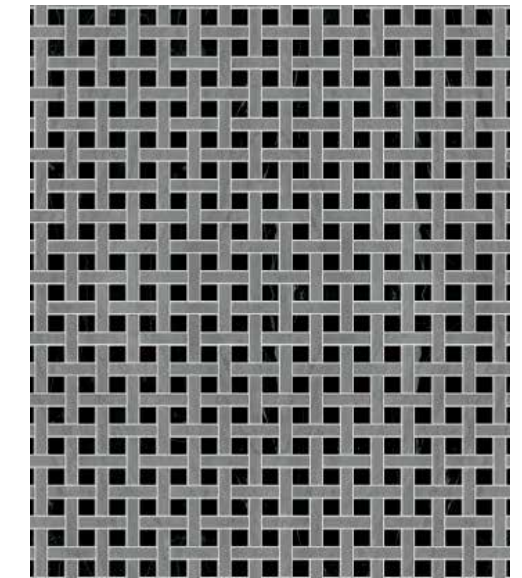
2cm Hand Clipped
LMMOHC



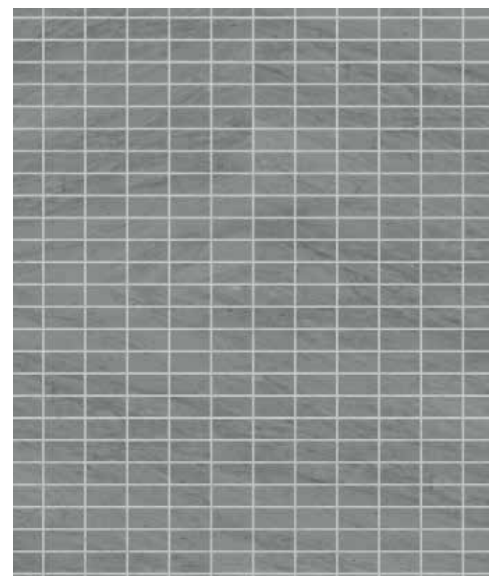
3cm Hexagon
LMMOH3



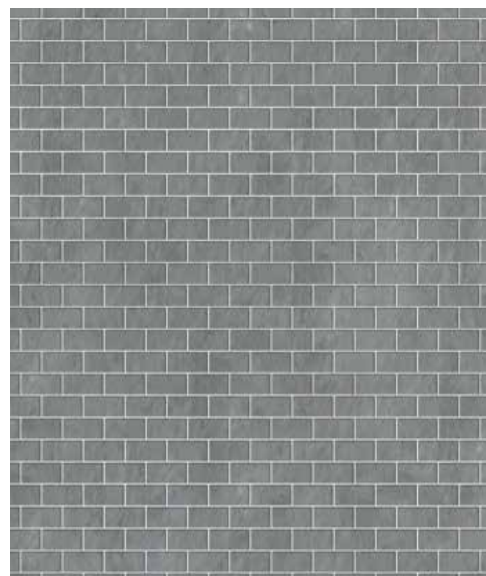
7cm Hexagon
LMMOH7



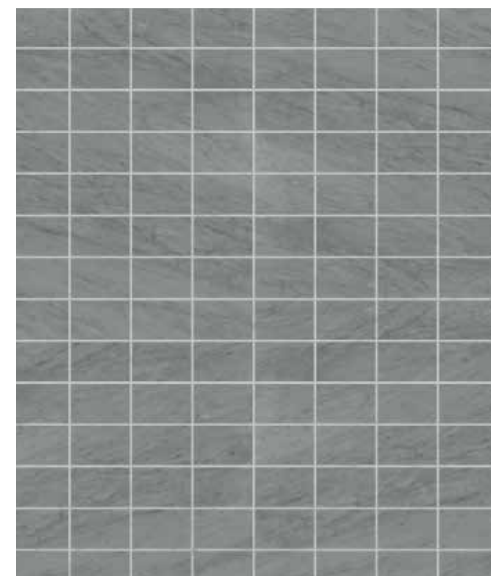
1cm x 5cm Basketweave
LMMOB1



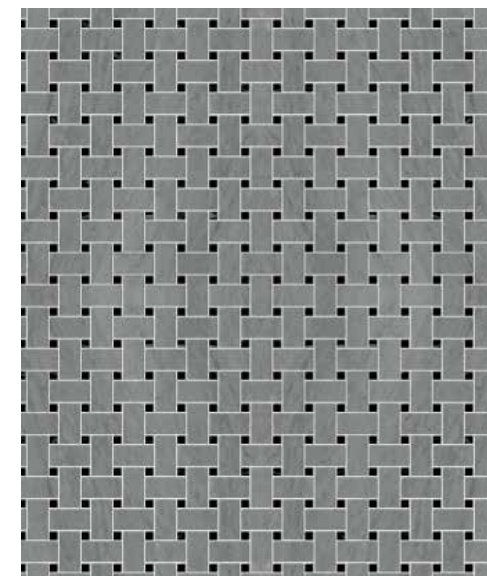
2cm x 4cm Stacked
LMMS24



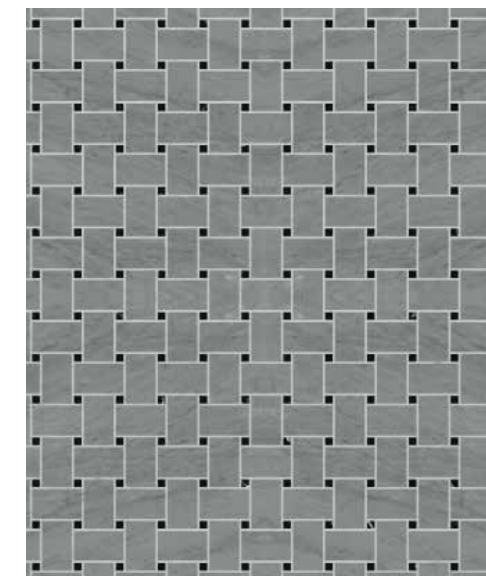
2cm x 4cm Staggered
LMSM24



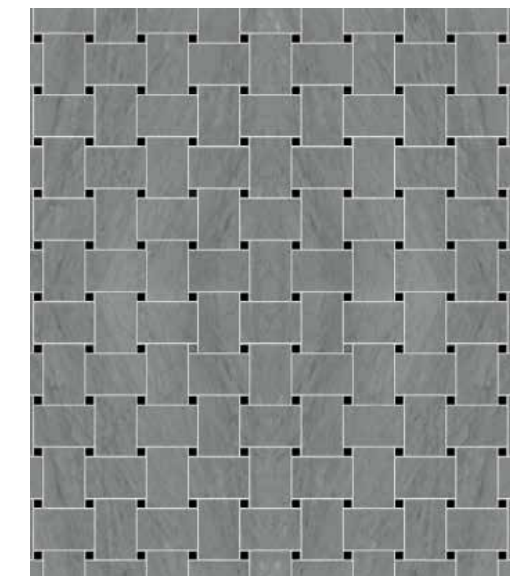
4cm x 6cm Stacked
LMMS46



2cm x 4cm Basketweave
LMMOB2

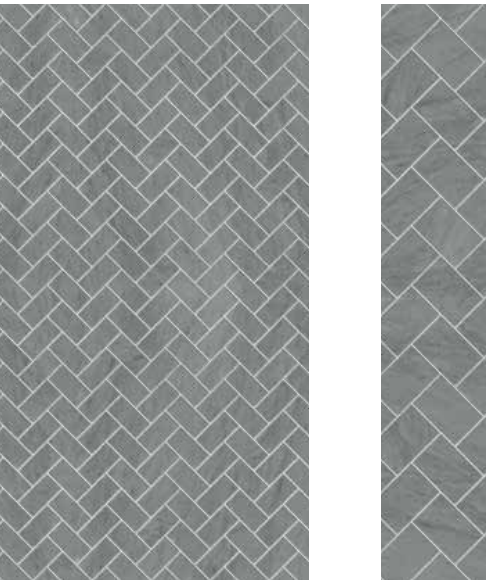


3cm x 5cm Basketweave
LMMOB3



4cm x 6cm Basketweave
LMMOB4

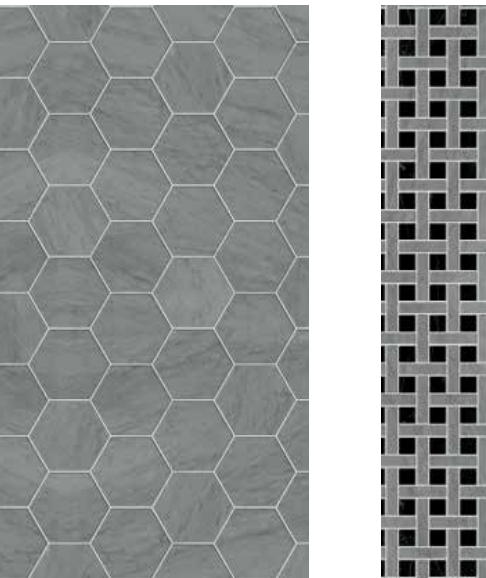
LUMINAIRE



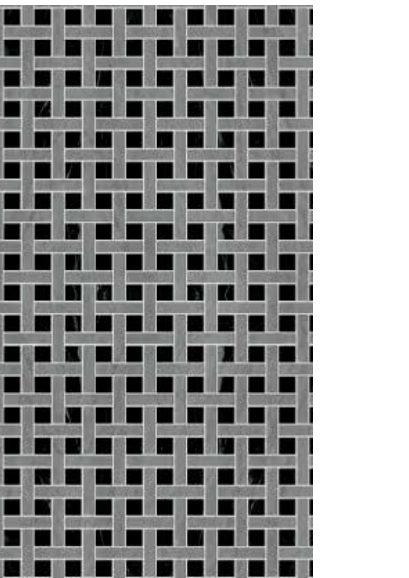
2cm x 4cm Stacked
LMMS04



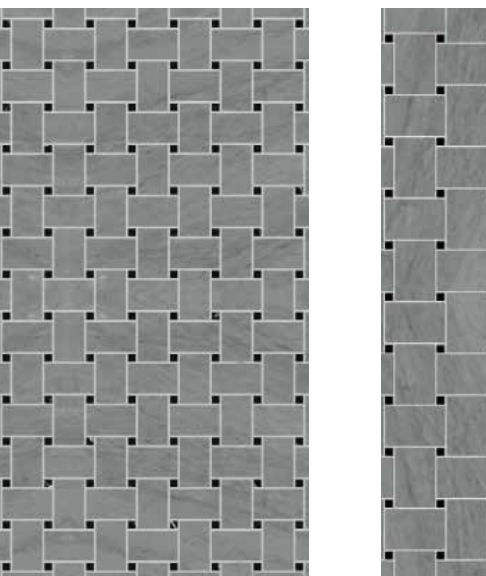
4cm x 6cm Stacked
LMMS46



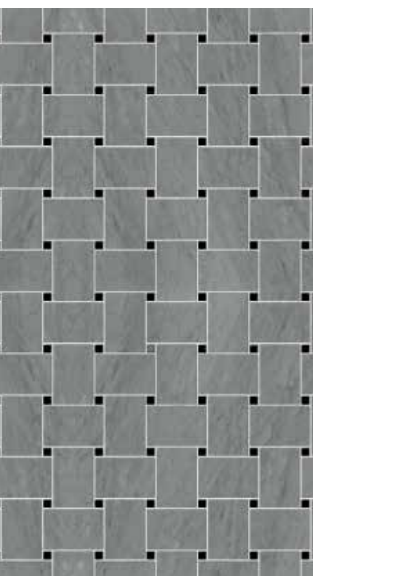
4cm x 6cm Staggered
LMSM46



2cm x 4cm Basketweave
LMMOB2

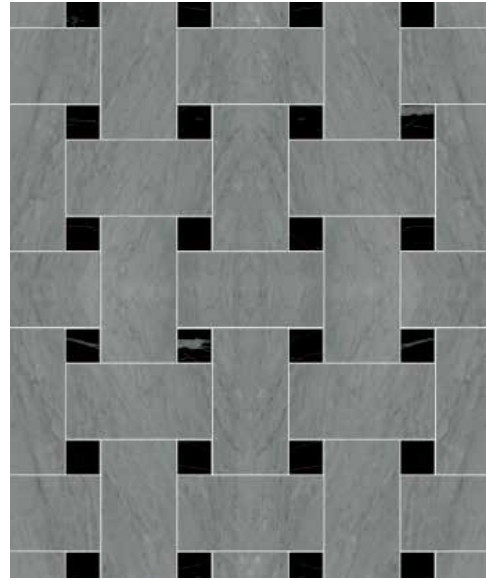


4cm x 6cm Basketweave
LMMOB4

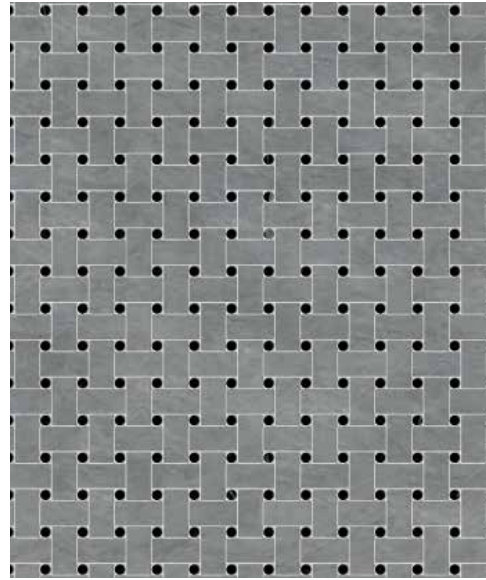


2cm x 4cm Staggered
LMSM24

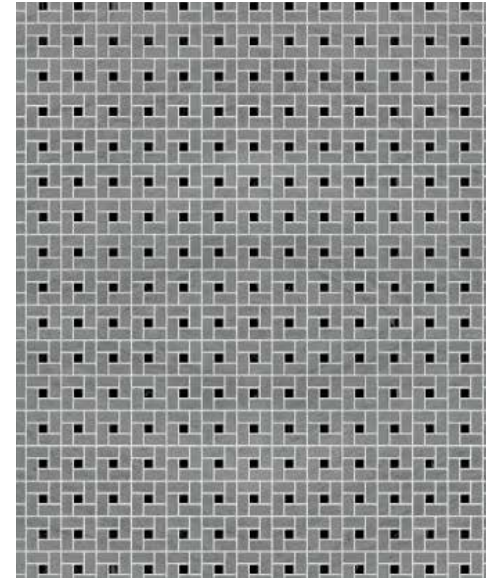
LUMINAIRE



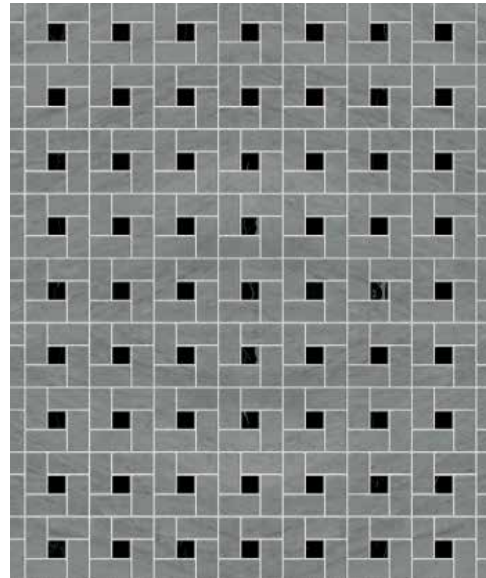
7.5cm x 15cm Basketweave
LMMOB7



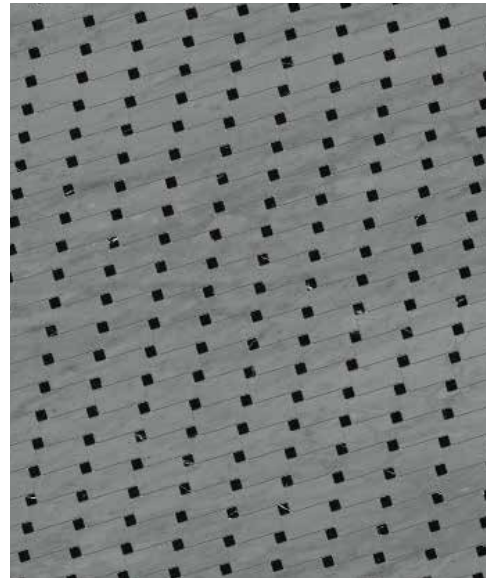
Basketdot
LMMOBD



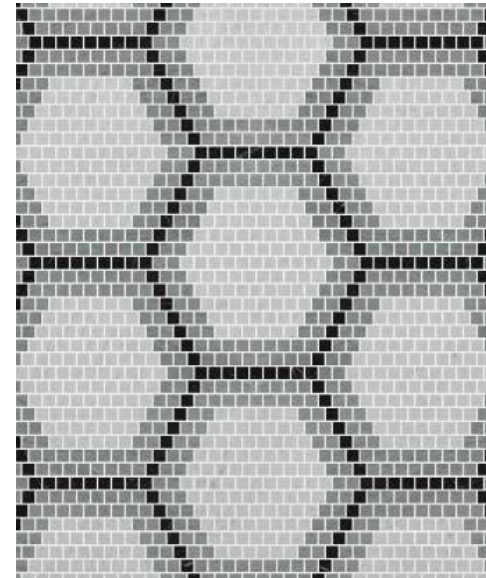
1cm x 2cm Arc D'Midi
LMMOA2



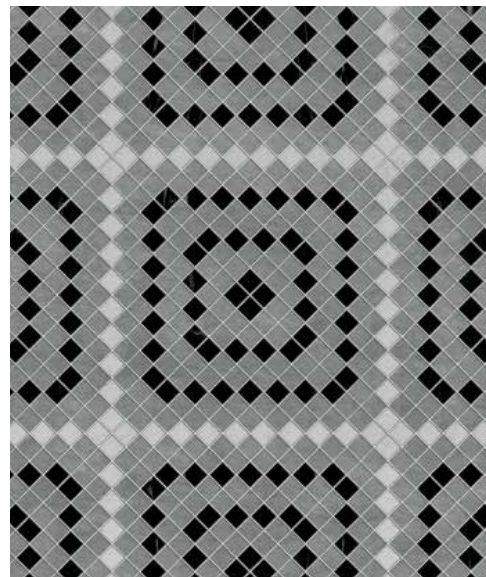
2cm x 4cm Arc D'Midi
LMMOA1



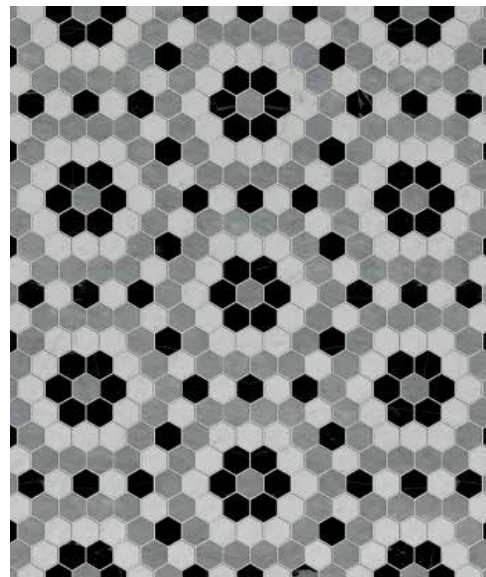
Off-set
LMMOOS



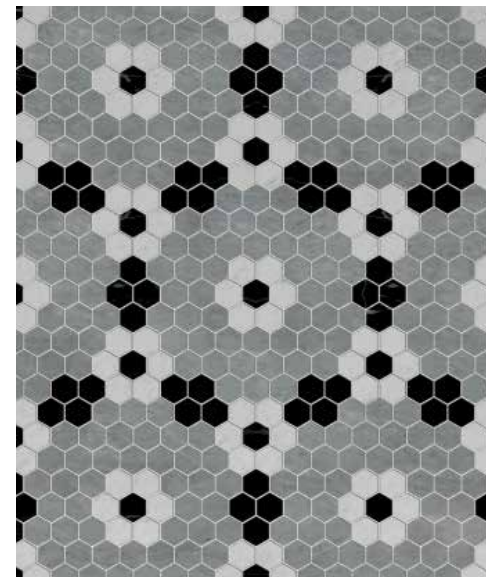
Square
LMMOSO



Sawtooth
LMMOST



Penny Quilt
LMMOPQ



Cosmo
LMMOCO

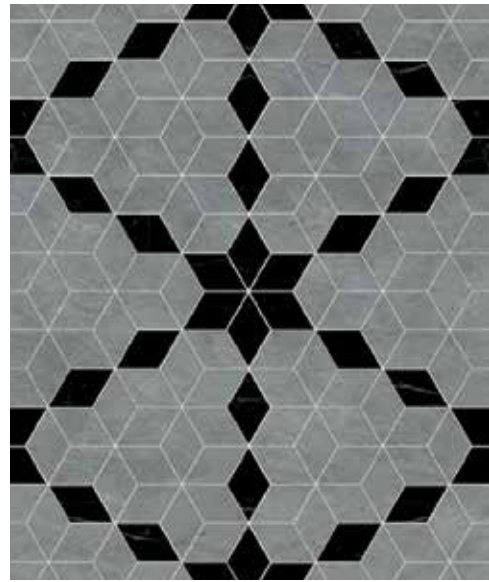


Luminaire 2cm x 4cm Basketweave Mosaic in Champagne Polished and Gascogne Blue Polished,
Universal Metal Round Two Leg Washstand in Unlacquered Brass, Flueron Classic Towel Rack and Round Waste Can,
Grano Hand Towel, Marseille Hand Towel

LUMINAIRE



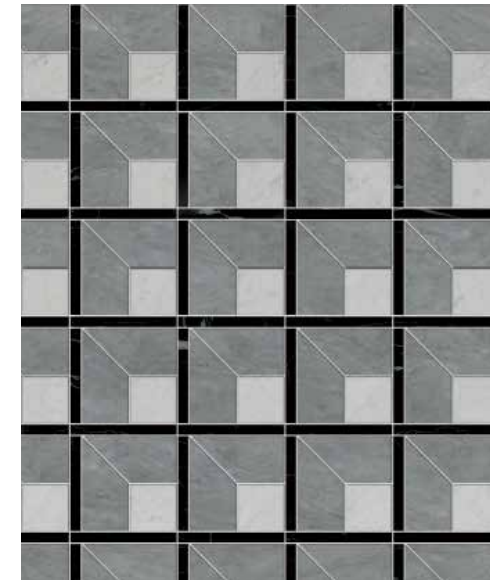
Crawley
LMMOCR



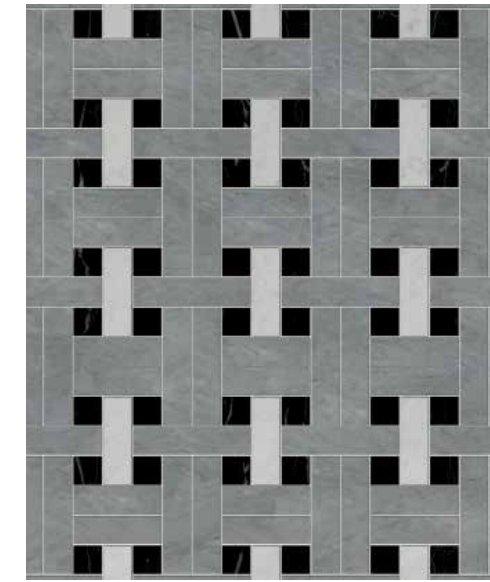
Morning Star
LMMOMS



Rubric
LMMORU



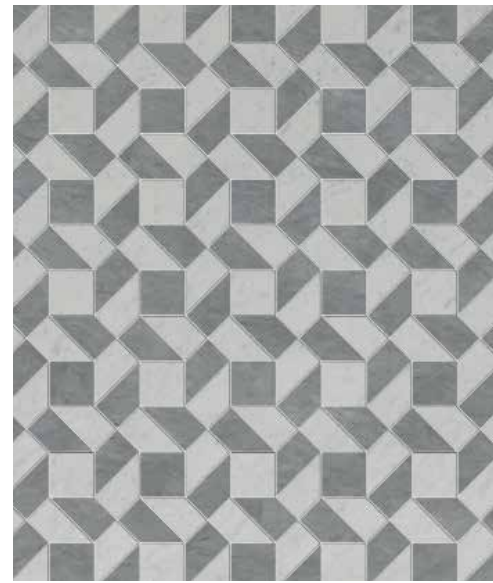
Dobby
LMMOBB



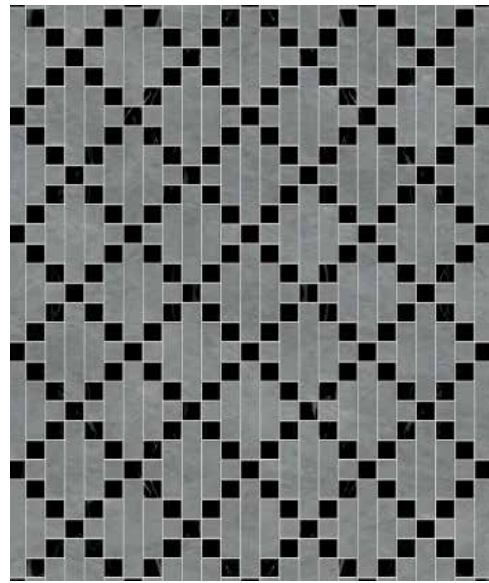
Plainweave
LMMOPW



Bolton
LMMOBO



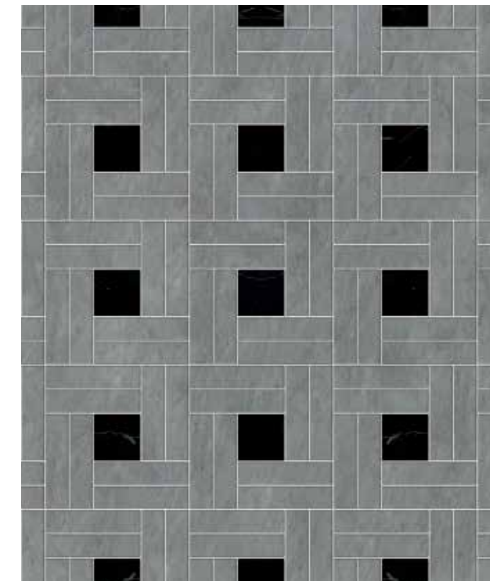
Royal
LMMORO



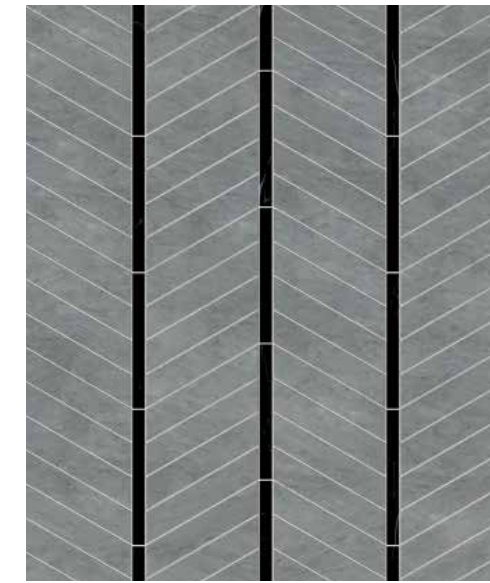
Crossweave
LMMOCW



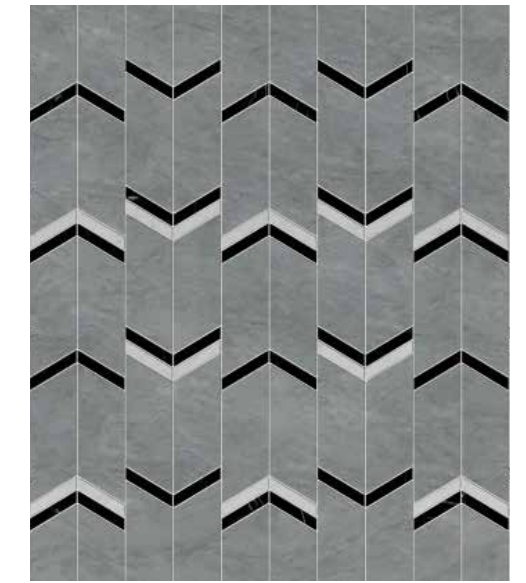
Twill
LMMOTW



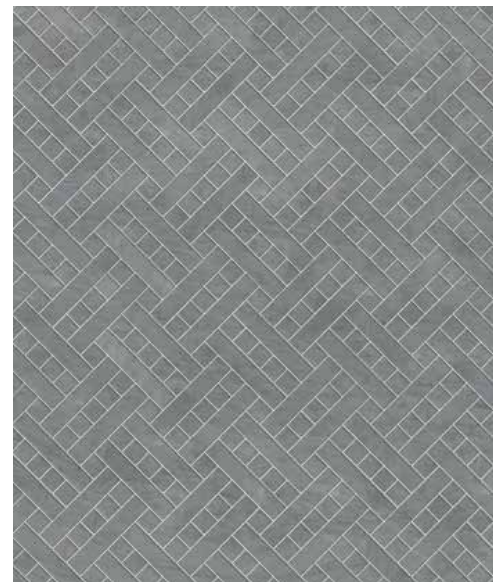
Barweave
LMMOBW



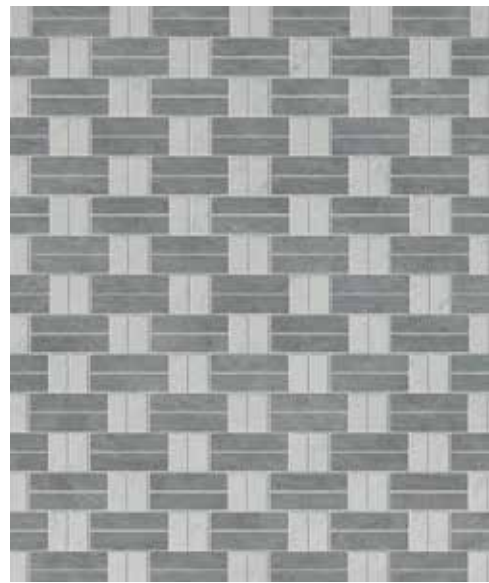
Dart
LMMODA



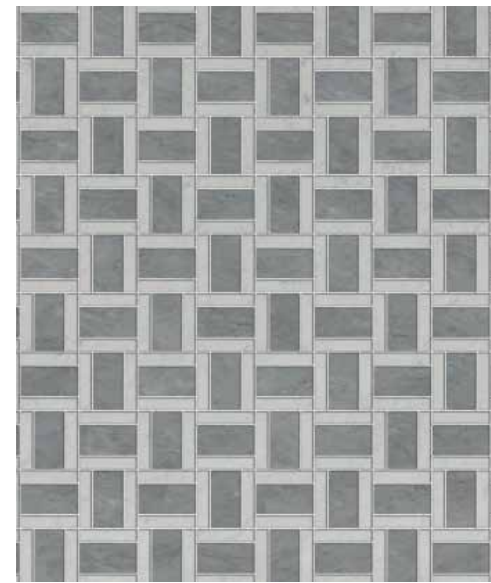
V-Groove
LMMOVG



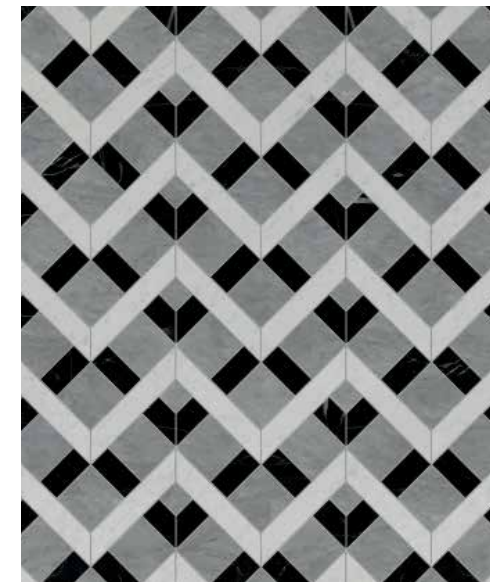
Crosshatch
LMMOCH



Oxford
LMMOOX



Pinpoint
LMMOPP



Leno
LMMOLE

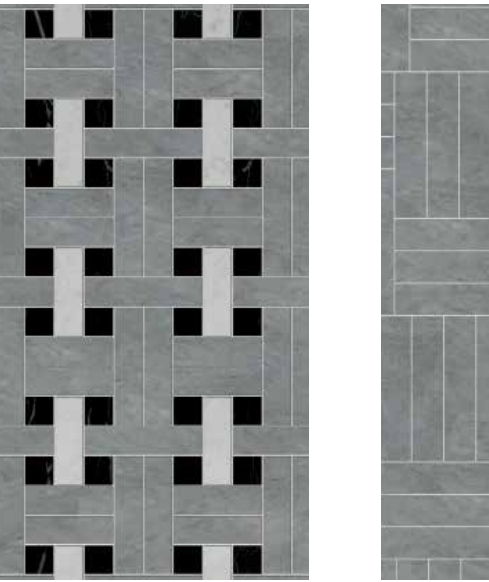


Arrow
LMMOAR



Marker
LMMOMA

LUMINAIRE



Crawley
LMMOCR



Morning Star
LMMOMS



Rubric
LMMORU



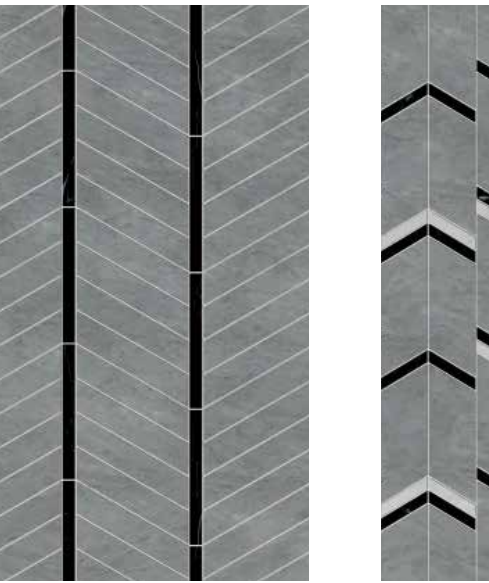
Dobby
LMMOBB



Plainweave
LMMOPW



Bolton
LMMOBO



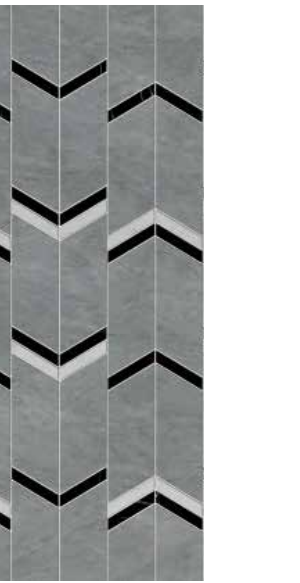
Royal
LMMORO



Crossweave
LMMOCW



Twill
LMMOTW



Barweave
LMMOBW



Dart
LMMODA



V-Groove
LMMOVG



Crosshatch
LMMOCH



Oxford
LMMOOX



Pinpoint
LMMOPP



Leno
LMMOLE

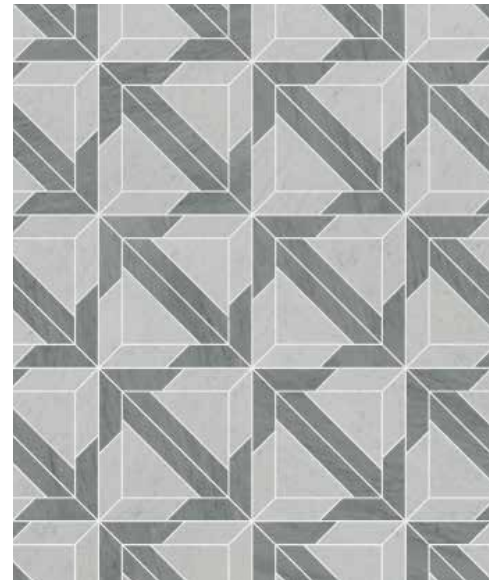


Arrow
LMMOAR

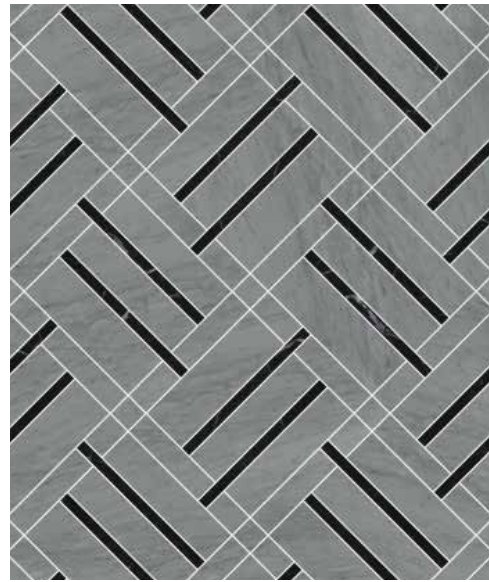


Marker
LMMOMA

LUMINAIRE



Prism
LMMOPR



Dash
LMMODS



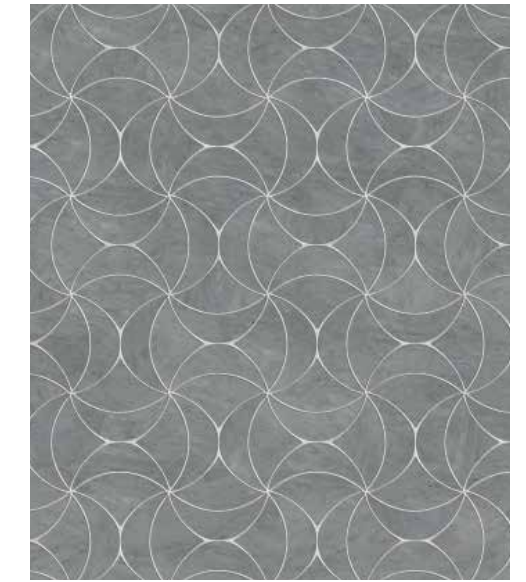
Derby
LMMODE



Flow
LMMOFL



Buckle
LMMOBU



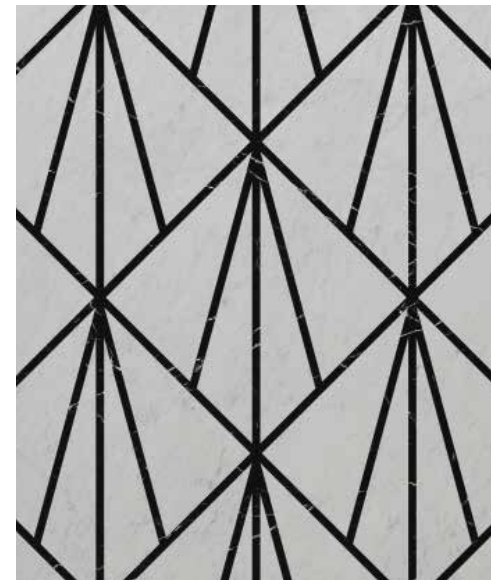
Windmill
LMMOWM



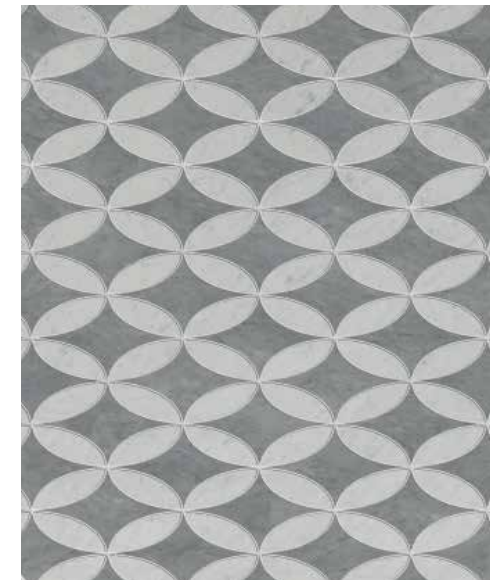
Constellation
LMMOCN



Windowpane
LMMOWP



Pyramid
LMMOPY



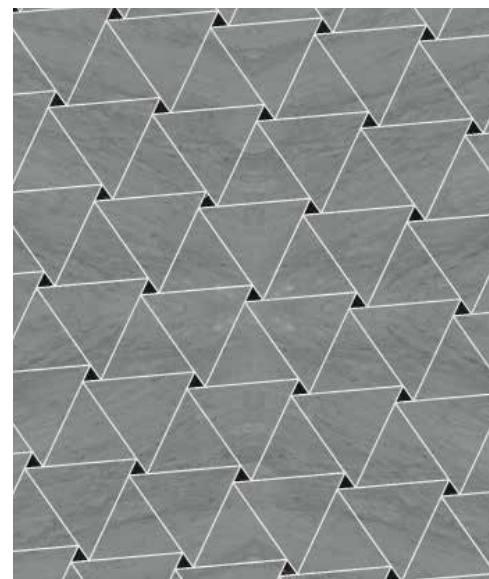
Retro
LMMORE



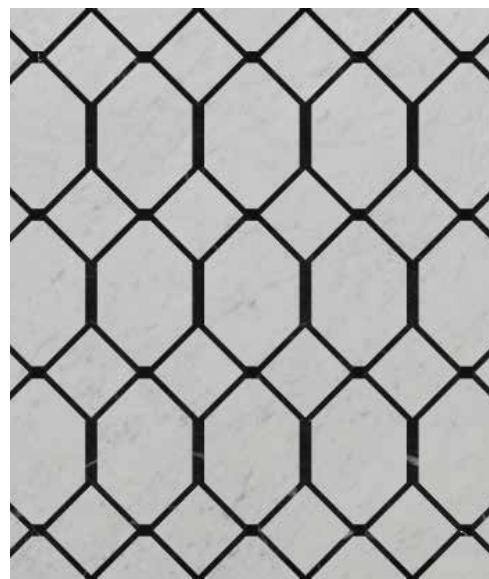
Rings
LMMORI



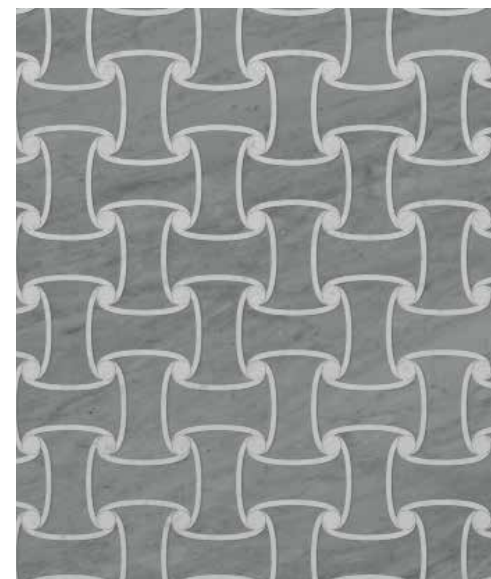
Clover
LMMOCL



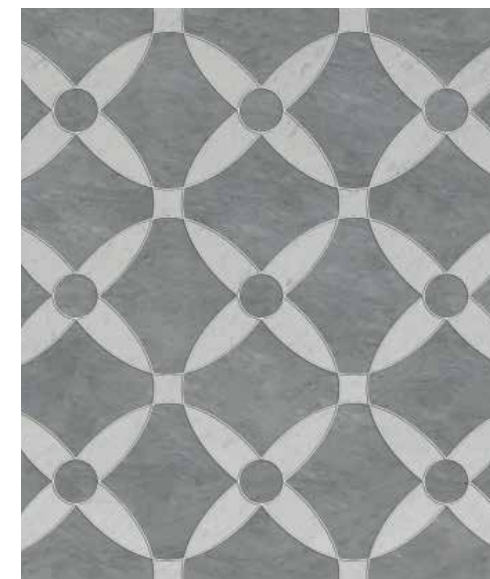
Triangle Quilt
LMMOTQ



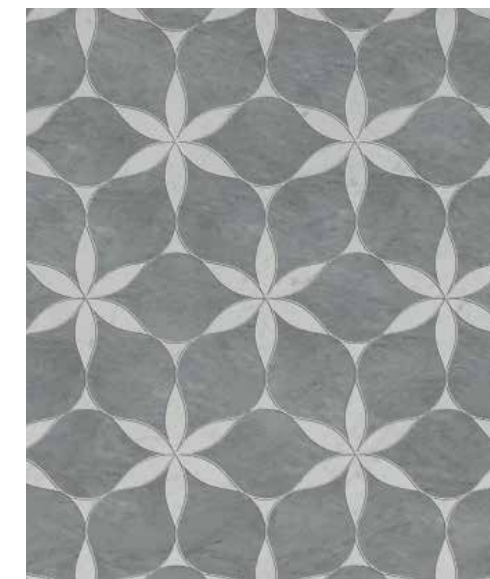
Chainlink
LMMOCK



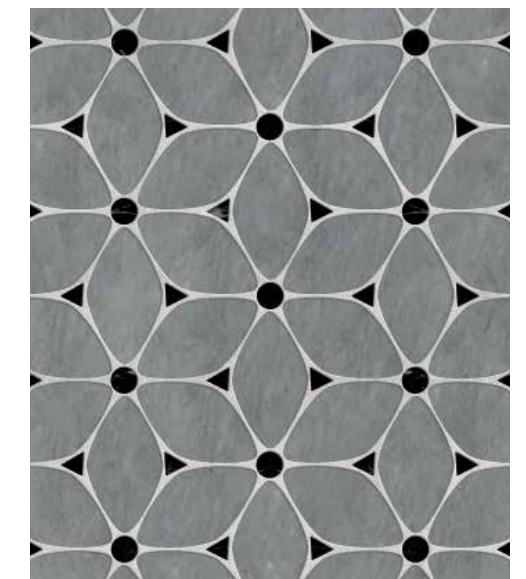
Mesh
LMMOME



Daisy
LMMODI



Petals
LMMOPE



Cellular
LMMOCE

LUMINAIRE



Flow
LMMOFL



Buckle
LMMOBU



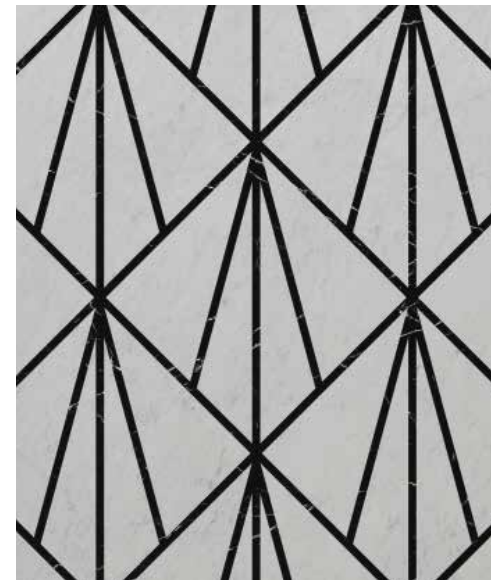
Windmill
LMMOWM



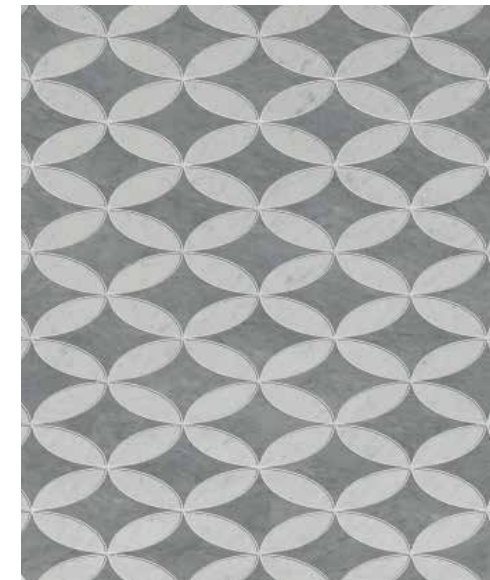
Constellation
LMMOCN



Windowpane
LMMOWP



Pyramid
LMMOPY



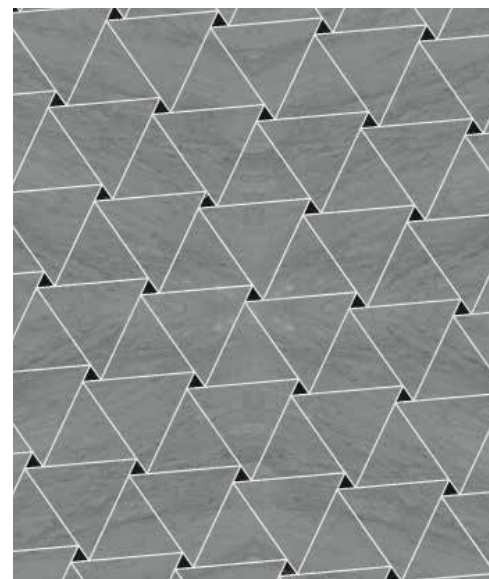
Retro
LMMORE



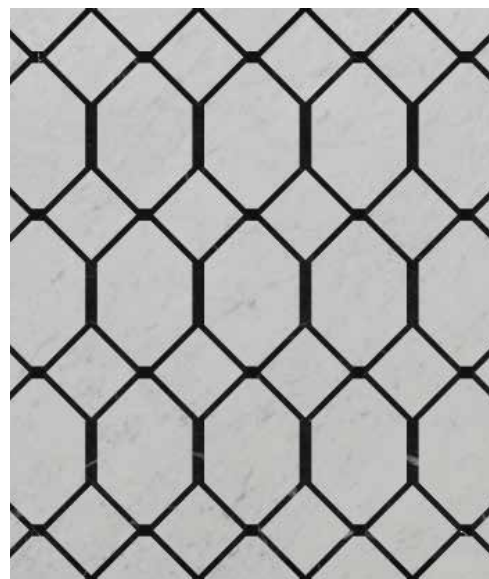
Rings
LMMORI



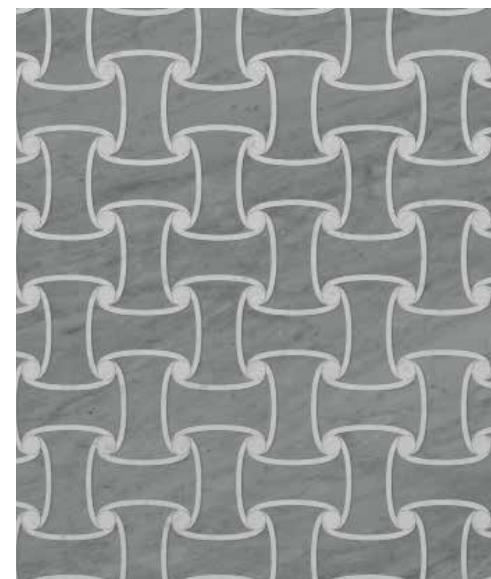
Clover
LMMOCL



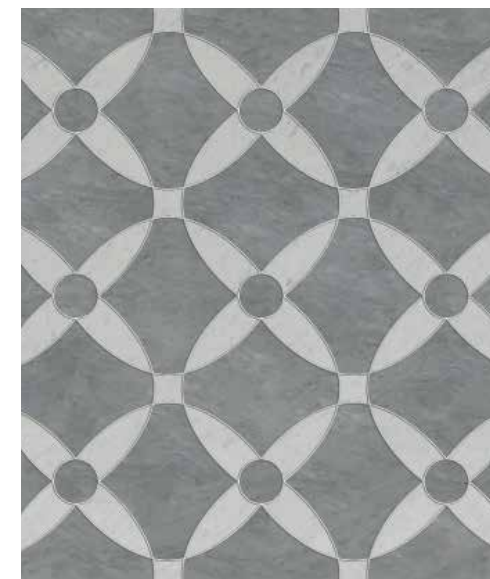
Triangle Quilt
LMMOTQ



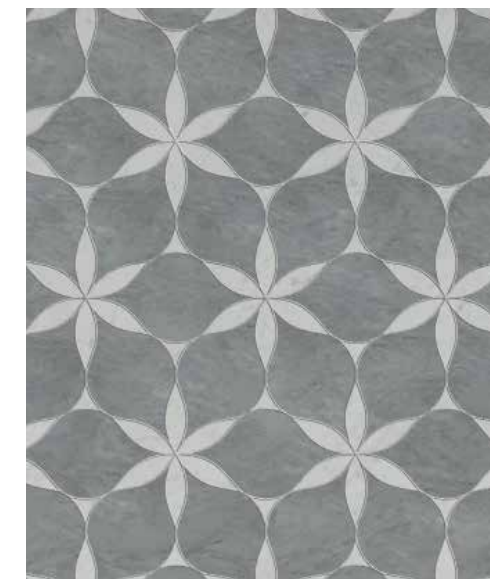
Chainlink
LMMOCK



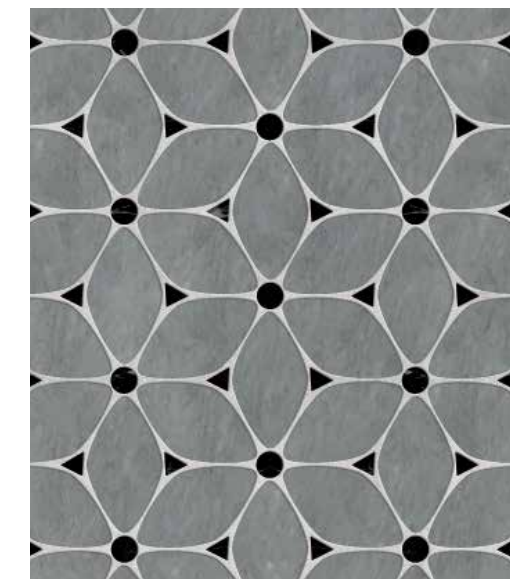
Mesh
LMMOME



Daisy
LMMODI



Petals
LMMOPE



Cellular
LMMOCE

GASCOGNE BLUE (HONED)

ARABESCATO CARRARA

NOCE

SEAGRASS

CELESTE

DARK EMERADOR (HONED)

CHAMPAGNE

SILVER (POLISHED)

CARRARA

ROSSO LAGUNA (POLISHED)

BLUE
MACAUBA

OBSIDIAN

SAINT LAURENT (POLISHED)

SILVER (HONED)

ROJO ALICANTE

STATUARY

GOLETA GRAY

JURA GRAY

ST LAURENT (HONED)

BARDIGLIO

HONEY ONYX

ROSSO LAGUNA (HONED)

CREAM TRAVERTINE

LAGOS AZUL

EMPRESS
GREEN

BOTTICINO

THASSOS

CALACATTA

MING GREEN

GASCOGNE BLUE (POLISHED)

BLUE
BAHIA

ATHENS GRAY

AFYON SUGAR

CREMA MARFIL

VERDE LUNA

LIGHT EMPERADOR

DARK EMPERADOR (POLISHED)

THE
LUMINAIRE
COLOR PALETTE

SLABS

Extraordinary materials for extraordinary applications.

Shaped by the earth over millions of years, each Waterworks slab reflects our exceptional focus on quality and service. We meticulously choose material of unmatched perfection for our clients. Often, out of hundreds of stones, only one qualifies as a Waterworks offering. Our slabs capture the full natural beauty of stone, expressing its distinct veining and movement in one long, seamless stretch.



Proprietary Stone

Each of our raw slabs is hand-selected from the world's most respected quarries to meet our exacting standards for color, texture, strength and timelessness. We also offer exclusive access to some of the rarest, most exquisite stones imaginable.



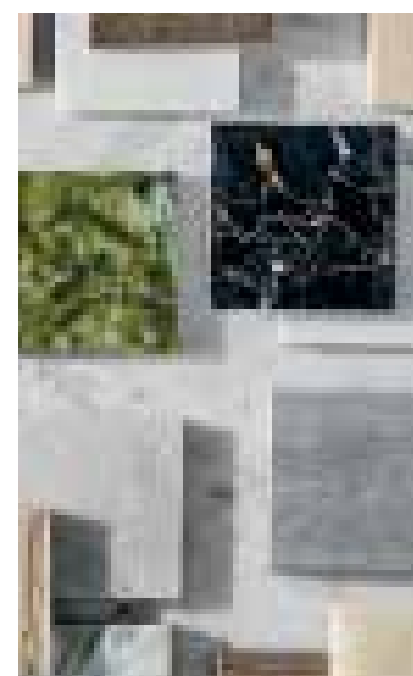
A Wealth of Applications

With everything from statement-making book-matched stone walls to elaborate curved backsplashes, we'll help you transform showers, clad entire walls, frame a fireplace, and enrich counters and floors throughout the home.



Confident Selection

Our design consultants help solidify your stone choice through a breadth of visual tools. Our digital library and lot photos allow you to identify material veining and surface activity, while our stone samples present color firsthand.



Color Palette

Our slab palette matches the vast assortment in our Keystone Collection, from barely veined neutral hues to exotic stones that marry rich color and graphic movement.



Customization Options

Bring your own touch to slabs with our bespoke capabilities. Select from sophisticated polished or subtly honed finishes and choose your slab thickness. Further customize with distinctive edging details, from a crisp 90-degree angle to classic easing effects.



Comprehensive Service

A one-stop design resource, we'll help you plan your entire bath—design aesthetic to slab selection, layout to delivery logistics—and ensure that the experience is as memorable as the beautiful end result.

KEYSTONE

Our stones are hand-selected for their variety of size, color, surface activity and durability. Explore an unparalleled range of patterns, tones, textures and finishes—all curated to set the foundation of an inspired space.



Keystone Statuary Polished Fabricated Slab

KEYSTONE



Venato
 FIELD TILE: 6" x 12"^{PH}, 12" x 24"^{PH}, 6" x 30"^{PH},
 24" x 36"^{PH}, 12" x 12"^{PH}, 18" x 18"^{PH}, 24" x 24"^{PH}
 MOSAIC: 2cm Stacked^{PH}
 MOLDINGS: Pencil Liner $\frac{5}{8}$ " x 12"^{PH}, "A" Rail $1\frac{3}{4}$ " x 12"^{PH}
 Standard Base 5" x 12"^{PH}
 SLABS: 2cm^{PH}, 3cm^{PH}



Imperial Danby
 FIELD TILE: 6" x 18"^{PH}, 18" x 18"^{PH}
 MOSAIC: 2.5cm Hexagon^{PH}
 MOLDINGS: Stowe Rail $1\frac{1}{8}$ " x 18"^{PH},
 Stowe Base 6" x 18"^{PH}
 SLABS: 2cm^{PH}, 3cm^{PH}, 5cm^{PH}



Petronelli
 FIELD TILE: 12" x 24"^H, 12" x 12"^{PH}
 MOSAIC: 2.5cm Stacked^H, 2.5cm x 10cm Herringbone^P
 MOLDINGS: Square Liner $\frac{3}{4}$ " x 12"^{PH}



Plumeria
 FIELD TILE: 12" x 24"^P
 SLABS: 2cm^{PH}



Cielo
 FIELD TILE: 12" x 24"^P
 SLABS: 2cm^{PH}, 3cm^{PH}



Savoy
 FIELD TILE: 12" x 24"^P, 12" x 12"^P
 MOSAIC: 2cm Stacked^P
 SLABS: 2cm^{PH}, 3cm^{PH}



Thassos Select
 FIELD TILE: 3" x 6"^{PH}, 6" x 12"^{PH}, 12" x 12"^{PH}, 18" x 18"^{PH}
 MOSAIC: 2cm Stacked^{PT}, $\frac{1}{2}$ " x $1\frac{1}{4}$ " Staggered^P,
 3cm x 5cm Basketweave^P
 MOLDINGS: Pencil Liner $\frac{5}{8}$ " x 12"^{PH}, "B" Rail $1\frac{3}{4}$ " x 12"^{PH}
 Standard Base 5" x 12"^{PH}
 SLABS: 2cm^{PH}, 3cm^{PH}



Calacatta
 FIELD TILE: 3" x 6"^{PH}, 6" x 12"^{PH}, 12" x 24"^{PH},
 24" x 36"^{PH}, 12" x 12"^{PH}, 18" x 18"^{PH}
 MOSAIC: 2cm Stacked^{PH}, $\frac{1}{2}$ " x $\frac{3}{4}$ " Staggered^{PH},
 2.5cm Hexagon^{PH}, 3" Hexagon^{PH},
 3cm x 5cm Basketweave^{PH}, 1.5cm Hand Clipped^H
 MOLDINGS: Pencil Liner $\frac{5}{8}$ " x 12"^{PH}, "A" Rail $1\frac{3}{4}$ " x 12"^{PH}
 Standard Base 5" x 12"^{PH}
 SLABS: 2cm^{PH}, 3cm^{PH}, 5cm^P



Aurora
 FIELD TILE: 6" x 12"^{PH}, 12" x 24"^{PH}, 12" x 12"^{PH}
 MOSAIC: 2cm Stacked^{PH}
 MOLDINGS: Pencil Liner $\frac{5}{8}$ " x 12"^{PH}, "A" Rail $1\frac{3}{4}$ " x 12"^{PH}
 Standard Base 5" x 12"^{PH}
 SLABS: 2cm^{PH}, 3cm^{PH}



Zephyr
 FIELD TILE: 3" x 6"^P, 6" x 24"^P, 12" x 24"^P, 12" x 12"^P
 MOSAIC: 2.5cm Stacked^P, Random Stripe^P
 MOLDINGS: Pencil Liner $\frac{5}{8}$ " x 12"^P, "A" Rail $1\frac{3}{4}$ " x 12"^P
 SLABS: 2cm^{PH}, 3cm^P



Silver Lining
 FIELD TILE: 12" x 24"^H, 6" x 36"^H, 18" x 36"^H
 MOSAIC: 2cm Stacked^H
 MOLDINGS: Empire Rail $\frac{3}{4}$ " x 12"^H
 SLABS: 2cm^H



Silver Quartzite
 FIELD TILE: 12" x 24"^H
 SLABS: 2cm^P



Agatha
 FIELD TILE: 6" x 12"^{PH}, 12" x 24"^{PH}, 12" x 12"^{PH}
 MOSAIC: 2cm Stacked^{PH}
 MOLDINGS: Pencil Liner $\frac{5}{8}$ " x 12"^{PH}, "A" Rail $1\frac{3}{4}$ " x 12"^{PH}
 Standard Base 5" x 12"^{PH}
 SLABS: 2cm^{PH}, 3cm^{PH}



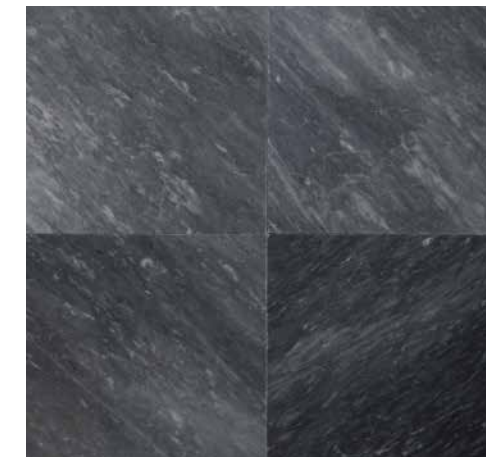
Statuary
 FIELD TILE: 3" x 6"^{PH}, 6" x 12"^{PH}, 12" x 24"^{PH},
 12" x 12"^{PH}, 18" x 18"^{PH}
 MOSAIC: 2cm Stacked^{PH}, $\frac{1}{2}$ " x $\frac{3}{4}$ " Staggered^{PH},
 2.5cm Hexagon^{PH}, 3" Hexagon^{PH}
 MOLDINGS: Pencil Liner $\frac{5}{8}$ " x 12"^{PH}, "A" Rail $1\frac{3}{4}$ " x 12"^{PH}
 Standard Base 5" x 12"^{PH}
 SLABS: 2cm^{PH}, 3cm^{PH}



Carrara
 FIELD TILE: 3" x 6"^{PH}, 6" x 12"^{PH}, 3" x 16"^{PH}, 12" x 24"^{PH},
 12" x 12"^{PH}, 18" x 18"^{PH}, 12" Hexagon^H
 MOSAIC: 2cm Stacked^{PH}, $\frac{1}{2}$ " x $1\frac{1}{4}$ " Staggered^P,
 $1\frac{1}{8}$ " x $3\frac{3}{4}$ " Staggered^{PH}, 1.5cm x 3cm Herringbone^P,
 3cm x 6cm Herringbone^P, 2.5cm Hexagon^{PH},
 2" Hexagon^{PH}, 3" Hexagon^{PH}, 3cm x 5cm Basketweave^P,
 1.5cm Hand Clipped^H
 MOLDINGS: Pencil Liner $\frac{5}{8}$ " x 12"^{PH}, "A" Rail $1\frac{3}{4}$ " x 12"^{PH}
 Standard Base 5" x 12"^{PH}
 SLABS: 2cm^{PH}, 3cm^{PH}, 5cm^{PH}



Palissandro
 FIELD TILE: 12" x 24"^P
 MOSAIC: 2cm Stacked^P
 MOLDINGS: Empire Rail $\frac{3}{4}$ " x 12"^P
 SLABS: 2cm^P, 3cm^P



Bardiglio Dark
 FIELD TILE: 6" x 12"^{PH}, 12" x 24"^{PH}, 6" x 30"^{PH},
 24" x 36"^{PH}, 12" x 12"^{PH}, 18" x 18"^{PH}, 24" x 24"^{PH},
 12" Hexagon^H
 MOSAIC: 2cm Stacked^H
 MOLDINGS: Pencil Liner $\frac{5}{8}$ " x 12"^{PH}, "A" Rail $1\frac{3}{4}$ " x 12"^{PH}
 Standard Base 5" x 12"^{PH}
 SLABS: 2cm^{PH}, 3cm^{PH}



Aran Gray
 FIELD TILE: 12" x 24"^H, 12" x 12"^H
 SLABS: 2cm^H, 3cm^H

Photos are representative in color. Sizes are nominal and may vary.
 Please request samples, natural variation can occur.
 See pages 88-91 for mosaics, moldings and terminology.

KEYSTONE



Plumeria
 FIELD TILE: 12" x 24"^P
 SLABS: 2cm^{PH}



Cielo
 FIELD TILE: 12" x 24"^P
 SLABS: 2cm^{PH}, 3cm^{PH}



Savoy
 FIELD TILE: 12" x 24"^P, 12" x 12"^P
 MOSAIC: 2cm Stacked^P
 SLABS: 2cm^{PH}, 3cm^{PH}



Zephyr
 FIELD TILE: 3" x 6"^P, 6" x 24"^P, 12" x 24"^P, 12" x 12"^P
 MOSAIC: 2.5cm Stacked^P, Random Stripe^P
 MOLDINGS: Pencil Liner $\frac{5}{8}$ " x 12"^P, "A" Rail $1\frac{3}{4}$ " x 12"^P
 SLABS: 2cm^{PH}, 3cm^P



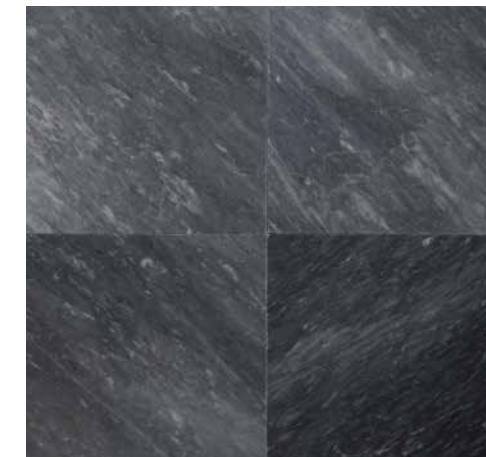
Silver Lining
 FIELD TILE: 12" x 24"^H, 6" x 36"^H, 18" x 36"^H
 MOSAIC: 2cm Stacked^H
 MOLDINGS: Empire Rail $\frac{3}{4}$ " x 12"^H
 SLABS: 2cm^H



Silver Quartzite
 FIELD TILE: 12" x 24"^H
 SLABS: 2cm^P



Palissandro
 FIELD TILE: 12" x 24"^P
 MOSAIC: 2cm Stacked^P
 MOLDINGS: Empire Rail $\frac{3}{4}$ " x 12"^P
 SLABS: 2cm^P, 3cm^P

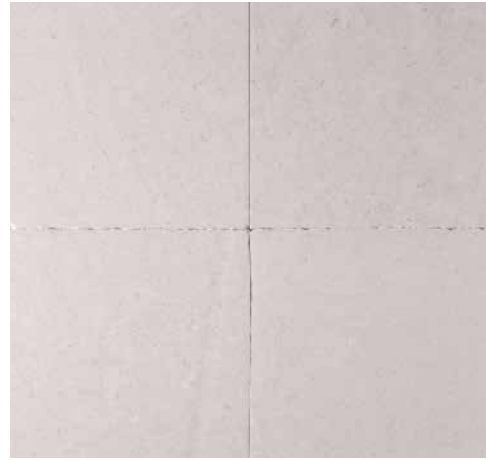


Bardiglio Dark
 FIELD TILE: 6" x 12"^{PH}, 12" x 24"^{PH}, 6" x 30"^{PH},
 24" x 36"^{PH}, 12" x 12"^{PH}, 18" x 18"^{PH}, 24" x 24"^{PH},
 12" Hexagon^H
 MOSAIC: 2cm Stacked^H
 MOLDINGS: Pencil Liner $\frac{5}{8}$ " x 12"^{PH}, "A" Rail $1\frac{3}{4}$ " x 12"^{PH}
 Standard Base 5" x 12"^{PH}
 SLABS: 2cm^{PH}, 3cm^{PH}



Aran Gray
 FIELD TILE: 12" x 24"^H, 12" x 12"^H
 SLABS: 2cm^H, 3cm^H

KEYSTONE



Piedmont Blonde
FIELD TILE: 8" x 16" ^{PH}, 16" x 24" ^{PH}, 8" x 8" ^{PH}, 16" x 16" ^{PH}
SLABS: 2cm ^H



Vanilla Cream
FIELD TILE: 6" x 12" ^{PH}, 12" x 24" ^{PH}, 12" x 12" ^{PH}, 16" x 16" ^{PH}
MOSAIC: 2cm Stacked ^{PH}
MOLDINGS: Pencil Liner ^{PH} 5/8" x 12" ^{PH}, "A" Rail 1 3/4" x 12" ^{PH}
Standard Base 5" x 12" ^{PH}
SLABS: 2cm ^{PH}, 3cm ^{PH}



Crema D'Orcia
FIELD TILE: 12" x 12" ^H, 12" x 24"
MOLDINGS: Bamboo Rail 1 3/4" x 12" ^H,
Bamboo Base 4 3/4" x 12" ^H



White Onyx
FIELD TILE: 12" x 12" ^{PH}
MOSAIC: 2.5cm Stacked ^{PH}
MOLDINGS: Pencil Liner ^{PH} 5/8" x 12" ^{PH}, "A" Rail 1 3/4" x 12" ^{PH}
Standard Base 5" x 12" ^{PH}
SLABS: 2cm ^P, 3cm ^H



Alpaca
FIELD TILE: 10" x 20" ^H
MOSAIC: 2cm Stacked ^H
MOLDINGS: Empire Rail 3/4" x 20" ^H
SLABS: 2cm ^H, 3cm ^H



Silver Cloud
FIELD TILE: 2 1/2" x 20" ^H, 5" x 20" ^H, 10" x 20" ^H
MOSAIC: 2cm Stacked ^H
MOLDINGS: Empire Rail 3/4" x 20" ^H
SLABS: 2cm ^H, 3cm ^H



Amaro
FIELD TILE: 12" x 24" ^P
SLABS: 2cm ^{PH}, 3cm ^{PH}



Cataldo
FIELD TILE: 12" x 24" ^P
MOSAIC: 2cm Stacked ^P
MOLDINGS: Empire Rail 3/4" x 12" ^P



Cirrus
FIELD TILE: 6" x 12" ^{PH}, 12" x 24" ^{PH}, 12" x 12" ^{PH}
MOSAIC: 2cm Stacked ^{PH}
SLABS: 2cm ^{PH}, 3cm ^{PH}



Baja
FIELD TILE: 12" x 24" ^{PH}, 12" x 12" ^{PH}
SLABS: 2cm ^{PH}



Monterey
FIELD TILE: 12" x 24" ^H
MOSAIC: 2.5cm Stacked ^{FT}
MOLDINGS: Empire Rail 5/8" x 12" ^F
SLABS: 2cm ^F, 3cm ^F



Thunder Cloud **DISCONTINUED**



Silk Georgette
FIELD TILE: 12" x 24" ^H
SLABS: 2cm ^{PH}



Carlotta
FIELD TILE: 12" x 24" ^H
SLABS: 2cm ^P



Arrowroot
FIELD TILE: 6" x 12" ^{PH}, 3" x 16" ^H, 12" x 24" ^{PH},
12" x 12" ^{PH}, 16" x 16" ^{PH}
MOSAIC: 2cm Stacked ^{PH}, 1/2" x 1 1/4" Staggered ^P,
1 1/8" x 3 3/4" Staggered ^T, 1.5cm x 3cm Herringbone ^{PT},
3cm x 6cm Herringbone ^P, 2.5cm Hexagon ^{PT},
2" Hexagon ^P, 3cm x 5cm Basketweave ^P
MOLDINGS: Pencil Liner ^{PH} 5/8" x 12" ^{PH}, "A" Rail 1 3/4" x 12" ^{PH}
Standard Base 5" x 12" ^{PH}
SLABS: 2cm ^{PH}, 3cm ^{PH}



Raven
FIELD TILE: 10" x 20" ^H
MOSAIC: 2cm Stacked ^H
MOLDINGS: Empire Rail 3/4" x 20" ^H
SLABS: 2cm ^H, 3cm ^H



Vulcan
FIELD TILE: 12" x 24" ^H



Basalt
FIELD TILE: 6" x 12" ^H, 3" x 16" ^H, 12" x 24" ^H, 12" x 12" ^H,
16" x 16" ^H
MOSAIC: 2cm Stacked ^H, 2" Stacked ^H, 2.5cm Hexagon ^H,
3" Hexagon ^H
MOLDINGS: Empire Rail 1/2" x 12" ^H,
Standard Base 5" x 12" ^H
SLABS: 2cm ^H, 3cm ^H

KEYSTONE

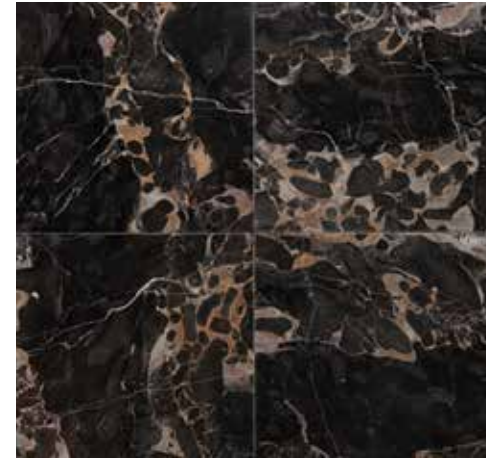
KEYSTONE



Piedmont
FIELD TILE: 8" x 16"^H, 16" x 24"^H, 8" x 8"^H,
16" x 16"^H, 24" x 24"^H
MOSAIC: 2cm Stacked^H
MOLDINGS: Empire Rail 3/4" x 16"^H
SLABS: 2cm^H, 3cm^H



Nero Marquina
FIELD TILE: 6" x 12"^{PH}, 12" x 12"^{PH}
MOSAIC: 2cm Stacked^{PH}, 2.5cm Stacked^T
MOLDINGS: Pencil Liner 5/8" x 12"^{PH}, "A" Rail 1 3/4" x 12"^{PH}
Standard Base 5" x 12"^{PH}
SLABS: 2cm^{PH}, 3cm^{PH}



Portoro Gold
FIELD TILE: 12" x 12"^P
SLABS: 2cm^P



Carrara Antiqued
FIELD TILE: 10" x 16"^A, 16" x 16"^A
SLABS: 2cm^A



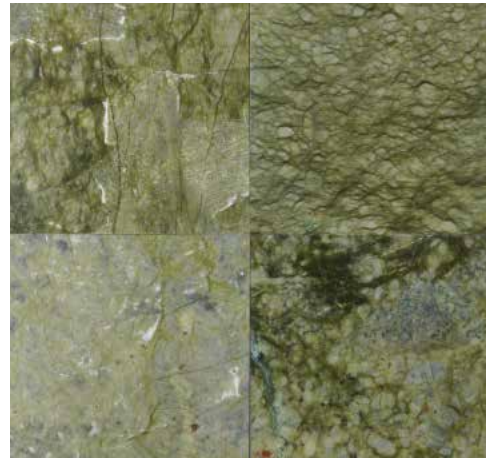
Carrara Restored
FIELD TILE: 10" x 16"^R, 16" x 16"^R
SLABS: 2cm^R



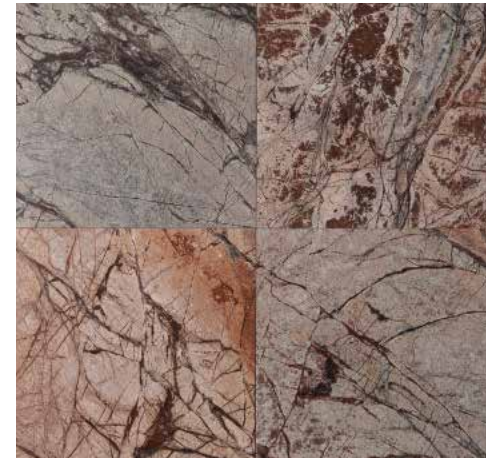
Ash Antiqued
FIELD TILE: 10" x 16"^A, 16" x 16"^A
SLABS: 2cm^A



Sultana
FIELD TILE: 12" x 24"^P
SLABS: 2cm^P



Veridian
FIELD TILE: 12" x 12"^P
MOSAIC: 1.5cm Stacked^{PT}
MOLDINGS: "A" Rail 1 3/4" x 12"^P



Redwood
FIELD TILE: 12" x 12"^P
MOSAIC: 1.5cm Stacked^P
MOLDINGS: Pencil Liner 5/8" x 12"^P



Ash Restored
FIELD TILE: 10" x 16"^R, 16" x 16"^R
SLABS: 2cm^R



Biscuit Antiqued
FIELD TILE: 10" x 16"^A, 16" x 16"^A
SLABS: 2cm^A



Biscuit Restored
FIELD TILE: 10" x 16"^R, 16" x 16"^R
SLABS: 2cm^R



Dearborn
FIELD TILE: 3" x 12"^P
MOSAIC: Chevron^P, Diamond^P
SLABS: 2cm^P, 3cm^P



Adair
FIELD TILE: 3" x 12"^P
MOSAIC: Chevron^P, Diamond^P



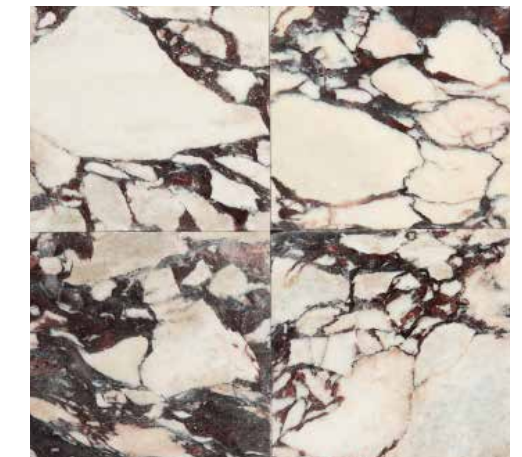
Carlotta Brushed Antiqued
FIELD TILE: 4" x 18"^{BA}



Kirby Antiqued
FIELD TILE: 10" x 16"^A, 16" x 16"^A
SLABS: 2cm^A



Kirby Restored
FIELD TILE: 10" x 16"^R, 16" x 16"^R
SLABS: 2cm^R



Prunella Restored
FIELD TILE: 10" x 16"^R, 16" x 16"^R
SLABS: 2cm^R

KEYSTONE



Carrara Antiqued
FIELD TILE: 10" x 16"^A, 16" x 16"^A
SLABS: 2cm^A



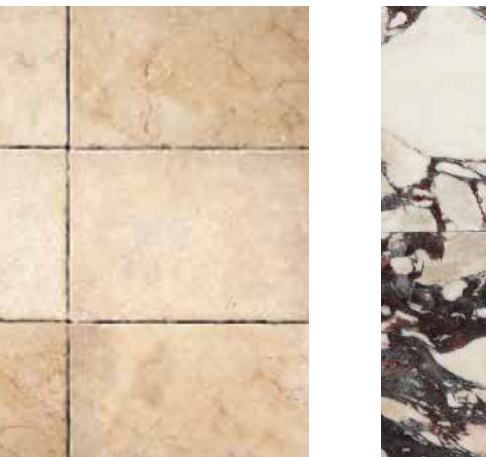
Carrara Restored
FIELD TILE: 10" x 16"^R, 16" x 16"^R
SLABS: 2cm^R



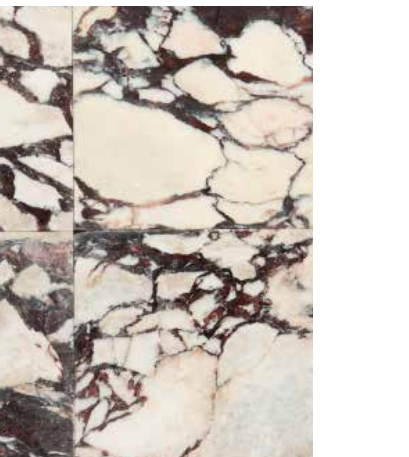
Ash Restored
FIELD TILE: 10" x 16"^R, 16" x 16"^R
SLABS: 2cm^R



Biscuit Antiqued
FIELD TILE: 10" x 16"^A, 16" x 16"^A
SLABS: 2cm^A



Kirby Antiqued
FIELD TILE: 10" x 16"^A, 16" x 16"^A
SLABS: 2cm^A



Prunella Restored
FIELD TILE: 10" x 16"^R, 16" x 16"^R
SLABS: 2cm^R

KEYSTONE



Dakota Antiqued
FIELD TILE: 10" x 16" ^A, 16" x 16" ^A
SLABS: 2cm ^A



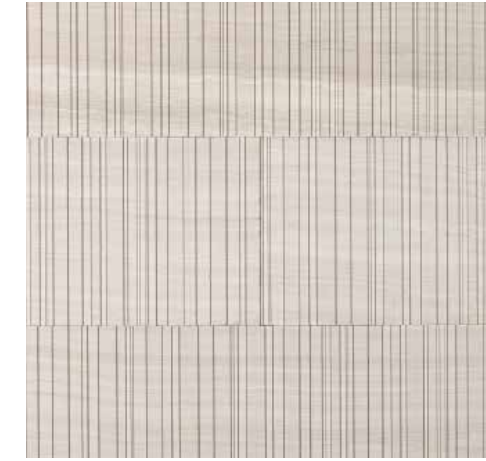
Dakota Restored
FIELD TILE: 10" x 16" ^R, 16" x 16" ^R
SLABS: 2cm ^R



Basalt Brushed & Flamed
FIELD TILE: 16" x 24" ^{BF}



Basalt Combed
FIELD TILE: 12" x 24" ^C



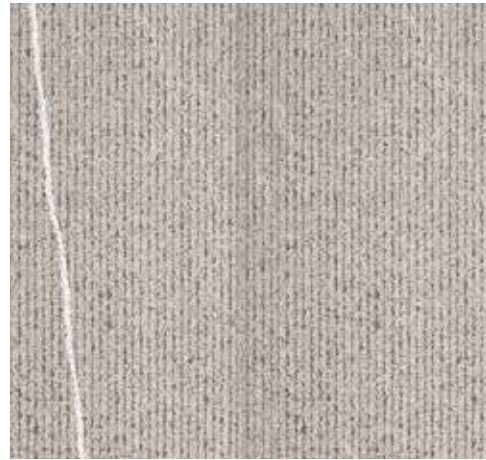
Silk Georgette Glyphic
FIELD TILE: 8" x 24" ^G



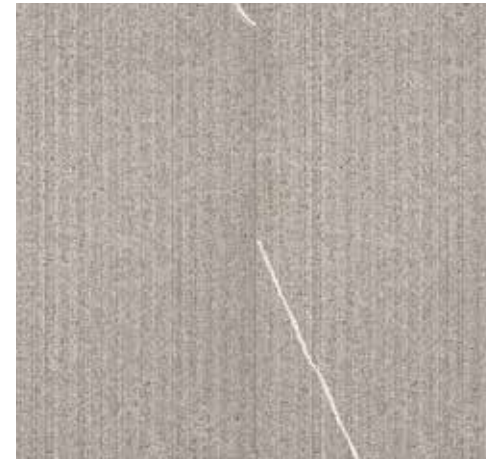
Vulcan Glyphic
FIELD TILE: 8" x 24" ^G



Monterey Flamed
FIELD TILE: 12" x 24" ^F



Monterey Fabric
FIELD TILE: 12" x 24" ^{FF}



Monterey Combed
FIELD TILE: 12" x 24" ^C



Crema D'Orcia Bamboo
FIELD TILE: 11 1/2" x 23" ^B



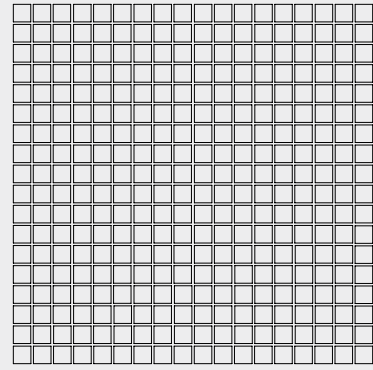
Carrara Domino
FIELD TILE: 4 1/2" x 7 3/4"



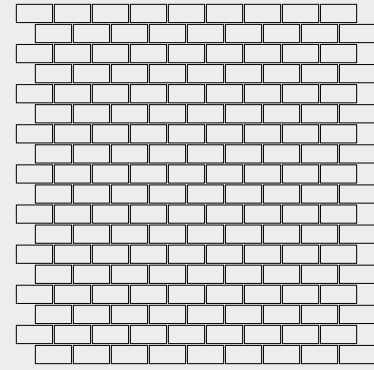
Vulcan Domino
FIELD TILE: 4 1/2" x 7 3/4"

KEYSTONE

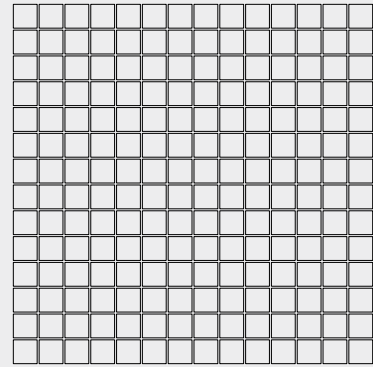
KEYSTONE MOSAICS



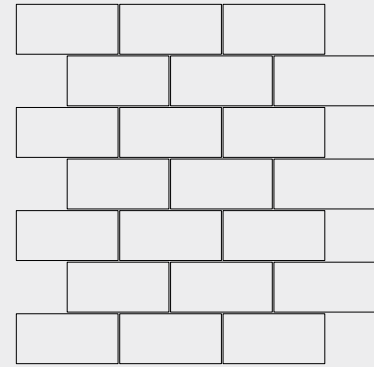
1.5cm Stacked
KSMS15



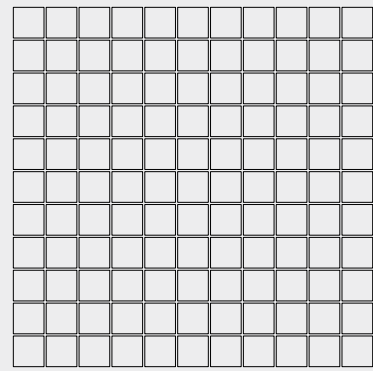
1/2" x 1 1/4" Staggered
KSSM12



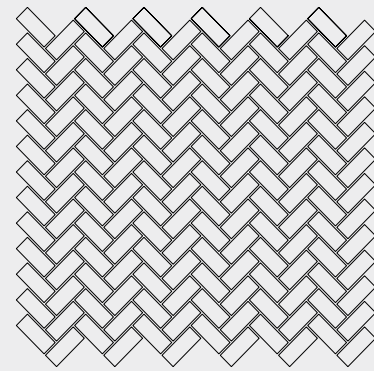
2cm Stacked
KSMS02



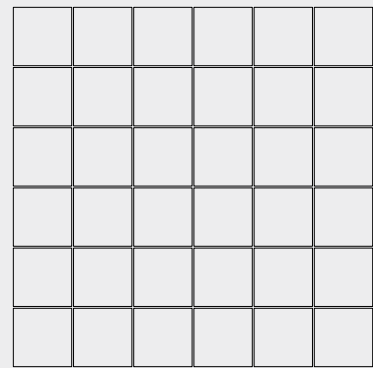
1 1/8" x 3 3/4" Staggered
KSSM02



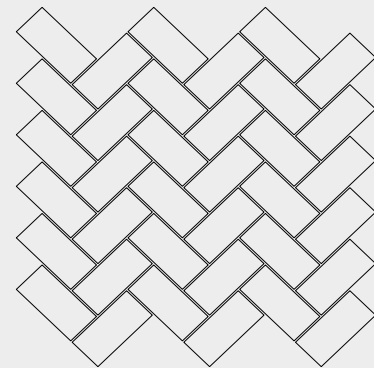
2.5cm Stacked
KSMS11



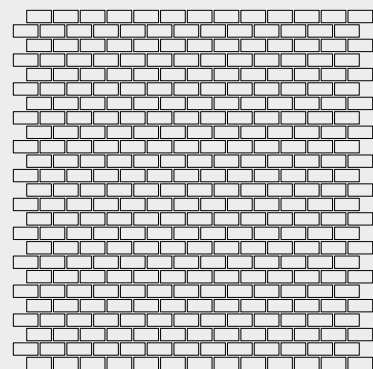
1.5cm x 3cm Herringbone
KSMOHB



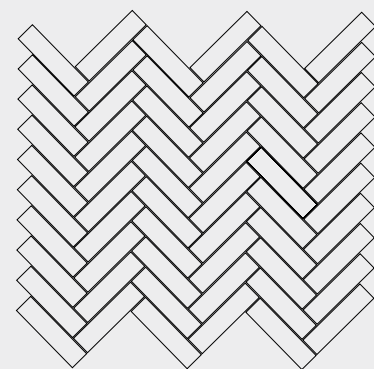
2" Stacked
KSMS22



3cm x 6cm Herringbone
KSMOH3

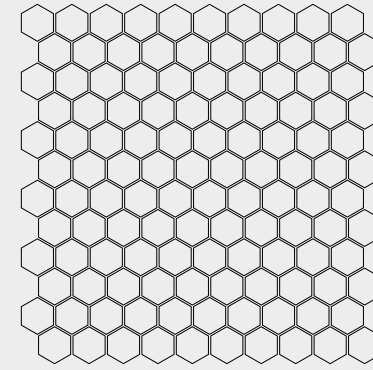


1/2" x 3/4" Staggered
KSSM75

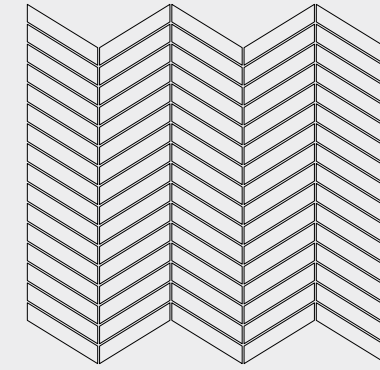


2.5cm x 10cm Herringbone
KSMOH1

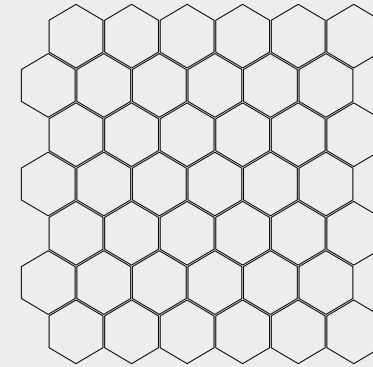
KEYSTONE MOSAICS



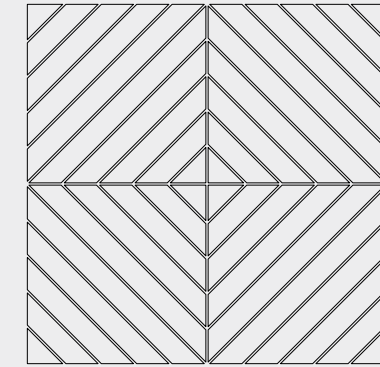
2.5cm Hexagon
KSMOH2



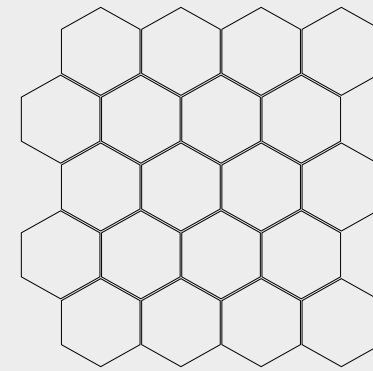
Chevron
KSMOC1



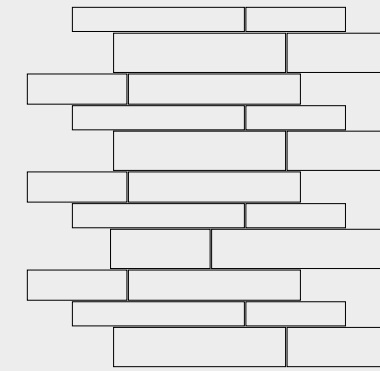
2" Hexagon
KSMOX2



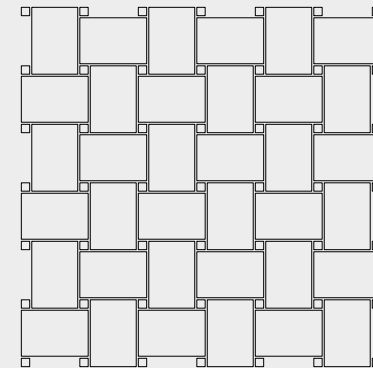
Diamond
KSMOD1



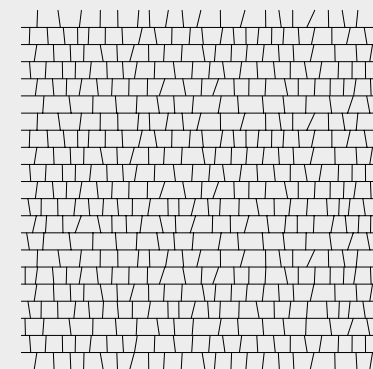
3" Hexagon
KSMOH8



Random Stripe
KSMORD



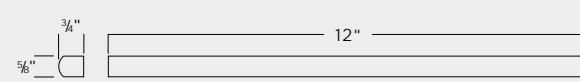
3cm x 5cm Basketweave
KSMOB3



1.5cm Handclipped
KSSMHC

KEYSTONE MOLDINGS

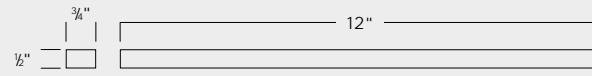
The necessary finishing touches of surface applications are available in select stones. From bases to liners and rails, moldings add an architectural element to walls and floors.



Pencil Liner 1/8" x 12"
KSLN01



Square Pencil Liner 3/4" x 12"
KSLN03



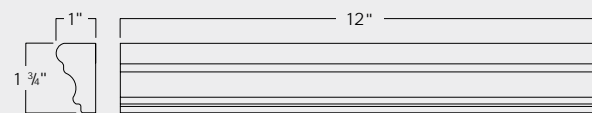
Empire Rail 1/2" x 12"
KSRL06



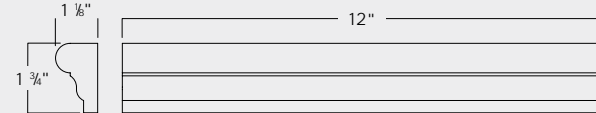
Empire Rail 5/8" x 12"
KSRL06



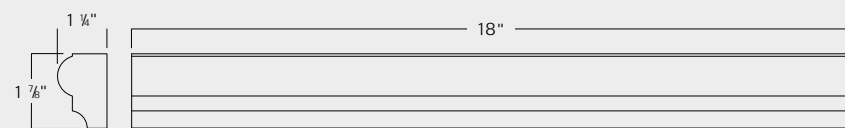
Empire Rail 3/4" x 12", 3/4" x 16", 3/4" x 20"
KSRL06



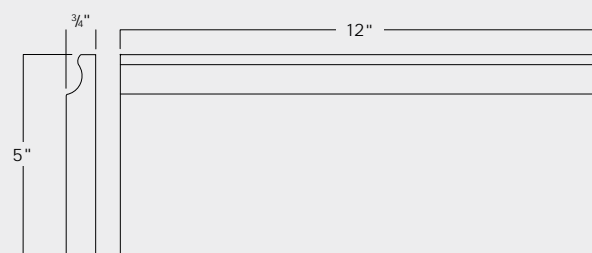
A Rail 1 3/4" x 12"
KSRL01



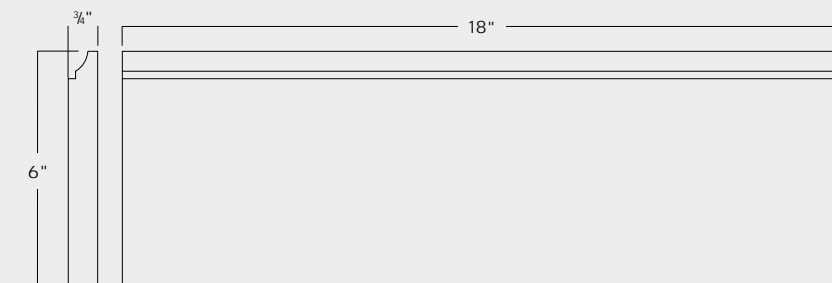
B Rail 1 3/4" x 12"
KSRL24



Stowe Rail 1 3/8" x 18"
KSRLS1



Standard Base 5" x 12"
KSBS01



Stowe Base 6" x 18"
KSBSS1

TERMINOLOGY

STONE

LIMESTONE

Limestone is the result of millions of years of seashells and bones of sea creatures settling on the ocean floor and is called a sedimentary stone. The sediment combined with the carbon dioxide in the water to form calcium carbonate—the basic mineral component of all limestone and marble. From there, pressure on the sediment created limestone. If you examine some limestone closely, you can see that it is almost entirely composed of small shells and bones. Limestone is a hard material and suited for all interior residential applications. It must be sealed.

MARBLE

Marble is limestone that has been subjected to heat and “crystallized.” In a polished finish, the surface activity is highlighted. Like limestone, it is appropriate for interior residential applications.

QUARTZITE

Quartzite began as sandstone but experienced significantly more heat and pressure—so much so that different materials in the stone fused together. Pure quartzite is usually white or light grey, with other colors coming from the presence of impurities in the stone’s chemical structure. Quartzite is a hard stone, making it very resistant to chemical weathering.

TRAVERTINE

Travertine is also created from sediment but had water bubbling through it as it formed. This percolating of water generates small holes in travertine’s structure. These holes can be filled with cement during the fabricating process, if desired. Travertine stones are hard and durable, so they are appropriate for interior and exterior applications (in warm climates), both residential and commercial.

SURFACE TEXTURE & FINISH

ANTIQUED (A)

Lightly distressed texture—either bush-hammered, sandblasted and/or gently brushed—with chiseled or straight edges.

BAMBOO (B)

A bamboo-like texture created by putting honed tiles under special cutting wheels that scratch their surface. Tiles can be cut into diamond-shaped decorative “domino” field tile.

BRUSHED ANTIQUE (BA)

A weathered, rustic finish devised by acid-washing stone and then texturing it with mechanical brushes, using light pressure and water to minimize friction and heat.

BRUSHED & FLAMED (BF)

Smooth, nonslip surface, achieved by softening the rough finish of flamed stone with a stiff spinning brush.

COMBED (C)

A linear etched/lined finish that is slightly brushed to remove roughness.

FLAMED (F)

Nonslip rough finish created by heating stone to 3,000 °F with an acetylene torch to burst its crystalline structure.

FABRIC FINISH (FF)

A decorative machined finish with a particular design. This finish is nonslip and slightly brushed to eliminate roughness.

GLYPHIC (G)

A marble surface with an engraved, groove-like effect, handcrafted through a process that is similar to cutting wood.

HAND-HONED (HH)

Subtly undulated, hand-finished surface. Corners and distressed edges are slightly pillowed and broken, enhancing the old-world patina.

HONED (H)

Smooth but nonreflective surface.

POLISHED (P)

A reflective surface, intensified in color by the abrasives used in the polishing technique.

RESTORED (R)

Subtly undulated, hand-finished surface with chiseled or straight edges.

TUMBLED (T)

A worn, smooth finish with rounded edges, achieved by placing stone in a cylinder and tumbling with small rocks and water.

FLAMED & TUMBLED (FT)

A rustic texture achieved by applying a torch to stone, cutting it into small squares, and then tumbling the pieces in a vat of porcelain pebbles to smooth away roughness.



ASH ANTIQUED

CARLOTTA BRUSHED ANTIQUE

BISCUIT RESTORED

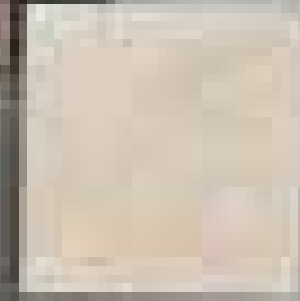
CREMA D'ORCIA

MONTEREY

RAVEN

AMARO

SILVER QUARTZITE



ARROWROOT

DAKOTA ANTIQUED



IMPERIAL DANBY

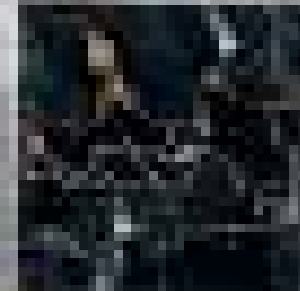
VULCAN

PORTORO GOLD



VANILLA CREAM

ZEPHYR



PRUNELLA RESTORED

CARRARA

PLUMERIA

THASSOS SELECT

AURORA

CARRARA ANTIQUED



VERIDIAN

STATUARY

SILK GEORGETTE

SULTANA

PIEDMONT

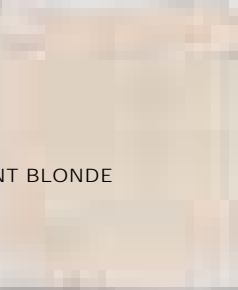
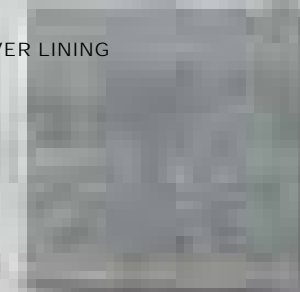
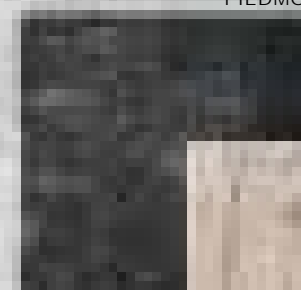
SILVER LINING

PALISSANDRO

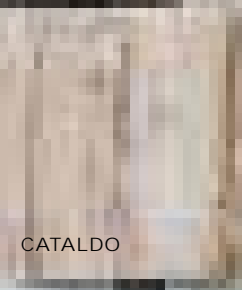
ARAN GRAY

BARDIGLIO DARK

PETRONELLI



BAJA



WHITE ONYX



NERO MARQUINA

PIEDMONT BLONDE

SILVER CLOUD

CATALDO

CIELO

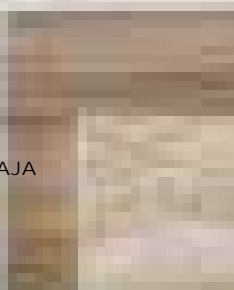
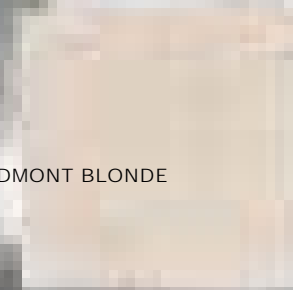
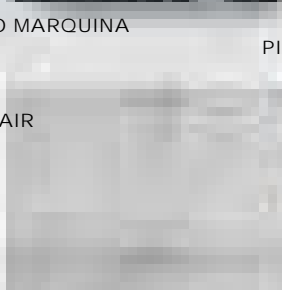
KIRBY ANTIQUED

ADAIR

BASALT

CALACATTA

DOMITILLA

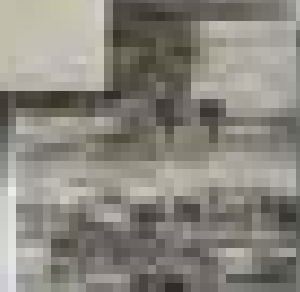
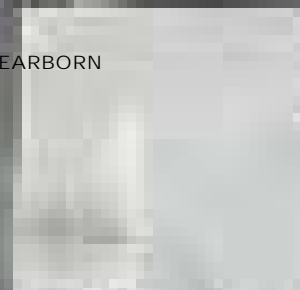
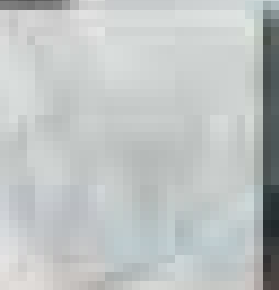
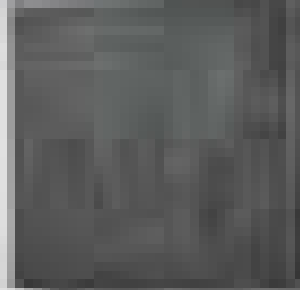
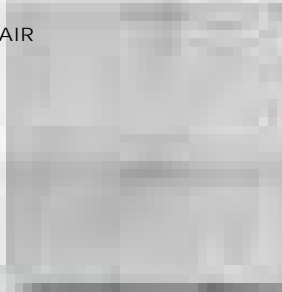


VENATO

SAVOY

DEARBORN

CARLOTTA



REDWOOD

CIRRUS

AGATHA

ALPACA

THUNDER CLOUD DISCONTINUED

THE KEYSTONE COLOR PALETTE

SECTION 03

FIXTURES

WASHSTANDS | SINKS | BATHTUBS

Fixtures are the essential building blocks of a classical bath. Each of our proprietary designs combines aesthetic refinement, unrivaled craftsmanship and incomparable performance. Charged with a sense of history and style, they mix effortlessly to create a space that's distinctly your own.



Pelham Metal Four Leg Single Washstand in Nickel with 1 1/2" Built Up Stepped Edge Carrara Honed Slab and Backsplash, Aero Faucet with Cross Handles in Nickel, Keystone Field Tile 12" x 24" in Aran Gray Honed

WASHSTANDS & SINKS



Alden
Metal Round Two Leg Single Washstand for Sink without Backsplash 5 1/6" x 20 3/8" x 29 1/2"
ALWS01



Alden
Metal Round Two Leg Single Washstand for Sink with Backsplash 5 1/6" x 18 7/8" x 29 1/2"
ALWS02



Boulevard
Glass Round Two Leg Single Washstand 2 1/8" x 2 1/8" x 34 1/8"
BDWS01



Crystal
Metal Round Two Leg Single Washstand 27 1/8" x 19 13/16" x 32 3/4"
CRWS43

Metal Round Two Leg Single Washstand Packaged with Sink & Slab Top 30" x 21" x 34"
CRWS02



Etoile
Metal Round Two Leg Single Washstand 39 1/2" x 23 7/8" x 34"
ETWS47



Fielding
Metal & Wood Four Leg Single Washstand 40 1/2" x 22 7/8" x 32 13/16"
100520

Metal & Wood Four Leg Single Washstand Packaged with Sink & Slab 42" x 23 3/4" x 38"
FDWS01



Fielding
Metal & Wood Four Leg Double Washstand 64 1/2" x 22 7/8" x 32 13/16"
FDWS02



Lucerne
Metal Two Leg Single Washstand 36 1/8" x 22 1/8" x 29 3/8"
100518



Opus
Metal Round Single Two Leg Washstand 2 1/2" x 2 1/2" x 32 1/4"
OPWS02



Palladio
Metal Round Two Leg Single Washstand Only 26" x 18 1/2" x 30 1/2"
PAWS47



Pelham
Metal Four Leg Single Washstand 36 3/8" x 22 3/8" x 32 3/8"
100519

Metal Four Leg Single Washstand Packaged with Sink & Slab 39" x 24" x 38"
PEWS01



Pratt
Metal Four Leg Single Washstand 28" x 20" x 32"
PRWS01



Pratt
Metal Five Leg Double Washstand 56 1/8" x 20" x 32"
PRWS02



Universal
Metal Round Four Leg Single Washstand 28" x 20" x 31 1/2"
UNWS28

Metal Round Four Leg Single Washstand Packaged with Sink & Slab Top 30" x 21" x 32 3/4"
UNWS04

WASHSTANDS & SINKS



Universal
Metal Round Two Leg Single Washstand 28" x 19 15/16" x 31 1/2"
UNWS22



Metal Round Two Leg Single Washstand Package with Sink and Slab Top 30" x 21" x 32 3/4"
UNWS02

Universal
Metal Round Three Leg Double Washstand 56" x 19 1/2" x 31 1/2"
UNWS33



Belle Epoque
Two Leg Single Console 35 7/8" x 22 3/8" x 33 3/8"
BECL36

Two Leg Single Console 42 3/8" x 22 3/8" x 33 3/8"
BECL42



Palladio
Vitreous China Pedestal Lavatory Sink 22 7/8" x 18 3/8" x 36 3/8"
PAPLO2



Palladio
Vitreous China Pedestal Lavatory Sink 28 3/8" x 21 3/8" x 38 1/8"
PAPLO6



Hancock
Round Vessel Vitreous China Lavatory Sink 15 1/4" x 15 1/4" x 6 13/16"
HALV01



Manchester
Drop In Round Vitreous China Lavatory Sink 13 1/4" x 13 1/4" x 8 3/4"
MRLVCO

Drop In Oval Vitreous China Lavatory Sink 19 1/4" x 15 1/2" x 8 1/4"
MRLVCO



Manchester
Undermount Oval Vitreous China Lavatory Sink 17 1/4" x 14 1/2" x 8"
MRLVHU

Undermount Round Vitreous China Lavatory Sink 16 1/4" x 16 1/4" x 7 1/2"
MRLVJU



Manchester
Undermount Rectangular Vitreous China Lavatory Sink 22 3/8" x 16 3/8" x 5 1/8"
MRLVRW



Normandy
Drop In or Undermount Round Hammered Copper Lavatory Sink 15 3/4" x 15 3/4" x 7 1/8"
NOLV75



Normandy
Drop In or Undermount Rectangular Hammered Copper Lavatory Sink 22 13/16" x 14 3/4" x 5 1/8"
NOLV52



Saxby
Drop In or Undermount Oval Single Glazed Vitreous China Lavatory Sink 17 13/16" x 15 1/8" x 7 1/8"
SALV24



Titan
Round Vessel Marble Lavatory Sink 5 3/4" x 15 3/4" x 6" with Flat Bottom
TNLV01



Universal
Drop In or Undermount Rectangular Vitreous China Lavatory Sink 22 1/4" x 16 3/8" x 7 1/2"
UNLV22



Candide Freestanding Oval Cast Iron Bathtub, Keystone Field Tile 18" x 18" in Imperial Danby Honed

BATHTUBS



Clothilde
70" x 33" x 29" Freestanding
Oval Copper Bathtub
COBT01



Candide
65" x 28" x 28" Freestanding
Oval Cast Iron Bathtub
CDBT19



Margaux
70" x 30" x 27" Freestanding
Oval Cast Iron Bathtub
MABT01



Santry
67" x 31" x 22" Freestanding
Cast Iron Oval Bathtub
SNBT67



Saxby
61" x 30" x 19" Drop In Oval
Cast Iron Bathtub without Feet
SABT27

70" x 30" x 19" Drop In Oval
Cast Iron Bathtub without Feet
SABT90



Saxby
61" x 30" x 23" Freestanding
Oval Cast Iron Bathtub with Feet
SABT61

70" x 30" x 24" Freestanding
Oval Cast Iron Bathtub with Feet
SABT70



Cambridge
71" x 32" x 21" Rectangular
Cast Iron Bathtub with End Drain
CGBT39



Chesterfield
71" x 34 7/16" x 25" Freestanding
Rectangular Bathtub with
Center Drain and Bun Feet
CFBT04



Classic
72" x 37" x 22" Right Hand Air
and Whirlpool Oval Bathtub
with Center Drain
CLAW5R



Classic
72" x 36" x 21" Right Hand
Whirlpool Rectangular Bathtub
with Center Drain
CLWP1R



71" x 33" x 20" Right Hand Air
and Whirlpool Rectangular Bathtub
with End Drain
CLAW6R



Colette
70" x 32" x 24" Freestanding
Oval Bathtub
CBBT01



Empire
71" x 34 1/2" x 24" Freestanding
Rectangular Bathtub
EMBT01



59" x 34 1/2" x 24" Freestanding
Rectangular Bathtub
EMBT10

Empire
66 1/2" x 34 1/2" x 24" Left Corner
Rectangular Bathtub with End Drain
EMBT02

66 1/2" x 34 1/2" x 24" Right Corner
Rectangular Bathtub with End Drain
EMBT03

SECTION 04

THE MUST-HAVES

LIGHTING | KNOBS, PULLS & HINGES | BARS, SHELVES & HOOKS | MIRRORS
BATH FURNITURE | COUNTERTOP ACCESSORIES | TOWELS & TEXTILES

Not just for special occasions, these functional objects are necessary elements in a well-appointed bath. Match materials and finishes to your core components, or create a layered mix that defines truly personal style.



Aurora Pendant, Canter Soap Dispenser, Cavea Soap Dish, Tabletop Mirror & Vanity Tray, Engine Turned Pewter Soap Dish, Foro Sconce, Marseille Bath Mat, Steward Knob, Stockton Knob and Pulls, Waterworks Personal Care

LIGHTING



Addair
Wall Mounted Single Sconce
with Glass Shade
ADLT01

Wall Mounted Double Sconce
with Glass Shade
ADLT02



Blue Note
Wall Mounted Single Arm Sconce
with Fabric Shade
BLLT01



Fairfax
Wall Mounted Single Arm Sconce
with Glass Shade
FALT01



Helio
Wall Mounted Single Arm Sconce
with Glass Shade
HOLT02



Arundel
Wall Mounted Single Arm Sconce
with Glass Shade
AULT01



Compass
Wall Mounted Single Arm Sconce
with Glass Shade
CMLT01



Foro
Wall Mounted Single Sconce
with Fluted Glass Shade
FRLT02

Wall Mounted Double Sconce
with Fluted Glass Shade
FRLT03



Marley
Wall Mounted Single Arm Sconce
with Fabric Shade
MLLT01



Arundel
Ceiling Mounted Small Pendant
with Glass Shade
AULT03



Ceiling Mounted Large Pendant
with Glass Shade
AULT04



Compass
Ceiling Mounted Small Pendant
with Glass Shade
CMLT02



Ceiling Mounted Large Pendant
with Glass Shade
CMLT03



Foro
Wall Mounted Single Arm Sconce
with Glass Shade
FRLT01



Navigator
Wall Mounted Single Arm Sconce
with Glass Shade
NALT01



Foro
Ceiling Flush Mount Small
with Glass Shade
FRLT05

Ceiling Flush Mount Large
with Glass Shade
FRLT06



Newell
Wall Mounted Single Arm Sconce
with Fabric Shade
NELT01



Aurora
Wall Mounted Single Arm Sconce
with Glass Shade
AALT02



Deska
Wall Mounted Sconce
DKLT01



Foro
Ceiling Mounted Pendant
with Glass Shade
FRLT04



Sargent
Wall Mounted Single Arm Sconce
with Glass and Porcelain Shade
SRLT01



Aurora
Ceiling Mounted Small Pendant
with Glass Shade
AALT03



Ceiling Mounted Large Pendant
with Glass Shade
AALT01



Dewey
Wall Mounted Single Arm Sconce
with Fabric Shade
DWLT01

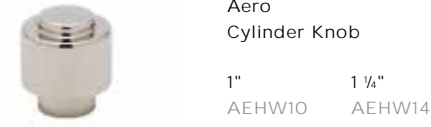


Hamilton
Wall Mounted Single Arm Sconce
with Glass Shade
HMLT01



Torrey
Ceiling Mounted Large Pendant
with Glass Shade
TOLT04

KNOBS, PULLS & HINGES



**Aero
Cylinder Knob**
1" AEHW10 1 1/4" AEHW14



**Fallbrook
Leather Knob**
1 1/8" FKHW01 1 1/2" FKHW05
1 3/4" FKHW06



**Aero
Pull**
4" AEHW04 6" AEHW06



**Aero
Post Knob**
1" AEHW01 1 1/4" AEHW02



**Foro
Fluted Knob**
1" FRHW01 1 1/4" FRHW02



**Cushing
Pull**
3" CHHW03 4" CHHW04
6" CHHW06



**Boulevard
Knob**
1 1/4" BDHW11 1 1/2" BDHW10



**Rondelle
Knob**
1 1/4" ROHW01 1 1/2" ROHW02



**Dorland
Hammered Pull**
1 3/4" DRHW01 4" DRHW02



**Camden
Knob**
1 1/4" CAHW01 1 1/2" CAHW02



**Steward
Knob**
1 1/2" SWHW03 1 3/4" SWHW04



**Dorland
Smooth Pull**
1 3/4" DRHW03 4" DRHW04



**Cushing
Knob**
7/8" CHHW01



**Stockton
Walnut Knob**
1 1/4" SKHW01



**Fallbrook
Leather Pull**
1 3/4" FKHW02



**Easton
Knob**
1" EAHW10 1 1/4" EAHW14



**Tremont
Knob**
7/8" TZHW01



**Fallbrook
Leather Pull**
4 1/4" FKHW04



**Etoile
Metal Knob**
1" ETHW10 1 1/4" ETHW15



**University
Knob**
1" UNHW11 1 1/8" UNHW12



**Foro
Pull**
4" FRHW04 6" FRHW06



**Etoile
Porcelain Knob**
1" ETHW11 1 1/4" ETHW14



**Waterworks
Martini Knob**
1" WWHW21 1 1/4" WWHW22



**Foro
Shower Pull**
8" FRHW08 12" FRHW12

KNOBS, PULLS & HINGES



**Napa
Leather Pull**
4" NPHW04 8" NPHW08
12" NPHW12



**Rockport
Leather Pull**
6" RKHW06



**Boothbay
Hinge**
3 1/2" BBHW01 6 1/2" BBHW02



**Paddock
Drop Pull**
3 3/4" PCHW01



**Stockton
Walnut Pull**
3" SKHW03



**Harpwell
Hinge**
4 1/2" HWWH01



**Paddock
Pull**
4" PCHW04 6" PCHW06



**Stockton
Walnut Pull**
6 1/4" SKHW06 12" SKHW12



**Salem
Hinge**
3" SMHW01



**Paragon
Pull**
4 1/4" PGHW04 9" PGHW09



**Stockton
Metal Pull**
3" SKHW04



**Aero
Shelf Bracket**
6" AEBK06 9" AEBK09



**Portsmouth
Pull**
4" PHHW04 6" PHHW06



**Stockton
Metal Pull**
6 1/4" SKHW07 12" SKHW13



**Redondo
Pull**
3 1/8" REHW03 4 1/8" REHW04



**Tremont
Pull**
3" TZHW03 4" TZHW04
6" TZHW06



**Riverside
Leather Pull**
4" RVHW04 12" RVHW12



**Wilshire
Leather Pull**
1 1/4" WHHW01



**Rockport
Leather Strap Pull**
1 1/4" RKHW01



**Wilshire
Leather Pull**
6" WHHW06 9" WHHW09
12" WHHW12

BARS, SHELVES & HOOKS



Aero
Single Robe Hook
AERH01



Aero
Wall Mounted Three Piece
Paper Holder
AEPH01



Aero
Double Robe Hook
AERH02



Boulevard
Wall Mounted Three Piece
Paper Holder
BDPH19



Boulevard
Single Robe Hook
BDRH28



Etoile
Wall Mounted Swing Arm
Paper Holder
ETPH37



Etoile
Single Robe Hook
ETRH19



Etoile
Wall Mounted Covered
Paper Holder
ETPH47



Etoile
Double Robe Hook
ETRH63



Foro
Wall Mounted Three Piece
Paper Holder
FRPH01



Foro
Single Robe Hook
FRRH01

BARS, SHELVES & HOOKS



Aero
Wall Mounted Towel Ring
AETB04



Boulevard
Single Tier Shelf
BDSF24



Foro
6" Wall Mounted Towel Ring
FRTB01



Etoile
Etoile 25 7/8" Metal Hotel Rack
ETHR01



Aero
24" Single Metal Towel Bar
AETB24



Etoile
Single Tier Shelf
ETSF24



Boulevard
24" Single Metal Towel Bar
BDTB01



Etoile
Wall Mounted Rectangular
Shower Caddy
ETSC01



Boulevard
24" Single Crystal Towel Bar
BDTB03



Etoile
28" Freestanding Metal Towel Rack
ETTB93



Etoile
24" Single Glass Towel Bar
ETTB01



Foro
24" Single Metal Towel Bar
FRTB24

MIRRORS & BATH FURNITURE



Aero Knob, Asscher Soap Dish, Boulevard Knob, Crystal Mirror, Foro Flush Mount, Marseille Hand Towel & Wash Towel, Paddock Pull, Pierre Soap Dish, Soap Dispenser & Tray, Rondelle Knob, Steward Knob



Crystal Metal Oval Wall Mounted Tilting Mirror 25 7/8" x 29 15/16" x 2 3/4" CRMR43



Opus Metal Rectangular Wall Mounted Stationary Mirror 25" x 32 1/2" x 1 1/2" OPMR32



Crystal Metal Rectangular Wall Mounted Tilting Mirror 25 7/8" x 29 15/16" x 2 3/4" CRMR48



Crystal Freestanding Small 7 1/4" Diameter Magnifying Mirror CRMR30



Freestanding Large 7 1/4" Diameter Magnifying Mirror CRMR68



Crystal Wall Mounted Oval Mirror on Bar 24" x 2 1/2" x 42 3/8" CRMR51



Crystal Wall Mounted 7 1/4" Diameter Magnifying Extension Mirror CRMR38



Crystal Wall Mounted Rectangular Mirror on Bar 19 1/2" x 2 1/2" x 48" CRMR50



Crystal Wall Mounted 6 1/4" Diameter Magnifying Extension Mirror CRMR41



Concord Wall Mounted Oval Mirror 19" x 1 1/4" x 33 1/4" COMR01



Waterworks Wall Mounted 9 3/8" Diameter Magnifying and Illuminating LED Extension Mirror WWMR14



Daphne Metal Rectangular Wall Mounted Trifold Mirror 42 3/8" x 26 3/4" x 1" DPMR01



Easton Metal / Vinyl Rectangular Stool 18" x 10" x 16 1/2" EAST04



Latchet Wall Mounted Round Mirror 23 1/2" x 1 1/2" x 37 5/8" LTMR01

Easton Etagere with Clear Glass 14" x 14" x 26" EAET06

BATH FURNISHINGS



Ambra



Asscher*



Boardman



Waterworks Essentials



Bambu



Fleuron



Canter*



Cavea



Dorset



Equus



Cella



Figura



Engine Turned Pewter*



Luster



Pierre



Estrela*



Gotham*



Marseille*

Exquisite Custom Cabinetry

Infinitely versatile and customizable, our expertly crafted cabinetry comes in a range of timeless styles, colors and finishes—all designed to bring order and artistry to your space. Personalize your selection inside and out: each of our proprietary designs creates a rare, collected look that transcends eras. You'll also enjoy access to our exceptional range of design and project management services. Our skilled experts will guide you through the process.

For more information, contact a showroom or visit waterworks.com/cabinetry.



Everything we do at Waterworks is focused on creating an outstanding experience for our clients.

DESIGN SPECIALISTS

World-class service is important to us. From inspiration to installation, our knowledgeable design consultants give you access to a rich heritage of expertise like no other.

SERVICE EXCELLENCE

Shop our selection in-store, online or by phone. Our full-service experts will confirm your order within 24 hours and review all the details to ensure that your project flows as smoothly as possible.

TECHNICAL SUPPORT

Our comprehensive support teams and materials offer professional designers and contractors the precise tools they need to specify, install and service our products.

Showrooms

Scottsdale, AZ
2732 North 68th Street
Suite 7
480.946.2550

Los Angeles, CA
8431 Melrose Place
310.289.5211

San Francisco, CA
155 Rhode Island Street
415.431.7160

Denver, CO
601 S. Broadway, Suite X
303.282.6800

Greenwich, CT
23 West Putnam Avenue
203.869.7766

Georgetown, DC
3314 M Street NW
202.333.7180

Miami, FL
167 NE 39th Street
305.573.7593

Atlanta, GA
1 West Paces Ferry Road NW
404.266.1080

Chicago, IL
222 Merchandise Mart Plaza
Suite 136
312.527.4668

Boston, MA
1 Design Center Place
Suite 19-120W
617.951.2496

New York, NY
7 East 20th Street
212.254.6025

New York, NY
215 East 58th Street
212.371.9266

New York, NY – Kitchen
979 3rd Avenue, Suite 134
Entrance on 59th Street
212.371.9266

Dallas, TX
1525 Hi Line Drive, Suite A
214.749.0465

International Showrooms

Bangkok, Thailand
Opening Fall 2019
906 Sukhumvit 55 (Thonglor)
+6662.878.0707

London, UK
579-581 King's Road
SW6 2EH
+44 (0)207.384.4000

Outside Sales Consultants

Southampton, NY
Janet Calabrese
631.566.0980

Philadelphia, PA
Rick Mead
215.756.4205

Hospitality & Multi-Unit Residential

Los Angeles, CA
Southern California
& Hawaii Region
310.492.7045

San Francisco, CA
Northern California Region
415.431.7160 ext 6651

Washington, DC
DC, Mid-Atlantic & South
202.333.7180

West Palm Beach, FL
Southeast &
Caribbean Region
561.373.3933

New York, NY
New York Metro
& Northeast Region
212.254.0231 ext. 1

London, UK
UK & International Region
+44 (0)207.384.4008

All Other Inquiries
waterworks.com/commercial
203.546.6196

Partners

Birmingham, AL
Fixtures & Finishes
205.323.5616

Los Altos, CA
Cabochon North
650.209.5097

La Jolla, CA
Cabochon Tile & Stone
858.454.8798

Jacksonville, FL
Hollingsworth
904.396.3131

Jupiter, FL
Miller's Fine Hardware
561.746.4800

Tampa, FL
Hollingsworth
813.644.7202

West Palm Beach, FL
Miller's Fine Hardware
561.659.4417

Ketchum, ID
Rocky Mountain Hardware
208.726.2345

Lexington, KY
Willis Klein
859.254.1123

Louisville, KY
Willis Klein
502.244.7077

Bloomfield Hills, MI
Russell Hardware Company
248.644.0100

Minneapolis, MN
Montaggio
612.333.6264

St. Louis, MO
Immerse
314.375.1500

Charlotte, NC
Bird Decorative
Hardware & Bath
704.344.9955

International Partners

Raleigh, NC
Bird Decorative
Hardware & Bath
919.833.5580

Wilmington, NC
Bird Decorative
Hardware & Bath
910.973.6293

Bedford Heights, OH
Edelman
216.591.0150

Columbus, OH
Carr Supply
614.252.7883

Westlake, OH
Edelman
440.808.0315

Oklahoma City, OK
Motif Hardware
405.408.4975

Portland, OR
Chown Hardware
800.452.7634

Charleston, SC
Bird Decorative
Hardware & Bath
843.577.5440

Austin, TX
Alexander Marchant
512.462.1444

Olmos Park, TX
Alexander Marchant
210.320.2093

Salt Lake City, UT
Mountain Land Design
801.466.0990

Bellevue, WA
Chown Hardware
800.574.4312

Jackson, WY
Rocky Mountain Hardware
307.732.0078

Calgary, AB
Empire Kitchen & Bath
403.214.1624

Vancouver, BC
Cantu Bathrooms
& Hardware Ltd.
604.688.1252

Toronto, ON
Gingers
416.787.1787

Los Cabos, BCS, MX
Piacere
+52 (624)172.6510

Mexico City, MX
Piacere
+52 (55)5202.1408

Germany
Material + Konzept
Oettingenstrasse 30
80538 Munchen
+49 89 2323 9886 - 0

France
Outside Sales Consultant
L & D Conseil pour Waterworks
+ 33 6 78 36 69 69

Catalog

Direct Sales
800.899.6757

Waterworks is a registered trademark of Waterworks IP Company, LLC. While Waterworks uses reasonable efforts to include accurate and up-to-date information and photographs in the catalog and on the website, Waterworks makes no warranties or representations as to the accuracy of this information and these photographs. Waterworks assumes no liability or responsibility for any errors or omissions in the content or photographs in the catalog or on the website.

