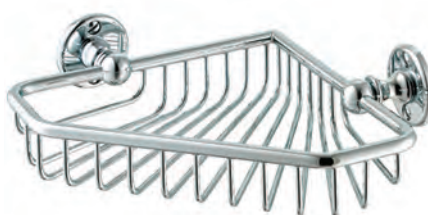




Handmade
in the heart of
BRITAIN



THE STERLINGHAM^{CO.}_{LTD.}

finest quality CLASSIC BATHROOM FITTINGS



contents...

INTRODUCTION	4
TRADITIONAL MANUFACTURING	5
BESPOKE DESIGN	6
CLASSIC	
ACCESSORIES	
PAPER HOLDERS	8-9
SOAP & TUMBLER HOLDERS	10
SHELVES & BATH STANDS	11-12
BASKETS	13-14
BATHRACKS	15-16
TOILET BRUSHES	17-18
TOWEL RINGS & BARS	19-20
TOWEL HOOKS	21
SHOWER RISER RAILS	23
SHOWER CURTAIN RAILS	24-26
MIRRORS	27-30
FINISH OPTIONS	32
THE STERLINGHAM PROMISE	33
GENERAL INFORMATION	33
WARRANTY	34
ENVIRONMENTAL COMMITMENT	34



THE
STERLINGHAM
COMPANY LIMITED



“Though a man may live in the heart of the forest if he makes the finest chairs the world will beat a path to his door.”

More than thirty years have passed since I first read these words, carved on a piece of wood in the window of a small independent furniture retailer.

Although I may not have recounted them verbatim their spirit has been my standard. The Sterlingham Company Ltd was founded on the principles of quality, service and excellence in design. Our name reflects the reliability and dependability of the Pound Sterling and the historic ingenuity of the industrial revolution pervading the small towns around the city of Birmingham.

This catalogue along with those for our other hand made bath products reflects the reliability and dependability of our skills and our determination to provide you with the finest that the woodsman and his forest can provide.

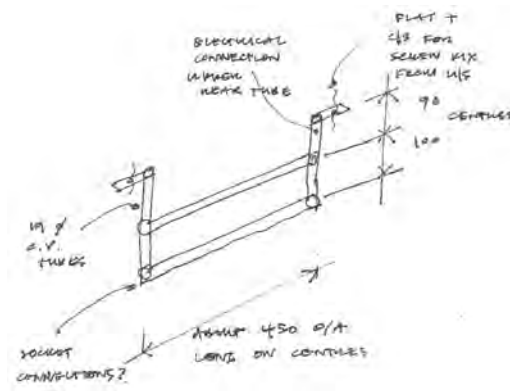
Kelvin Pearce

FOUNDER



TRADITIONAL MANUFACTURING

Quality cannot be inspected in. From the materials sourced to the final finishing and assembly The Sterlingham builds in quality at every stage. Thus our reputation has been built over three decades, the hallmarks of quality are hot-stamped through our components and ethic. Hand soldered, lathe turned, hand sawn - the tubes and sections from hot mills are worked, hand polished, hand finished and hand assembled, scrutinized under magnifying lamps before and after electroplating.



BESPOKE DESIGN *a perfect fit*

Within this brochure you will, we hope, find a product that matches your aspirations. But we realise that it can also be a launchpad, firing the imagination for personal designs and configurations. This is where our willingness to work with you or the designer comes into play to create your ideal bespoke bathroom fitting.



CASE STUDY...

Commissioned by Maddux Creative, this project for an 1840's residential property in London is the perfect example of client, designer and manufacturer working in partnership to create a truly unique result. We manufactured a beautifully crafted six leg washstand, two bespoke pole mounted mirrors and a double glass towel rail. The resulting success of this project saw it featured on the cover of *World of Interiors* magazine.

Photography Ricardo Labougle.
Image courtesy of World Of Interiors.



— CLASSIC —
ACCESSORIES

PAPER HOLDER



MODEL	HEIGHT	WIDTH	DEPTH
1-100	44	190	75



L-SHAPED PAPER HOLDER

MODEL	HEIGHT	WIDTH	DEPTH
1-103	190	44	85

CONCEALED *fittings*

All of our classic accessories range are available with concealed fittings to leave a clean uncompromised design.



HINGED PAPER HOLDER



MODEL	HEIGHT	WIDTH	DEPTH
1-109	195	92	44

FREESTANDING PAPER HOLDER



MODEL	HEIGHT	WIDTH	DEPTH
1-105	775	200	200

TUMBLER & HOLDER



MODEL	HEIGHT	WIDTH	DEPTH
1-102	99	99	124

SOAP DISH & HOLDER



MODEL	HEIGHT	WIDTH	DEPTH
1-101	44	147	161

TRADITIONAL MANUFACTURING • BY 21ST CENTURY CRAFTSMEN

SHELF & HINGED GUARD RAIL



MODEL	HEIGHT	WIDTH	DEPTH
1-024	65	610	159

Available bespoke

THREE TIER SHELF



MODEL	HEIGHT	WIDTH	DEPTH
1-030	505	515	148

Available bespoke



OPTIONAL *finishes*

*We are able to supply glass in various shades.
Please contact us or visit our website for
more details.*

BATHROOM STAND



MODEL	HEIGHT	WIDTH	DEPTH
1-038	830	350	350
1-039	830	500	350

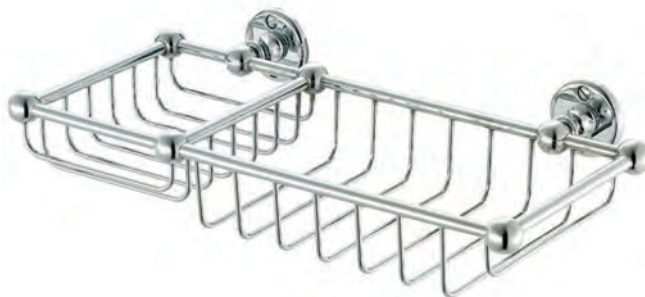
Available bespoke

SOAP OR SPONGE BASKET



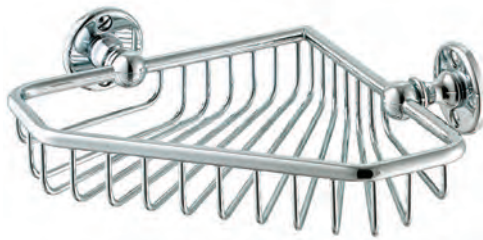
MODEL	HEIGHT	WIDTH	DEPTH
1-050	60	160	142

SOAP AND SPONGE BASKET



MODEL	HEIGHT	WIDTH	DEPTH
1-060	66	320	170

CORNER BASKET



MODEL	HEIGHT	WIDTH	DEPTH
1-066	55	229	164

3 TIER CORNER BASKET



MODEL	HEIGHT	WIDTH	DEPTH
1-035	652	230	250

Adjustable Spacing. Available Bespoke.

BATHRACK



MODEL	HEIGHT	WIDTH	DEPTH
3-214	95	830-910	200

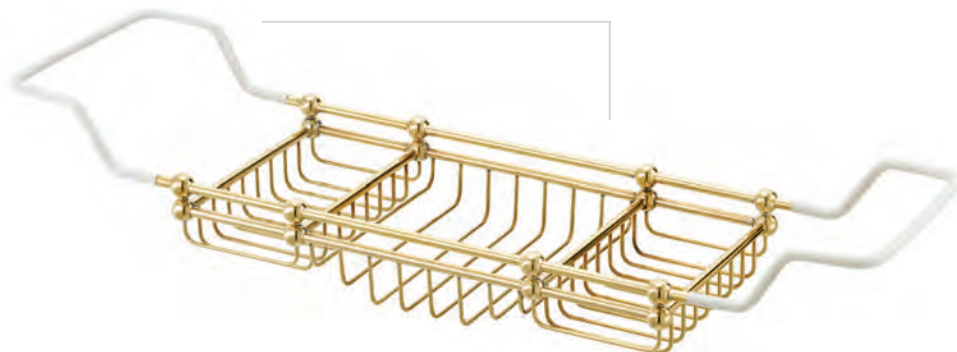
BATHRACK
WITH MIRROR



MODEL	HEIGHT	WIDTH	DEPTH
3-235	255	830-910	200

FINE QUALITY &
CRAFTSMANSHIP

DELUXE BATHRACK



MODEL	HEIGHT	WIDTH	DEPTH
3-210	115	700-800	197

DELUXE BATHRACK WITH MIRROR



BOOKSTAND

MODEL	HEIGHT	WIDTH	DEPTH
3-250	200	230	50



MODEL	HEIGHT	WIDTH	DEPTH
3-230	275	700-800	197

WALL MOUNTED
TOILET BRUSH

MODEL	HEIGHT	WIDTH	DEPTH
1-310	398	105	152



FREESTANDING PAPER HOLDER & BRUSH

MODEL	HEIGHT	WIDTH	DEPTH
1-315	760	200	200



FREESTANDING TOILET BRUSH

MODEL	HEIGHT	WIDTH	DEPTH
1-320	445	120	135



TOWEL RING



MODEL	HEIGHT	WIDTH	DEPTH
4-310	195	190	75

SINGLE TOWEL BAR



MODEL	HEIGHT	WIDTH	DEPTH
<i>Brass Rail</i>			
4-350-18	44	457	75
4-350-23	44	584	75
4-350-29	44	737	75
<i>Glass Rail</i>			
4-355-18	44	457	75
4-355-29	44	584	75
4-355-29	44	737	75

DOUBLE TOWEL BAR



MODEL	HEIGHT	WIDTH	DEPTH
<i>Brass Rail</i>			
5-370-18	145	457	133
5-370-23	145	584	133
5-370-29	145	737	133
<i>Glass Rail</i>			
5-375-18	145	457	133
5-375-23	145	584	133
5-375-29	145	737	133

DOUBLE TOWEL RAIL CRESCENT



MODEL	HEIGHT	WIDTH	DEPTH
<i>Brass Rail</i>			
5-400-18	150	457	160
5-400-23	150	584	160
5-400-29	150	737	160
<i>Glass Rail</i>			
5-405-18	150	457	160
5-405-23	150	584	160
5-405-29	150	737	160

TOWEL HOOK



MODEL	HEIGHT	WIDTH	DEPTH
4-340	74	44	50

DOUBLE COAT HOOK



MODEL	HEIGHT	WIDTH	DEPTH
4-345	110	44	90

DOUBLE ROBE HOOK



MODEL	HEIGHT	WIDTH	DEPTH
4-330	44	60	75



SHOWER RISER RAIL



MODEL	HEIGHT	WIDTH	DEPTH
4-380	755	160	85

SHOWER RISER RAIL
WITH BASKET



MODEL	HEIGHT	WIDTH	DEPTH
4-390	755	160	200

Rail accepts 22mm shower heads

OVAL SHOWER CURTAIN RAIL



MODEL	HEIGHT	WIDTH	DEPTH
4-410	350	1500	750



RECTANGLE SHOWER CURTAIN RAIL

MODEL	HEIGHT	WIDTH	DEPTH
4-450	350	1500	750



CORNER SHOWER CURTAIN RAIL WITH CEILING STAY



MODEL	HEIGHT	WIDTH	DEPTH
4-440	350	950	650

made TO MEASURE

Tailor made to your requirements you are not limited to the standard models and sizes within this brochure. Our design team can produce a 3D drawing based on your bespoke requirements prior to your order.



CORNER SHOWER
CURTAIN RAIL



MODEL	HEIGHT	WIDTH	DEPTH
4-460	82	950	650

STRAIGHT SHOWER
CURTAIN RAIL



MODEL	HEIGHT	WIDTH	DEPTH
4-400	82	1800	82



FIXED MIRROR

MODEL	HEIGHT	WIDTH	DEPTH
2-400	600	400	20
2-600	800	600	20
2-750	900	750	20

Can be mounted horizontally or vertically

SQUARE TILT MIRROR



MODEL	HEIGHT	WIDTH	DEPTH
2-110	508	610 (508)	70

RECTANGULAR TILT MIRROR

MODEL	HEIGHT	WIDTH	DEPTH
2-112	762	712 (610)	70

*All of our square and rectangular mirrors
are available in bespoke sizes.*



ROUND TILT MIRROR



MODEL	HEIGHT	WIDTH	DEPTH
2-111	520	620 (520)	70

*All of our wall mounted mirrors are
available with demisting pads.*

OVAL TILT MIRROR

MODEL	HEIGHT	WIDTH	DEPTH
2-116	762	712 (610)	70



EXTENDING
SHAVING MIRROR



MODEL	HEIGHT	WIDTH	DEPTH
2-130	385-440	200	180-414

PIVOTING
SHAVING MIRROR



MODEL	HEIGHT	WIDTH	DEPTH
2-155	200	180	239

TALL FREESTANDING TABLE MIRROR



MODEL	HEIGHT	WIDTH	DEPTH
2-140	415 (475)	218	218

FREESTANDING TABLE MIRROR



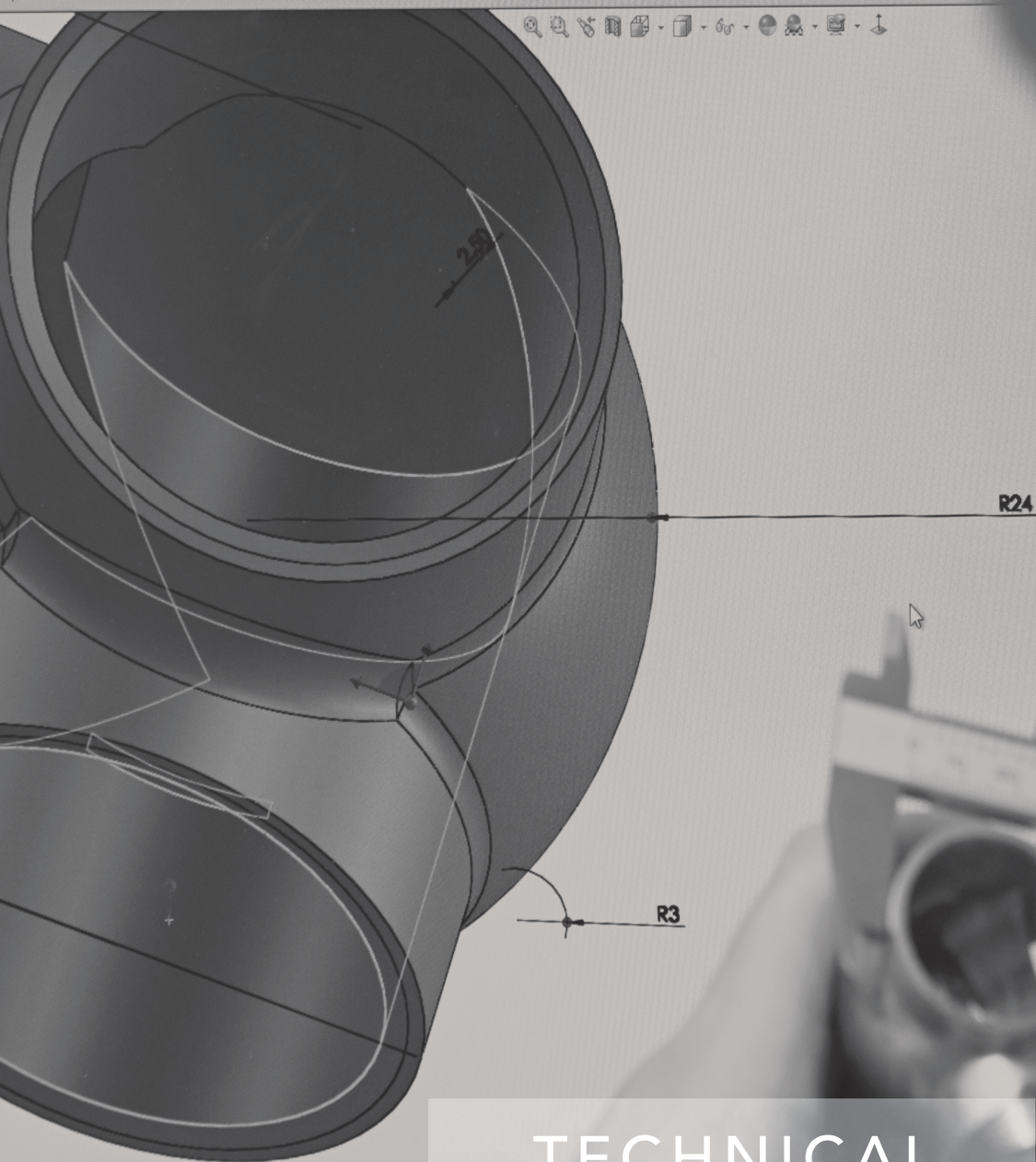
MODEL	HEIGHT	WIDTH	DEPTH
2-145	272	218	218

*All shaving and table mirrors feature standard magnification
to one side and 3 x magnification to the other.*

tranet V4.1 32mm 3 Way Elbow

Deviation Analysis Draft Analysis
Zebra Stripes Undercut Analysis
Curvature Parting Line Analysis
SimulationXpress Analysis Wizard
FloXpress Analysis Wizard
DFMXpress Analysis Wizard
DriveWorksXpress Wizard
SustainabilityXpress
Part Reviewer

32mm 3 Way Elbow



TECHNICAL
specifications

delete the feature.

9-300

SolidWorks 2014 x64 ...

P3 Pres

Editing Part

Desktop 33

FINISH*options*



POLISHED BRASS



CHROME



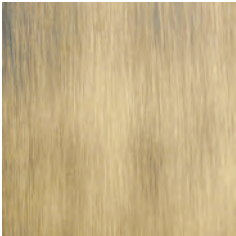
NICKEL



BRUSHED NICKEL



LIGHT BRONZE



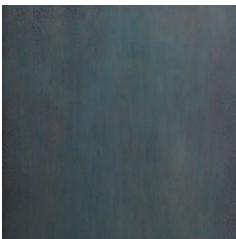
LIGHT ANTIQUE
BRONZE



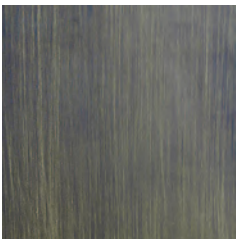
MEDIUM BRONZE



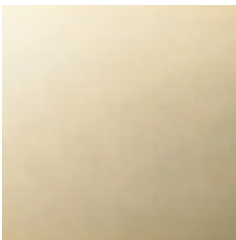
MEDIUM ANTIQUE
BRONZE



DARK BRONZE



DARK ANTIQUE
BRONZE



GOLD



MELANGE

BESPOKE FINISHES

Our standard finishes are shown here but if you require another finish, please let us know so that we can produce a sample for you to view and sign off.

THE STERLINGHAM CO. LTD.

promise..

Your order will be attended to promptly, we will request any missing information and we will acknowledge your order within 24 working hours of having all the information whereupon we will commence work on your order. We will provide a drawing where required, supplied under the terms of the General Information section. We will endeavour to keep you informed of order progress, its readiness and availability for shipment or collection. We will apply ourselves diligently to making your requirements to the highest quality in terms of size, design and finish and within the target timeframe. We will attend promptly to any queries or complaint. We ask you to check your order acknowledgement carefully and also to let us know within five working days of arrival of the goods any damage or shortage (after which time we cannot entertain claims) and we will attend promptly to any errors.

GENERAL INFORMATION

1. General

- i. All measurements are nominal with a finished products tolerance of $\pm 3\text{mm}$.
- ii. Heights and widths shown in this brochure or price list are overall sizes including mounting flanges.
- iii. Technical drawings are available on request for all of our standard products.
- iv. For bespoke requests please allow 7 days for drawings. All drawings are the intellectual property of The Sterlingham Co Ltd and may not be used to solicit quotations from elsewhere.
- v. For general care and cleaning guidelines please contact us. Sterlingham Towel Warmers must be installed by a qualified electrician/plumber as appropriate. Damage to the product caused by the installer is not covered by our guarantee.
- vi. The finishes shown in this brochure are as accurate as reprographic limitations will allow. If you would like to receive a sample of a finish prior to ordering please contact us.
- vii. We reserve the right to make a charge where orders for bespoke towel warmers are cancelled or altered after work on them has commenced and to charge for the preparation of drawings for such cancelled orders.

2. Electric Only Towel Warmers

- i. Electric Cable Element is rated IP67 – for detailed information on this please review IEC 529:1989, BSEN 65029:1992, or speak to your installer for more details.
- ii. Our towel warmers are available as 230v, 110v, 12v & 24v. Please contact us if you have an alternative requirement.
- iii. The supply cable for our electric only towel warmers comes from the rear centre of a wall or floor fixing flange. Which flange and the length of cable is specified by you. In the absence of your instructions otherwise, the default is top left and 1 metre of cable.
- iv. Our Low-energy heating elements are double insulated to satisfy Class II requirements. Class I requirements are met with the addition of a primary and secondary earth.
- v. Numerous tests are conducted so that no Low-energy towel warmer leaves our workshop in less than perfect condition. The heating elements are tested underwater to ensure waterproofing. Not that they are ever likely to come into contact with water being housed in the dry environment of the towel warmer. This means that they can be installed close to sources of water jets or sprays.

3. Hydronic & Dual Fuel Towel Warmers

- i. All dual fuel and hydronic models are pressure tested before polishing, after polishing and after plating to 145 p.s.i (10 bar) to ensure there are no leaks.
- ii. Dual fuel and hydronic towel warmers require additional items to be purchased. We recommend high quality valves such as those from Barber Wilsons & Co.Ltd . These can be sourced direct or through an alternative supplier or we can order them for you.
- iii. In the case of dual fuel models the electric probe element is also a chargeable extra.
- iv. As we do not manufacture the dual fuel electrical elements nor the valves required for water/dual fuel warmers we cannot offer quality guarantees on those items other than as stated within the warranty section.
- v. Checks should be made with your local water authority to ensure that the water quality will not cause dezincification of the brass material.
- vi. Such towel warmers should not be fitted to a system which uses a water softener. The installer must ensure that the product selected is suitable for the conditions and the water quality.
- vii. A manual bleed air vent is fitted to all hydronic and dual fuel models.

THE STERLINGHAM CO. LTD. *warranty*



Low-energy Towel Warmers are covered by the following 10 year guarantee:

Given satisfactory evidence of the date of purchase, we will, during the first ten years, replace or rectify any mechanical fault to the product as a whole without charge. After this time any fault developing in the electric towel warmers heating element will be rectified by replacing it at our works at the nominal cost to the customer of labour and materials. In this instance no attempt must have been made to dismantle the product because of the potential damage to the element rendering it un-testable. In both instances it is the responsibility of the customer to arrange and cover the costs of safe packaging and transportation to and from our workshop.



Hydronic and Dual Fuel Towel Warmers Are guaranteed for five years from the date of supply. As we do not ourselves make the electric heaters for Dual Fuel models, in line with the element manufacturer's warranty we will provide a replacement cartridge heater free of charge if the heater fails within one year of the date of supply.



Bath Fittings (including washstands): Our workmanship and quality inspection enables us to offer a lifetime guarantee in the hands of the purchaser.

All Products: We will not entertain any liability claims for damages to surface finishes resulting from the use of proprietary cleaning materials, normal wear and tear, and any damage caused as a result of misuse, negligence or faulty installation or where a product has been used for purposes other than its intended and normal use.

THE ENVIRONMENT OUR COMMITMENT

“Buy well, buy once”.

We are confident that the products we manufacture will serve you for many years to come minimising your outlay, and running costs too in the case of our Low-energy towel warmers. The power consumed is in the majority of instances less than 100 watts, the heating element being made bespoke for the particular towel warmer ensuring power is not wasted. We are always conscious of how our company and products might affect the environment and so we have invested in processes that reduce our own transport use and therefore carbon emissions, we re-use materials where possible, minimise waste and utilise recyclable packaging.



BATHROOM *fittings*

To request a copy of our other brochures
please call or visit our website.

THE STERLINGHAM CO.
LTD.

The Sterlingham Co.Ltd | Units 2 & 2A Stamford Street | Amblecote
Stourbridge | West Midlands | England | DY8 4HR

sterlingham.co.uk | +44 (0)1384 370 901